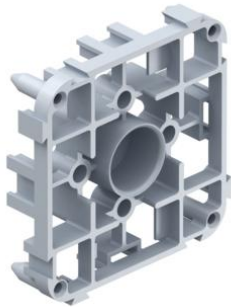


## Junction casings



### Abutment

- for support element 20 mm Ø
- can be combined with itself, with one-gang boxes, one-gang junction boxes, junction casing, universal installation housings and distance pieces 91
- attachment to formwork using expanding dowels, nails or screws

<b>Order number:</b>	<b>1210-02</b>
EAN:	4013456351202
Dispatch	250

Junction casings in all sizes and for almost any kind of installations. This product range features practical housing sizes as well as a robust housing design which is perfect for building sites.

- As central junction casings for star-shaped cable laying.
- Easy to rewire when changing the way rooms are used.
- Separator walls to separate electrical circuits.
- End cover with screw attachment for VDE-compliant installation.

