

DSC2000

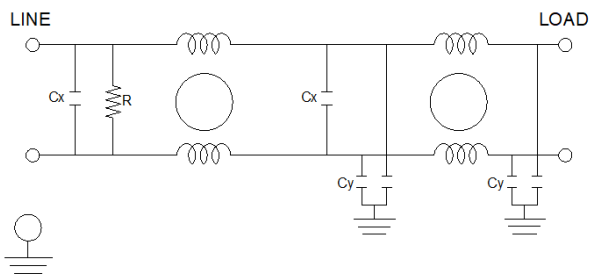
HIGH PERFORMANCE SINGLE PHASE DUAL STAGE POWER LINE FILTER

FEATURES

- » **Rated currents** include **20A**
- » Dual Stage Line Filter
- » Available with **QD** tab, **W** (wire leads) and **S** (Studs) option
- » High Performance Design
- » Agency Approved to UL1283 / 60929, CSA C22.2, EN60939
- » Y-cap value can be adjusted to fit specification

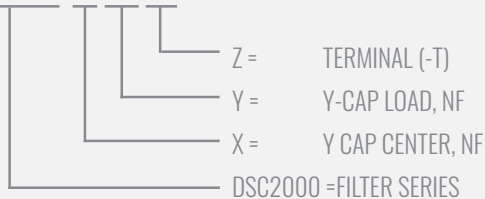


ELECTRICAL SCHEMATIC



HOW TO ORDER

DSC2000-X-Y-Z



NOTE: USE ANY COMBINATION OF -X WITH ANY -Y CAP VALUES
E.G. **DSC2000-.47-.47-QD** (0.47AMPS WITH 0.47 NF YCAP)

SPECIFICATIONS

OPERATING FREQUENCY	50/60Hz
USABLE FREQUENCY	DC - 400 Hz
MAX. OPERATING VOLTAGE	250V +10%
AMBIENT TEMPERATURE	-25 TO 40°C
CLIMATIC CATEGORY	25/100/21
TERMINALS (-T)	QD: 0.25 TABS W: WIRE LEADS S: STUDS
TYP. WEIGHT, LBS (KG)	0.8 (0.36)

LEAKAGE CURRENT

@ 250 VAC 50 Hz	0 - 3.20 mA Max.
@ 120 VAC 60 Hz	0 - 1.80 mA Max.

HIPOT RATINGS

LINE TO GROUND	2700 VDC
-----------------------	----------

TYPICAL APPLICATIONS

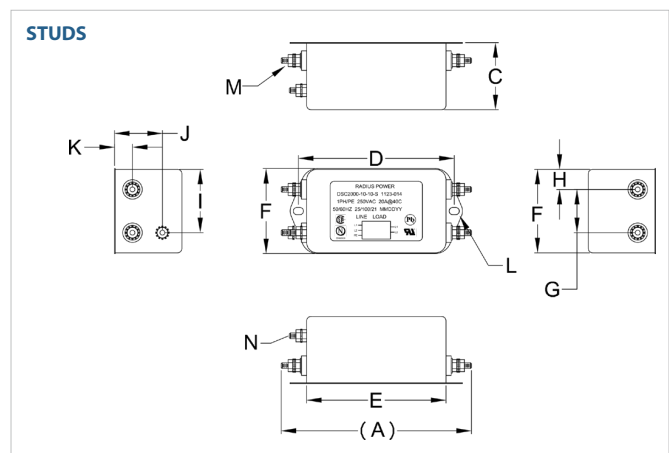
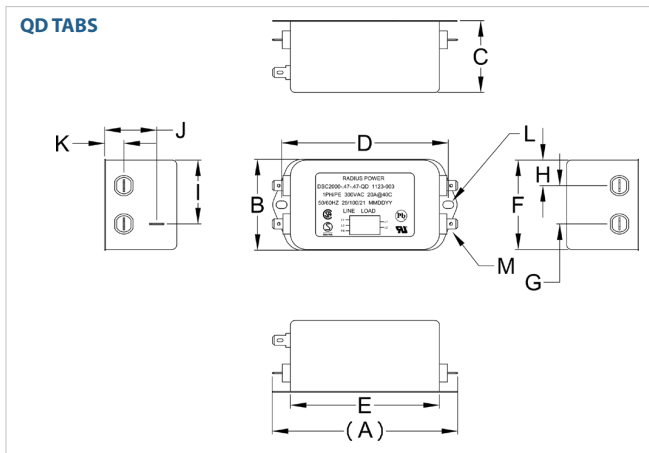
- ✓ Food Service Equipment
- ✓ Industrial and Mechanical Lighting
- ✓ Home Appliances
- ✓ Power Supplies
- ✓ Consumer Electronics

DSC2000

HIGH PERFORMANCE SINGLE PHASE DUAL STAGE POWER LINE FILTER

MODEL NO.	RATED CURRENT (A) @ 40° C	Y-CAP, nF	Z-CAP	LEAKAGE CURRENT, mA @ 250V AC, 50 Hz / @ 120V AC, 60 Hz		TERMINAL OPTIONS		MAX. DIMENSIONS" (MM)		
						(QD) INPUT/ OUTPUT	(S) INPUT/ OUTPUT	WIDTH	(LENGTH)	HEIGHT
DSC2000-0-0-QD	20	0	0	-	-	✓		2.24"(57)	4.73"(120)	1.81"(46)
DSC2000-0-0-S	20	0	0	-	-		✓	2.24"(57)	5.00"(127)	1.81"(46)
DSC2000-47-47-QD	20	0.47	0.47	0.15	0.09	✓		2.24"(57)	4.73"(120)	1.81"(46)
DSC2000-47-47-S	20	0.47	0.47	0.15	0.09		✓	2.24"(57)	5.00"(127)	1.81"(46)
DSC2000-1-1-QD	20	1	1	0.31	0.18	✓		2.24"(57)	4.73"(120)	1.81"(46)
DSC2000-1-1-S	20	1	1	0.31	0.18		✓	2.24"(57)	5.00"(127)	1.81"(46)
DSC2000-2.2-2.2-QD	20	2.2	2.2	0.69	0.40	✓		2.24"(57)	4.73"(120)	1.81"(46)
DSC2000-2.2-2.2-S	20	2.2	2.2	0.69	0.40		✓	2.24"(57)	5.00"(127)	1.81"(46)
DSC2000-4.7-4.7-QD	20	4.7	4.7	1.48	0.85	✓		2.24"(57)	4.73"(120)	1.81"(46)
DSC2000-4.7-4.7-S	20	4.7	4.7	1.48	0.85		✓	2.24"(57)	5.00"(127)	1.81"(46)
DSC2000-10-10-QD	20	10	10	3.14	1.81	✓		2.24"(57)	4.73"(120)	1.81"(46)
DSC2000-10-10-S	20	10	10	3.14	1.81		✓	2.24"(57)	5.00"(127)	1.81"(46)

DSC2000 MECHANICAL OUTLINES" (MM)



SERIES	(A)	B	C	D	E	F	G	H	I	J	K	L	M	N
QD TABS	4.56" (116)	2.24" (57)	1.81" (46)	4.09" (104)	3.66" (93)	2.24" (57)	0.94" (24)	0.63" (16)	1.57" (40)	1.28" (33)	0.47" (12)	Ø 0.25"x0.20", 2x Ø, 6.4x5.3, 2x	0.25", 5x QD, MALE, 6.35, 5x	N/A
STUDS	5.00" (127)	2.24" (57)	1.81" (46)	4.09" (104)	3.66" (93)	2.24" (57)	1.14" (29)	0.53" (14)	1.67" (43)	1.26" (32)	0.47" (12)	Ø 0.26"x0.18", 2x Ø, 6.8x4.8, 2x	STUD, M4, 4x	STUD, GND, M4

TYPICAL TOLERANCE: +/- 0.02" (0.50MM)



DSC2000

HIGH PERFORMANCE SINGLE PHASE DUAL STAGE POWER LINE FILTER

TYPICAL INSERTION LOSS, dB (50/50 Ohm)

Amps	Freq (MHz)	0.15	0.5	1.0	10	30
20	CM (dB)	42	65	70	55	50
	DM (dB)	36	60	65	70	70