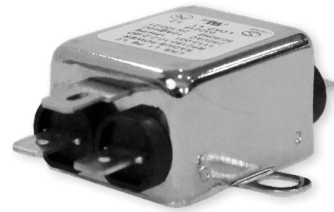


# RP2180

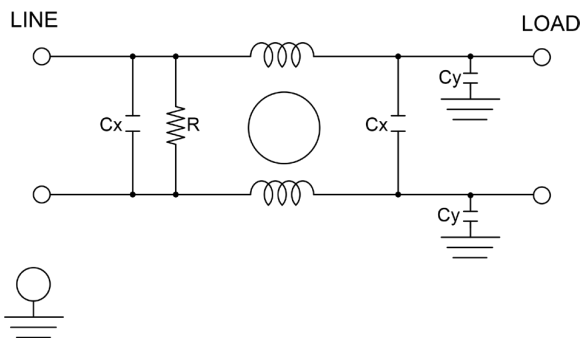
## ULTRA COMPACT SINGLE STAGE POWER LINE FILTER

### FEATURES

- » Rated currents include **1A, 3A, 6A and 10 A**
- » Single Stage Line Filter
- » Available with **QD** tabs
- » Ultra Compact Design
- » Agency Approved to UL1283, CSA C22.2, EN 60939
- » Y-cap value can be adjusted to fit specifications



### ELECTRICAL SCHEMATIC



### HOW TO ORDER

RP2180 - X - Y - Z

- Z = TERMINAL (-T)
- Y = Y-CAP, NF
- X = RATED CURRENT
- RP2180 = FILTER SERIES

**NOTE:** USE ANY COMBINATION OF -X (AMPS) WITH ANY -Y RATINGS  
E.G. **RP100-6-2.2-QD** (6AMPS WITH 2.2 NF YCAP)

For **X, Y** and **Z** options see product specification table.

### SPECIFICATIONS

OPERATING FREQUENCY	50/60Hz
USABLE FREQUENCY	DC - 400 Hz
MAX. OPERATING VOLTAGE	250V +10%
AMBIENT TEMPERATURE	-25 TO 40°C
CLIMATIC CATEGORY	25/100/21
TERMINALS (-T)	QD: 0.25" TABS

TYP. WEIGHT, LBS (KG) 0.08 (0.03)

### TYPICAL LEAKAGE CURRENT

@ 250 VAC 50 Hz	0 - 0.8 mA Max.
@ 120 VAC 60 Hz	0 - 0.4 mA Max.

### HIPOT RATINGS

LINE TO GROUND 2700 VDC

### TYPICAL APPLICATIONS

- ✓ Food Service Equipment
- ✓ Industrial and Mechanical Lighting
- ✓ Home Appliances
- ✓ Power Supplies
- ✓ Consumer Electronics

# RP2180

## ULTRA COMPACT SINGLE STAGE POWER LINE FILTER

MODEL NO.	RATED CURRENT, A @ 40° C	Y-CAP, nF	LEAKAGE CURRENT, mA @ 250V AC, 50 Hz / @ 120V AC, 60 Hz		TERMINAL OPTIONS		MAX. DIMENSIONS" (MM)		
					(QD) INPUT/ OUTPUT	(W) INPUT/ OUTPUT	WIDTH	(LENGTH)	HEIGHT
RP2180-1-0-QD	1	0	-	-	✓		2.01"(51)	2.41"(61)	0.83"(21)
RP2180-1-47-QD	1	0.47	0.07	0.04	✓		2.01"(51)	2.41"(61)	0.83"(21)
RP2180-1-1-QD	1	1	0.15	0.09	✓		2.01"(51)	2.41"(61)	0.83"(21)
RP2180-1-2.2-QD	1	2.2	0.34	0.19	✓		2.01"(51)	2.41"(61)	0.83"(21)
RP2180-1-4.7-QD	1	4.7	0.73	0.42	✓		2.01"(51)	2.41"(61)	0.83"(21)
RP2180-3-0-QD	3	0	-	-	✓		2.01"(51)	2.41"(61)	0.83"(21)
RP2180-3-47-QD	3	0.47	0.07	0.04	✓		2.01"(51)	2.41"(61)	0.83"(21)
RP2180-3-1-QD	3	1	0.15	0.09	✓		2.01"(51)	2.41"(61)	0.83"(21)
RP2180-3-2.2-QD	3	2.2	0.34	0.19	✓		2.01"(51)	2.41"(61)	0.83"(21)
RP2180-3-4.7-QD	3	4.7	0.73	0.42	✓		2.01"(51)	2.41"(61)	0.83"(21)
RP2180-6-0-QD	6	0	-	-	✓		2.01"(51)	2.41"(61)	0.83"(21)
RP2180-6-47-QD	6	0.47	0.07	0.04	✓		2.01"(51)	2.41"(61)	0.83"(21)
RP2180-6-1-QD	6	1	0.15	0.09	✓		2.01"(51)	2.41"(61)	0.83"(21)
RP2180-6-2.2-QD	6	2.2	0.34	0.19	✓		2.01"(51)	2.41"(61)	0.83"(21)
RP2180-6-4.7-QD	6	4.7	0.73	0.42	✓		2.01"(51)	2.41"(61)	0.83"(21)
RP2180-10-0-QD	10	0	-	-	✓		2.01"(51)	2.41"(61)	0.83"(21)
RP2180-10-47-QD	10	0.47	0.07	0.04	✓		2.01"(51)	2.41"(61)	0.83"(21)
RP2180-10-1-QD	10	1	0.15	0.09	✓		2.01"(51)	2.41"(61)	0.83"(21)
RP2180-10-2.2-QD	10	2.2	0.34	0.19	✓		2.01"(51)	2.41"(61)	0.83"(21)
RP2180-10-4.7-QD	10	4.7	0.73	0.42	✓		2.01"(51)	2.41"(61)	0.83"(21)

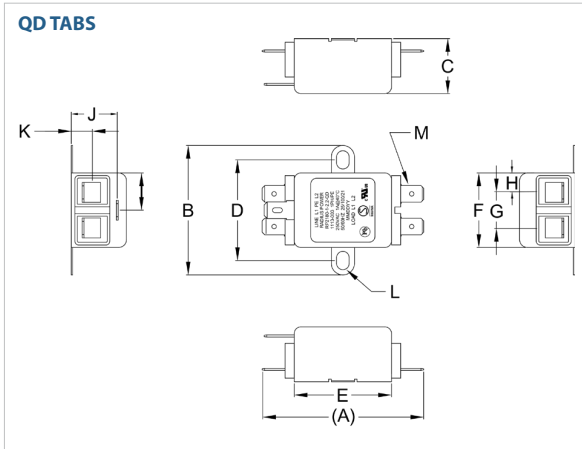
### TYPICAL INSERTION LOSS, dB (50/50 Ohm)

Amps	Freq (MHz)	0.15					0.5					1.0					10					30									
		0.15	0.5	1.0	10	30	0.15	0.5	1.0	10	30	0.15	0.5	1.0	10	30	0.15	0.5	1.0	10	30	0.15	0.5	1.0	10	30					
1	CM (dB)	46	55	55	55	40	12	26	50	50	44	30	40	55	55	60	12	22	32	50	45	22	35	42	55	60	12	22	28	50	44
	DM (dB)	12	26	50	50	44	12	22	32	50	45	10	20	26	50	60	12	20	26	50	50										
3	CM (dB)	30	40	55	55	60	12	22	32	50	45	22	35	42	55	60	12	22	28	50	44										
	DM (dB)	12	22	32	50	45	10	20	26	50	60	12	20	26	50	50															
6	CM (dB)	22	35	42	55	60	12	22	28	50	44	10	20	26	50	60	12	20	26	50	50										
	DM (dB)	12	22	28	50	44	10	20	26	50	60	12	20	26	50	50															
10	CM (dB)	10	20	26	50	60	12	20	26	50	50																				
	DM (dB)	12	20	26	50	50																									

# RP2180

## ULTRA COMPACT SINGLE STAGE POWER LINE FILTER

### RP100 MECHANICAL OUTLINES" (MM)



SERIES	(A)	B	C	D	E	F	G	H	I	J	K	L	M
QD TABS	2.41" (61)	2.01" (51)	0.83" (21)	1.52" (39)	1.46" (37)	1.12" (29)	0.56" (14)	0.28" (7)	0.56" (14)	0.69" (18)	0.31" (8)	Ø 0.27"x0.18", 2x (Ø 7.0x4.8, 2x)	0.25", 5x (QD, MALE, 6.35, 5x)

TYPICAL TOLERANCE: +/- 0.02" (0.50MM)