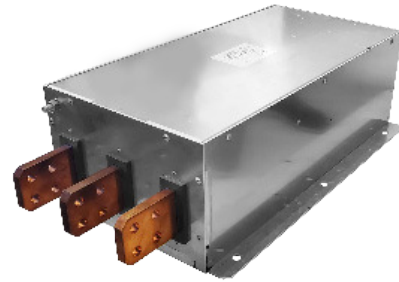


RP395

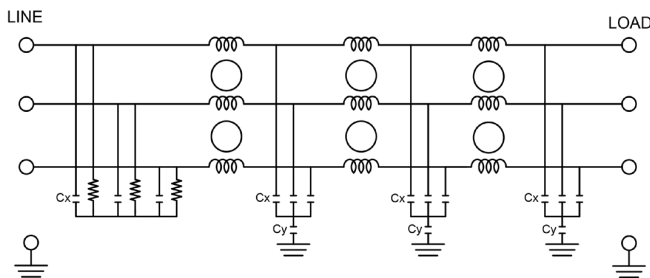
3-PHASE **DELTA** 1000VAC MULTI-STAGE EMI POWER LINE FILTER

FEATURES

- » Rated currents include **150A, 180A, 250A, 320A, 400A, 600A, 800A, 1000A, 1600A and 2500A**
- » Multi-Stage Line Filter
- » Available with **W** (wires), **S** (studs), **C** (connectors) and **B** (Bus Bars) option
- » Agency Approved to UL1283 / 60929, CSA C22.2, EN60939 (Up to 2500A Testing successfully completed. Certificate in process.)
- » Y-cap value can be adjusted to fit specification



ELECTRICAL SCHEMATIC



SPECIFICATIONS

OPERATING FREQUENCY	50/60Hz
USABLE FREQUENCY	DC - 400 Hz
MAX. OPERATING VOLTAGE	1000VAC +10%
AMBIENT TEMPERATURE	-25 TO 50°C
CLIMATIC CATEGORY	25/100/21
TERMINALS (-T)	WIRELEADS STUDS 150-250A(M10) CONNECTORS BUSBARS 320-400A(6X25), 600A(8X25), 800-1000A(8X40) 1500A(10X60), 2500A(15X70)

TYP. WEIGHT, LBS (KG) 14.0-39.0 (6.7-17.7)

TYPICAL LEAKAGE CURRENT

@ 480 VAC 60 Hz 0 - 42.0 mA Max.

HIPOT RATINGS

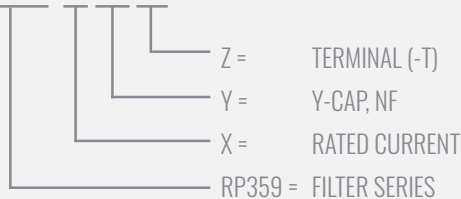
LINE TO GROUND 3800 VDC

TYPICAL APPLICATIONS

- ✓ Hydrogen Generation/Electrolyzer
- ✓ Energy Storage Systems (ESS/BSS)
- ✓ High-Current Rectifiers
- ✓ High Power Inverter
- ✓ Megawatt Chargers

HOW TO ORDER

RP395- X - Y - Z



NOTE: USE ANY COMBINATION OF -X (AMPS) WITH ANY -Y RATINGS

E.G. **RP395-320-10-B** (320AMPS WITH 10 NF YCAP)

For **X, Y** and **Z** options see product specification table.

RP395

3-PHASE DELTA 1000VAC MULTI-STAGE EMI POWER LINE FILTER

MODEL NO.	RATED CURRENT, A @ 40° C	Y-CAP, nF	LEAKAGE CURRENT mA, @ 1000V AC/60 Hz	TERMINAL OPTIONS				MAX. DIMENSIONS" (MM)		
				(W) IN/OUTPUT	(S) IN/OUTPUT	(C) IN/OUTPUT	(B) IN/OUTPUT	WIDTH	(LENGTH)	HEIGHT
RP395-150-0-C	150	0	0.00			✓		*	*	*
RP395-150-0-S	150	0	0.00		✓			8.27"(210)	14.80*(376)	4.72"(120)
RP395-150-0-W	150	0	0.00	✓				*	*	*
RP395-150-10-C	150	10	0.21			✓		*	*	*
RP395-150-10-S	150	10	0.21		✓			8.27"(210)	14.80*(376)	4.72"(120)
RP395-150-10-W	150	10	0.21	✓				*	*	*
RP395-150-100-C	150	100	2.10			✓		*	*	*
RP395-150-100-S	150	100	2.10		✓			8.27"(210)	14.80*(376)	4.72"(120)
RP395-150-100-W	150	100	2.10	✓				*	*	*
RP395-150-1000-C	150	1000	21.00			✓		*	*	*
RP395-150-1000-S	150	1000	21.00		✓			8.27"(210)	14.80*(376)	4.72"(120)
RP395-150-1000-W	150	1000	21.00	✓				*	*	*
RP395-150-2000-C	150	2000	42.00			✓		*	*	*
RP395-150-2000-S	150	2000	42.00		✓			8.27"(210)	14.80*(376)	4.72"(120)
RP395-150-2000-W	150	2000	42.00	✓				*	*	*
RP395-180-0-C	180	0	0.00			✓		*	*	*
RP395-180-0-S	180	0	0.00		✓			8.27"(210)	14.80*(376)	4.72"(120)
RP395-180-0-W	180	0	0.00	✓				*	*	*
RP395-180-10-C	180	10	0.21			✓		*	*	*
RP395-180-10-S	180	10	0.21		✓			8.27"(210)	14.80*(376)	4.72"(120)
RP395-180-10-W	180	10	0.21	✓				*	*	*
RP395-180-100-C	180	100	2.10			✓		*	*	*
RP395-180-100-S	180	100	2.10		✓			8.27"(210)	14.80*(376)	4.72"(120)
RP395-180-100-W	180	100	2.10	✓				*	*	*
RP395-180-1000-C	180	1000	21.00			✓		*	*	*
RP395-180-1000-S	180	1000	21.00		✓			8.27"(210)	14.80*(376)	4.72"(120)
RP395-180-1000-W	180	1000	21.00	✓				*	*	*
RP395-180-2000-C	180	2000	42.00			✓		*	*	*
RP395-180-2000-S	180	2000	42.00		✓			8.27"(210)	14.80*(376)	4.72"(120)
RP395-180-2000-W	180	2000	42.00	✓				*	*	*
RP395-250-0-S	250	0	0.00		✓			9.06"(230)	14.80*(376)	4.92"(125)
RP395-250-10-S	250	10	0.21		✓			9.06"(230)	14.80*(376)	4.92"(125)
RP395-250-100-S	250	100	2.10		✓			9.06"(230)	14.80*(376)	4.92"(125)
RP395-250-1000-S	250	1000	21.00		✓			9.06"(230)	14.80*(376)	4.92"(125)

ADDITIONAL MODEL NO. >>

RP395

3-PHASE **DELTA** 1000VAC MULTI-STAGE EMI POWER LINE FILTER

MODEL NO.	RATED CURRENT, A @ 40° C	Y-CAP, nF	LEAKAGE CURRENT mA, @ 1000V AC/60 Hz	TERMINAL OPTIONS				MAX. DIMENSIONS" (MM)		
				(W) IN/ OUTPUT	(S) IN/ OUTPUT	(C) IN/ OUTPUT	(B) IN/ OUTPUT	WIDTH	(LENGTH)	HEIGHT
RP395-250-2000-S	250	2000	42.00		✓			9.06"(230)	14.80*(376)	4.92*(125)
RP395-320-0-B	320	0	0.00				✓	10.24*(260)	15.20*(386)	4.53*(115)
RP395-320-10-B	320	10	0.21				✓	10.24*(260)	15.20*(386)	4.53*(115)
RP395-320-100-B	320	100	2.10				✓	10.24*(260)	15.20*(386)	4.53*(115)
RP395-320-1000-B	320	1000	21.00				✓	10.24*(260)	15.20*(386)	4.53*(115)
RP395-320-2000-B	320	2000	42.00				✓	10.24*(260)	15.20*(386)	4.53*(115)
RP395-400-0-B	400	0	0.00				✓	10.24*(260)	15.20*(386)	4.53*(115)
RP395-400-10-B	400	10	0.21				✓	10.24*(260)	15.20*(386)	4.53*(115)
RP395-400-100-B	400	100	2.10				✓	10.24*(260)	15.20*(386)	4.53*(115)
RP395-400-1000-B	400	1000	21.00				✓	10.24*(260)	15.20*(386)	4.53*(115)
RP395-400-2000-B	400	2000	42.00				✓	10.24*(260)	15.20*(386)	4.53*(115)
RP395-600-0-B	600	0	0.00				✓	10.24*(260)	15.20*(386)	5.31*(135)
RP395-600-10-B	600	10	0.21				✓	10.24*(260)	15.20*(386)	5.31*(135)
RP395-600-100-B	600	100	2.10				✓	10.24*(260)	15.20*(386)	5.31*(135)
RP395-600-1000-B	600	1000	21.00				✓	10.24*(260)	15.20*(386)	5.31*(135)
RP395-600-2000-B	600	2000	42.00				✓	10.24*(260)	15.20*(386)	5.31*(135)
RP395-600-2000-B	600	2000	42.00				✓	10.24*(260)	15.20*(386)	5.31*(135)
RP395-800-0-B	800	0	0.00				✓	11.02*(280)	17.95*(456)	6.69*(170)
RP395-800-10-B	800	10	0.21				✓	11.02*(280)	17.95*(456)	6.69*(170)
RP395-800-100-B	800	100	2.10				✓	11.02*(280)	17.95*(456)	6.69*(170)
RP395-800-1000-B	800	1000	21.00				✓	11.02*(280)	17.95*(456)	6.69*(170)
RP395-800-2000-B	800	2000	42.00				✓	11.02*(280)	17.95*(456)	6.69*(170)
RP395-1000-0-B	1000	0	0.00				✓	11.02*(280)	17.95*(456)	6.69*(170)
RP395-1000-10-B	1000	10	0.21				✓	11.02*(280)	17.95*(456)	6.69*(170)
RP395-1000-100-B	1000	100	2.10				✓	11.02*(280)	17.95*(456)	6.69*(170)
RP395-1000-1000-B	1000	1000	21.00				✓	11.02*(280)	17.95*(456)	6.69*(170)
RP395-1000-2000-B	1000	2000	42.00				✓	11.02*(280)	17.95*(456)	6.69*(170)
RP395-1000-2000-B	1000	2000	42.00				✓	11.02*(280)	17.95*(456)	6.69*(170)
RP395-1600-0-B	1600	0	0.00				✓	11.81*(300)	23.07*(586)	6.30*(160)
RP395-1600-10-B	1600	10	0.21				✓	11.81*(300)	23.07*(586)	6.30*(160)
RP395-1600-100-B	1600	100	2.10				✓	11.81*(300)	23.07*(586)	6.30*(160)
RP395-1600-1000-B	1600	1000	21.00				✓	11.81*(300)	23.07*(586)	6.30*(160)
RP395-1600-2000-B	1600	2000	42.00				✓	11.81*(300)	23.07*(586)	6.30*(160)
RP395-2500-0-B	2500	0	0.00				✓	14.57*(370)	31.34*(796)	7.87*(200)

ADDITIONAL MODEL NO. >>

RP395

3-PHASE **DELTA** 1000VAC MULTI-STAGE EMI POWER LINE FILTER

MODEL NO.	RATED CURRENT, A @ 40° C	Y-CAP, nF	LEAKAGE CURRENT mA, @ 1000V AC/60 Hz	TERMINAL OPTIONS				MAX. DIMENSIONS" (MM)		
				(W) IN/ OUTPUT	(S) IN/ OUTPUT	(C) IN/ OUTPUT	(B) IN/ OUTPUT	WIDTH	(LENGTH)	HEIGHT
RP395-2500-10-B	2500	10	0.21				✓	14.57"(370)	31.34"(796)	7.87"(200)
RP395-2500-100-B	2500	100	2.10				✓	14.57"(370)	31.34"(796)	7.87"(200)
RP395-2500-1000-B	2500	1000	21.00				✓	14.57"(370)	31.34"(796)	7.87"(200)
RP395-2500-2000-B	2500	2000	42.00				✓	14.57"(370)	31.34"(796)	7.87"(200)

*Contact factory for dimensions.

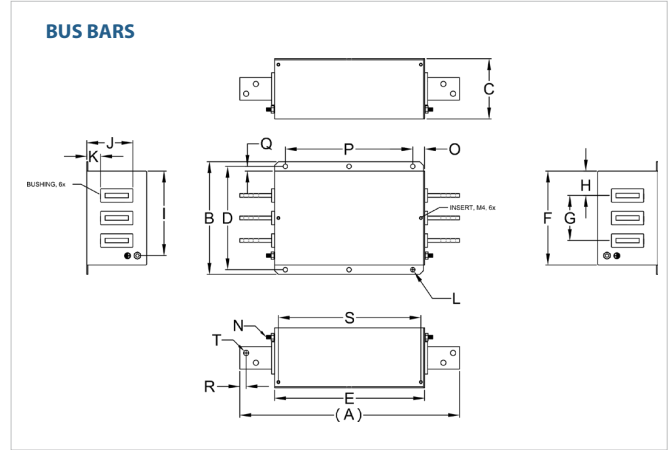
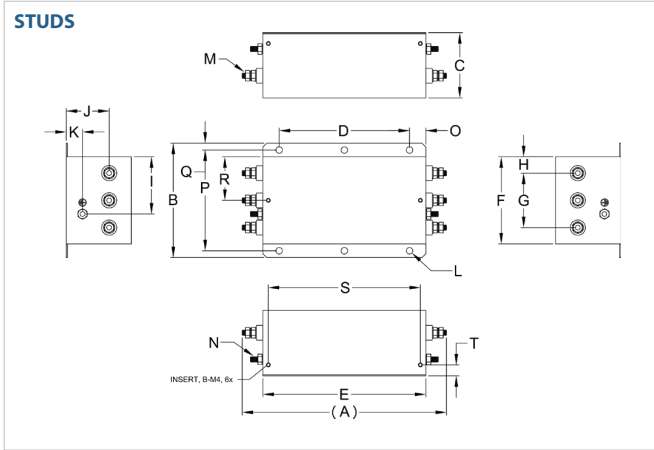
TYPICAL INSERTION LOSS, dB (50/50 Ohm)

Amps	Freq (MHz)	0.15	0.5	1.0	10	30
150	CM (dB)	65	80	80	40	20
	DM (dB)	65	65	60	35	20
180	CM (dB)	65	80	80	40	20
	DM (dB)	65	65	60	35	20
250	CM (dB)	65	80	80	40	20
	DM (dB)	65	65	60	35	20
320	CM (dB)	65	80	80	40	20
	DM (dB)	65	65	60	35	20
400	CM (dB)	65	80	80	40	20
	DM (dB)	65	65	60	35	20
600	CM (dB)	65	80	80	40	20
	DM (dB)	65	65	60	35	20
800	CM (dB)	65	80	80	40	20
	DM (dB)	65	65	60	35	20
1000	CM (dB)	65	80	80	40	20
	DM (dB)	65	65	60	35	20
1600	CM (dB)	65	80	80	40	20
	DM (dB)	65	65	60	35	20
2500	CM (dB)	65	80	80	40	20
	DM (dB)	65	65	60	35	20

RP395

3-PHASE DELTA 1000VAC MULTI-STAGE EMI POWER LINE FILTER

RP395 MECHANICAL OUTLINES (MM)



SERIES	(A)	B	C	D	E	F	G	H	I	J	K	L	M	N	O	P	Q	R	S	T
STUDS (150/180A)	14.80" (376)	8.27" (210)	4.72" (120)	9.45" (240)	11.81" (300)	6.30" (160)	3.94" (100)	1.18" (30)	4.13" (105)	3.11" (79)	1.18" (30)	Ø0.47" (Ø12.0), 6x	STUD, M10, 6x	STUD, GND, M10, 2x	1.18" (30)	7.28" (185)	0.49" (13)	3.15" (80)	11.02" (280)	0.78" (20)
STUDS (250A)	14.80" (376)	9.06" (230)	4.92" (125)	9.45" (240)	11.81" (300)	7.09" (180)	4.33" (110)	1.38" (35)	4.63" (118)	3.31" (84)	1.38" (35)	Ø0.47" (Ø12.0), 6x	STUD, M10, 6x	STUD, GND, M10, 2x	1.18" (30)	8.07" (205)	0.49" (13)	3.54" (90)	11.02" (280)	0.78" (20)
BUS BARS (320/400A)	15.20" (386)	10.24" (260)	4.53" (115)	9.25" (235)	11.81" (300)	8.27" (210)	4.72" (120)	1.78" (45)	7.48" (190)	2.43" (62)	0.59" (15)	Ø0.47" (Ø12.0), 6x	6x25MM 3x, BUS BARS	STUD, GND, M10, 2x	1.18" (30)	9.45" (240)	0.49" (13)	0.59" (15)	11.02" (280)	Ø10.5" 6X
BUS BARS (600A)	15.20" (386)	10.24" (260)	5.31" (135)	9.25" (235)	11.81" (300)	8.27" (210)	4.72" (120)	1.77" (45)	7.48" (190)	2.43" (62)	0.59" (15)	Ø0.47" (Ø12.0), 6x	8x25MM 3x, BUS BARS	STUD, GND, M10, 2x	1.18" (30)	9.45" (240)	0.49" (13)	0.59" (15)	11.02" (280)	Ø10.5" 6X
BUS BARS (800/1000A)	17.95" (456)	11.02" (280)	6.69" (170)	10.04" (255)	13.78" (350)	9.06" (230)	4.72" (120)	2.17" (55)	8.07" (205)	3.19" (81)	0.75" (19)	Ø0.47" (Ø12.0), 6x	8x40MM 3x, BUS BARS	STUD, GND, M10, 2x	1.18" (30)	11.42" (290)	0.49" (13)	0.79" (20)	12.99" (330)	Ø14" 6X
BUS BARS (1600A)	23.07" (586)	11.81" (300)	6.30" (160)	10.83" (275)	15.75" (400)	9.84" (250)	4.72" (120)	2.56" (65)	8.86" (225)	4.84" (123)	1.46" (37)	Ø0.47" (Ø12.0), 6x	10x60MM 3x, BUS BARS	STUD, GND, M10, 2x	1.18" (30)	13.39" (340)	0.49" (13)	0.67" (17)	14.96" (380)	Ø14" 12X
BUS BARS (2500A)	31.34" (796)	14.57" (370)	7.87" (200)	12.99" (330)	23.62" (600)	11.81" (300)	7.87" (200)	1.97" (50)	10.83" (275)	5.20" (132)	1.50" (38)	Ø0.55" (Ø14.0), 6x	15x70MM 3x, BUS BARS	STUD, GND, M10, 2x	1.97" (50)	19.69" (500)	0.59" (15)	0.79" (20)	22.83" (580)	Ø14" 24X

TYPICAL TOLERANCE: +/-0.02" (0.50MM)

RP395

3-PHASE DELTA 1000VAC MULTI-STAGE EMI POWER LINE FILTER

DETAIL A

