

RP410HP

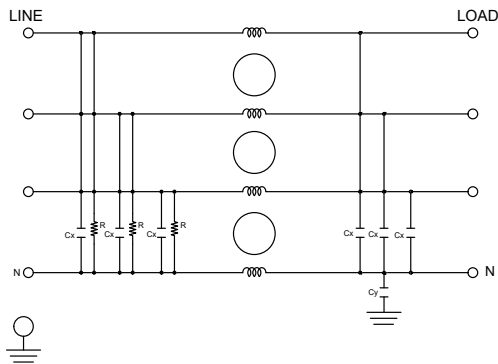
ULTRA COMPACT HIGH PERFORMANCE 3-PHASE **WYE** SINGLE STAGE POWER LINE FILTER

FEATURES

- » Rated currents include **6A, 10A, and 20A**
- » Single Stage Line Filter
- » Available with **QD** (tabs), **W** (wires), and **S** (studs) option
- » High Performance
- » Ultra Compact Design
- » Agency Approved to UL1283 / 60929, CSA C22.2, EN 60939
- » Y-cap value can be adjusted to fit specification



ELECTRICAL SCHEMATIC



SPECIFICATIONS

OPERATING FREQUENCY	50/60Hz
USABLE FREQUENCY	DC - 400 Hz
MAX. OPERATING VOLTAGE*	480V +10%
AMBIENT TEMPERATURE	-25 TO 50°C
CLIMATIC CATEGORY	25/100/21
TERMINALS (-T)	QD: 0.25" TABS WIRE LEADS STUDS (M5)
TYP. WEIGHT, LBS (KG)	0.7 (0.3)

TYPICAL LEAKAGE CURRENT

@ 480 VAC 60 Hz	0 - 1.0 mA Max.
-----------------	-----------------

HIPOT RATINGS

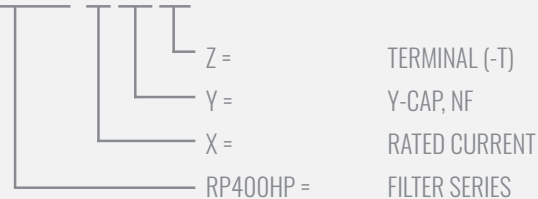
LINE TO GROUND	3500 VDC
----------------	----------

TYPICAL APPLICATIONS

- ✓ Laser products
- ✓ Industrial automation equipment
- ✓ Industrial lighting
- ✓ Testing and measurement devices
- ✓ Ultrasonic cleaners

HOW TO ORDER

RP400HP-X-Y-Z



NOTE: USE ANY COMBINATION OF -X (AMPS) WITH ANY -Y RATINGS
E.G. **RP410HP-6-10-QD** (6AMPS WITH 10 NF YCAP)

For **X, Y** and **Z** options see product specification table.

RP410HP

ULTRA COMPACT HIGH PERFORMANCE 3-PHASE **WYE** SINGLE STAGE POWER LINE FILTER

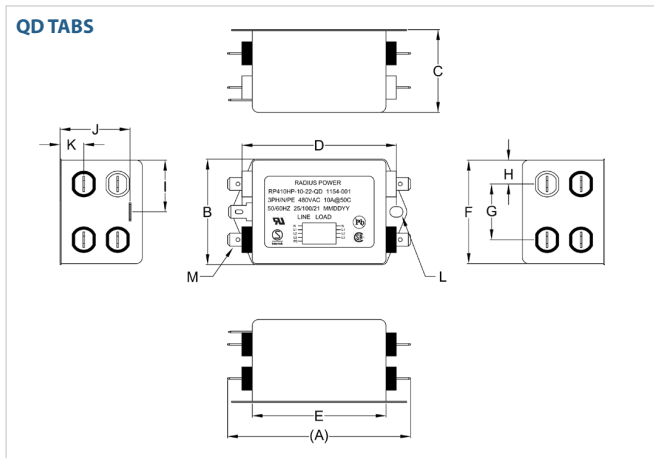
MODEL NO.	RATED CURRENT, A @ 40° C	Y-CAP, nF	LEAKAGE CURRENT mA, @ 480V AC/60 Hz	TERMINAL OPTIONS			MAX. DIMENSIONS" (MM)		
				(QD) INPUT/ OUTPUT	(W) INPUT/ OUTPUT	(S) INPUT/ OUTPUT	WIDTH	(LENGTH)	HEIGHT
RP410HP-6-0-QD	6	0	-	✓			2.01"(51)	3.50"(89)	1.57"(40)
RP410HP-6-0-S	6	0	-			✓	*	*	*
RP410HP-6-0-W	6	0	-		✓		*	*	*
RP410HP-6-10-QD	6	10	0.10	✓			2.01"(51)	3.50"(89)	1.57"(40)
RP410HP-6-10-S	6	10	0.10			✓	*	*	*
RP410HP-6-10-W	6	10	0.10		✓		*	*	*
RP410HP-6-22-QD	6	22	0.20	✓			2.01"(51)	3.50"(89)	1.57"(40)
RP410HP-6-22-S	6	22	0.20			✓	*	*	*
RP410HP-6-22-W	6	22	0.20		✓		*	*	*
RP410HP-10-0-QD	10	0	-	✓			2.01"(51)	3.50"(89)	1.57"(40)
RP410HP-10-0-S	10	0	-			✓	*	*	*
RP410HP-10-0-W	10	0	-		✓		*	*	*
RP410HP-10-10-QD	10	10	0.10	✓			2.01"(51)	3.50"(89)	1.57"(40)
RP410HP-10-10-S	10	10	0.10			✓	*	*	*
RP410HP-10-10-W	10	10	0.10		✓		*	*	*
RP410HP-10-22-QD	10	22	0.20	✓			2.01"(51)	3.50"(89)	1.57"(40)
RP410HP-10-22-S	10	22	0.20			✓	*	*	*
RP410HP-10-22-W	10	22	0.20		✓		*	*	*
RP410HP-20-0-QD	20	0	-	✓			2.01"(51)	3.50"(89)	1.57"(40)
RP410HP-20-0-S	20	0	-			✓	*	*	*
RP410HP-20-0-W	20	0	-		✓		*	*	*
RP410HP-20-10-QD	20	10	0.10	✓			2.01"(51)	3.50"(89)	1.57"(40)
RP410HP-20-10-S	20	10	0.10			✓	*	*	*
RP410HP-20-10-W	20	10	0.10		✓		*	*	*
RP410HP-20-22-QD	20	22	0.20	✓			2.01"(51)	3.50"(89)	1.57"(40)
RP410HP-20-22-S	20	22	0.20			✓	*	*	*
RP410HP-20-22-W	20	22	0.20		✓		*	*	*

*Contact factory for dimensions.

RP410HP

ULTRA COMPACT HIGH PERFORMANCE 3-PHASE **WYE** SINGLE STAGE POWER LINE FILTER

RP410HP MECHANICAL OUTLINES (MM)



SERIES	(A)	B	C	D	E	F	G	H	I	J	K	L	M	N
QD TABS	3.50" (89)	2.01" (51)	1.57" (40)	2.95" (75)	2.56" (65)	1.97" (50)	1.06" (27)	0.45" (12)	0.98" (25)	1.34" (34)	0.45" (12)	Ø 0.25"x0.20", 2x (Ø 6.4x5.1, 2x)	0.25", 9x (QD, MALE, 6.35, 9x)	R3.0, 4x

TYPICAL TOLERANCE: +/-0.02" (0.50MM)

TYPICAL INSERTION LOSS, dB (50/50 Ohm)

Amps	Freq (MHz)	Insertion Loss (dB)				
		0.15	0.5	1.0	10	30
6	CM (dB)	75	75	75	60	50
	DM (dB)	60	75	75	68	50
10	CM (dB)	65	75	70	55	50
	DM (dB)	50	75	75	75	65
20	CM (dB)	55	70	70	65	45
	DM (dB)	65	75	75	75	50