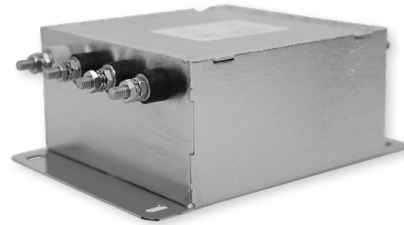


RPM8000

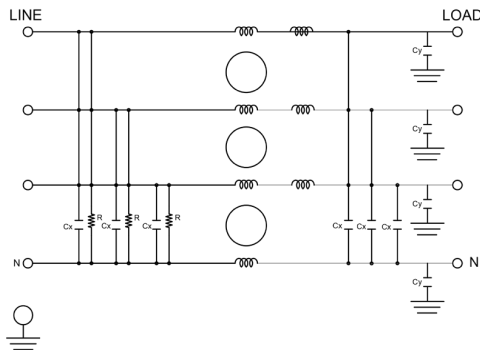
MIL/COTS 3-PHASE WYE EMI POWER LINE FILTER

FEATURES

- » Rated currents include **5A, 10A, 20A, 30A, 50A, 80A, 125A and 150A**
- » Dual Stage Line Filter
- » Available with **S** (studs)
- » Agency Approved to RoHS
- » Y-cap value can be adjusted to fit specification



ELECTRICAL SCHEMATIC



SPECIFICATIONS

| | |
|------------------------|---|
| OPERATING FREQUENCY | 50/60/400 Hz |
| MAX. OPERATING VOLTAGE | 480 VAC +10% |
| AMBIENT TEMPERATURE | -40 TO 70°C |
| CLIMATIC CATEGORY | 40/100/21 |
| TERMINALS (-T) | STUDS: 5-50A (M5), 80A (M6), 125-150A (M10) |

TYP. WEIGHT, LBS (KG) 2.7-35(1.22-15.87)

TYPICAL LEAKAGE CURRENT

@ 480 VAC 60 Hz 0 - 3.50 mA Max.

HIPOT RATINGS

LINE TO GROUND 1800 VDC

TYPICAL APPLICATIONS

- ✓ Mil-461/ DO-160

NOTE:

- ✓ Call for other termination types (e.g. Circular Mil-Connector, etc.)

HOW TO ORDER

RPM8000 - Y - Z

Z = TERMINAL (-T)
X = RATED CURRENT

RPM8000=FILTER SERIES

NOTE: USE ANY COMBINATION OF -X (AMPS) WITH ANY -Y RATINGS

E.G. **RPM8000-10-S**(10 AMPS)

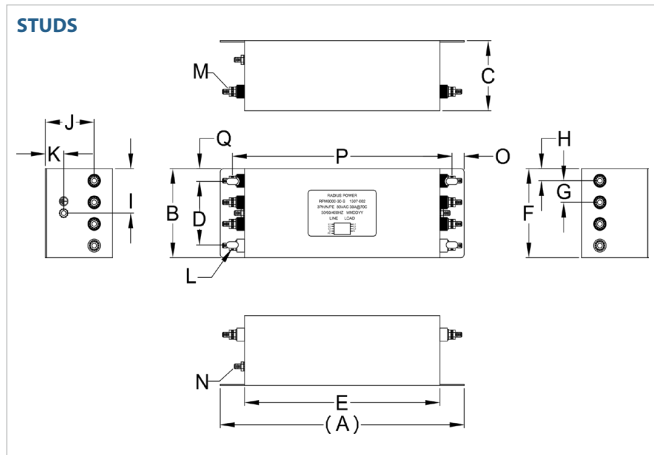
For **X** and **Y** options see product specification table.

RPM8000

MIL/COTS 3-PHASE WYE EMI POWER LINE FILTER

| MODEL NO. | RATED CURRENT, A @ 40° C | LEAKAGE CURRENT, mA @ 480V AC, 60 Hz | TERMINAL OPTIONS | | | MAX. DIMENSIONS" (MM) | | |
|---------------|--------------------------|--------------------------------------|--------------------|-------------------|-------------------|-----------------------|-------------|------------|
| | | | (QD) INPUT/ OUTPUT | (W) INPUT/ OUTPUT | (S) INPUT/ OUTPUT | WIDTH | (LENGTH) | HEIGHT |
| RPM8000-5-S | 5 | 3.50 | | | ✓ | 4.25"(108) | 6.06"(154) | 2.25"(57) |
| RPM8000-10-S | 10 | 3.50 | | | ✓ | 4.25"(108) | 6.06"(154) | 2.25"(57) |
| RPM8000-20-S | 20 | 3.50 | | | ✓ | 4.00"(102) | 6.76"(172) | 2.75"(70) |
| RPM8000-30-S | 30 | 3.50 | | | ✓ | 3.50"(89) | 10.00"(254) | 2.75"(70) |
| RPM8000-50-S | 50 | 3.50 | | | ✓ | 3.90"(99) | 12.36"(314) | 3.25"(83) |
| RPM8000-80-S | 80 | 3.50 | | | ✓ | 6.60"(168) | 12.00"(305) | 4.50"(114) |
| RPM8000-125-S | 125 | 3.50 | | | ✓ | 9.60"(244) | 17.00"(432) | 4.50"(114) |
| RPM8000-150-S | 150 | 3.50 | | | ✓ | 9.60"(244) | 17.00"(432) | 4.50"(114) |

RPM8000 MECHANICAL OUTLINES (MM)



| SERIES | (A) | B | C | D | E | F | G | H | I | J | K | L | M | N | O | P | Q |
|-------------------------|--------------|-------------|-------------|-------------|--------------|-------------|-------------|------------|------------|------------|------------|-------------------------------------|---------------|----------------|------------|--------------|------------|
| STUDS (5/10A) | 6.06" (154) | 4.25" (108) | 2.25" (57) | 3.50" (89) | 4.25" (108) | 4.25" (108) | 0.90" (23) | 0.75" (19) | 2.13" (54) | 1.80" (46) | 0.75" (19) | Ø 0.40"x0.20", 4x Ø 10.2x5.1, 4x | STUD, M5, 8x | STUD, GND, M5 | 0.37" (10) | 5.00" (127) | 0.38" (10) |
| STUDS (20A) | 6.76" (172) | 4.00" (102) | 2.75" (70) | 3.25" (83) | 5.00" (127) | 4.00" (102) | 1.00" (25) | 0.50" (13) | 2.00" (51) | 2.20" (56) | 1.00" (25) | Ø 0.40"x0.20", 4x Ø 10.2x5.1, 4x | STUD, M5, 8x | STUD, GND, M5 | 0.45" (11) | 5.80" (147) | 0.38" (10) |
| STUDS (30A) | 10.00" (254) | 3.50" (89) | 2.75" (70) | 2.50" (64) | 8.00" (203) | 3.50" (89) | 0.85" (22) | 0.48" (12) | 1.75" (44) | 2.00" (51) | 0.75" (19) | Ø 0.48"x0.25", 4x Ø 12.2x6.5, 4x | STUD, M5, 8x | STUD, GND, M5 | 0.50" (13) | 9.00" (229) | 0.50" (13) |
| STUDS (50A) | 12.36" (314) | 3.90" (99) | 3.25" (83) | 3.00" (76) | 10.00" (254) | 4.00" (102) | 0.90" (23) | 0.65" (17) | 2.00" (51) | 2.25" (57) | 1.00" (25) | Ø 0.50"x0.25", 4x Ø 12.7x6.4, 4x | STUD, M6, 8x | STUD, GND, M6 | 0.50" (13) | 11.00" (279) | 0.45" (11) |
| STUDS (80A) | 12.00" (305) | 6.60" (168) | 4.50" (114) | 5.12" (130) | 10.00" (254) | 6.60" (168) | 1.50" (38) | 1.00" (25) | 3.30" (84) | 3.50" (89) | 1.00" (25) | 0.59"x0.25", 4x Ø 15.2x6.4, 4x | STUD, M6, 4x | STUD, GND, M6 | 0.50" (13) | 11.00" (279) | 0.74" (19) |
| STUDS (125/150A) | 17.00" (432) | 9.60" (244) | 4.50" (114) | 8.00" (203) | 15.00" (381) | 9.60" (244) | 4.80" (122) | 2.40" (61) | 3.25" (83) | 3.25" (83) | 1.00" (25) | N/A | STUD, M10, 8x | STUD, GND, M10 | 0.50" (13) | 16.00" (406) | 0.80" (20) |

TYPICAL TOLERANCE: +/-0.02" (0.50MM)

RPM8000

MIL/COTS 3-PHASE **WYE** EMI POWER LINE FILTER

TYPICAL INSERTION LOSS, dB (50/50 Ohm)

| Amps | Freq (MHz) | 0.15 | 0.5 | 1.0 | 10 | 30 |
|------|------------|------|-----|-----|----|----|
| 5 | CM (dB) | 30 | 48 | 60 | 55 | 40 |
| | DM (dB) | 22 | 40 | 55 | 55 | 45 |
| 10 | CM (dB) | 30 | 48 | 60 | 55 | 40 |
| | DM (dB) | 22 | 40 | 55 | 55 | 45 |
| 20 | CM (dB) | 30 | 48 | 60 | 55 | 40 |
| | DM (dB) | 22 | 40 | 55 | 55 | 45 |
| 30 | CM (dB) | 30 | 48 | 60 | 55 | 40 |
| | DM (dB) | 22 | 40 | 55 | 55 | 45 |
| 50 | CM (dB) | 30 | 48 | 60 | 55 | 40 |
| | DM (dB) | 22 | 40 | 55 | 55 | 45 |
| 80 | CM (dB) | 30 | 48 | 60 | 55 | 40 |
| | DM (dB) | 22 | 40 | 55 | 55 | 45 |
| 125 | CM (dB) | 30 | 48 | 60 | 55 | 40 |
| | DM (dB) | 22 | 40 | 55 | 55 | 45 |
| 150 | CM (dB) | 30 | 48 | 60 | 55 | 40 |
| | DM (dB) | 22 | 40 | 55 | 55 | 45 |



RPM8000

MIL/COTS 3-PHASE **WYE** EMI POWER LINE FILTER



RPM8000

MIL/COTS 3-PHASE **WYE** EMI POWER LINE FILTER



RPM8000

MIL/COTS 3-PHASE **WYE** EMI POWER LINE FILTER



RPM8000

MIL/COTS 3-PHASE **WYE** EMI POWER LINE FILTER