

# RP610

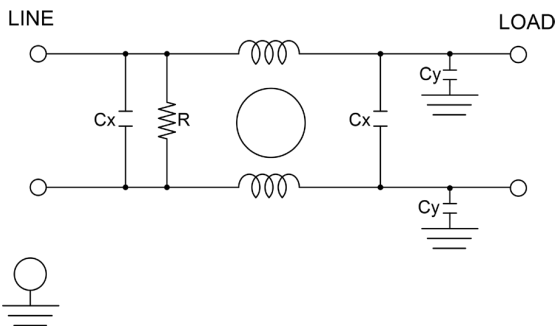
## HIGH PERFORMANCE SINGLE STAGE DC POWER LINE FILTER

### FEATURES

- » Rated currents include **3A, 6A, 10A, 12A, and 20A**
- » Single Stage Line Filter
- » Available with **QD** (tabs), **W** (wires), and **S** (studs) option
- » High Performance Design
- » Agency Approved to UL1283 / 60929, CSA C22.2, EN 60939
- » Y-cap value can be adjusted to fit specification



### ELECTRICAL SCHEMATIC



### SPECIFICATIONS

<b>MAX. OPERATING VOLTAGE</b>	250V +10%
<b>AMBIENT TEMPERATURE</b>	-25 TO 55°C
<b>CLIMATIC CATEGORY</b>	25/100/21
<b>TERMINALS (-T)</b>	QD TABS: 0.25"
	WIRE LEADS
	STUDS 3-20A (M4)
<b>TYP. WEIGHT, LBS (KG)</b>	0.7 (0.3)

### HOW TO ORDER

RP610-X-Y-Z

- Z = TERMINAL (-T)
- Y = Y-CAP, NF
- X = RATED CURRENT
- RP610 = FILTER SERIES

**NOTE:** USE ANY COMBINATION OF -X (AMPS) WITH ANY -Y RATINGS  
E.G. **RP610-10-1000-S** (10AMPS WITH 1000 NF YCAP)

For **X**, **Y**, and **Z** options see product specification table.

### HIPOT RATINGS

<b>LINE TO GROUND</b>	1800 VDC
-----------------------	----------

### TYPICAL APPLICATIONS

- ✓ High power rectifiers
- ✓ Uninterrupted power supplies
- ✓ Inverters
- ✓ VFD
- ✓ PWM

# RP610

## HIGH PERFORMANCE SINGLE STAGE DC POWER LINE FILTER

MODEL NO.	RATED CURRENT, A @ 40° C	Y-CAP, nF	TERMINAL OPTIONS			MAX. DIMENSIONS" (MM)		
			(QD) INPUT/ OUTPUT	(W) INPUT/ OUTPUT	(S) INPUT/ OUTPUT	WIDTH	(LENGTH)	HEIGHT
RP610-3-4.7-QD	3	4.7	✓			2.01"(51)	3.45"(88)	1.61"(41)
RP610-3-4.7-S	3	4.7			✓	2.01"(51)	3.90"(99)	1.57"(40)
RP610-3-4.7-W	3	4.7		✓		*	*	*
RP610-3-10-QD	3	10	✓			2.01"(51)	3.45"(88)	1.61"(41)
RP610-3-10-S	3	10			✓	2.01"(51)	3.90"(99)	1.57"(40)
RP610-3-10-W	3	10		✓		*	*	*
RP610-3-100-QD	3	100	✓			2.01"(51)	3.45"(88)	1.61"(41)
RP610-3-100-S	3	100			✓	2.01"(51)	3.90"(99)	1.57"(40)
RP610-3-100-W	3	100		✓		*	*	*
RP610-3-1000-QD	3	1000	✓			2.01"(51)	3.45"(88)	1.61"(41)
RP610-3-1000-S	3	1000			✓	2.01"(51)	3.90"(99)	1.57"(40)
RP610-3-1000-W	3	1000		✓		*	*	*
RP610-6-4.7-QD	6	4.7	✓			2.01"(51)	3.45"(88)	1.61"(41)
RP610-6-4.7-S	6	4.7			✓	2.01"(51)	3.90"(99)	1.57"(40)
RP610-6-4.7-W	6	4.7		✓		*	*	*
RP610-6-10-QD	6	10	✓			2.01"(51)	3.45"(88)	1.61"(41)
RP610-6-10-S	6	10			✓	2.01"(51)	3.90"(99)	1.57"(40)
RP610-6-10-W	6	10		✓		*	*	*
RP610-6-100-QD	6	100	✓			2.01"(51)	3.45"(88)	1.61"(41)
RP610-6-100-S	6	100			✓	2.01"(51)	3.90"(99)	1.57"(40)
RP610-6-100-W	6	100		✓		*	*	*
RP610-6-1000-QD	6	1000	✓			2.01"(51)	3.45"(88)	1.61"(41)
RP610-6-1000-S	6	1000			✓	2.01"(51)	3.90"(99)	1.57"(40)
RP610-6-1000-W	6	1000		✓		*	*	*
RP610-10-4.7-QD	10	4.7	✓			2.01"(51)	3.45"(88)	1.61"(41)
RP610-10-4.7-S	10	4.7			✓	2.01"(51)	3.90"(99)	1.57"(40)
RP610-10-4.7-W	10	4.7		✓		*	*	*
RP610-10-10-QD	10	10	✓			2.01"(51)	3.45"(88)	1.61"(41)
RP610-10-10-S	10	10			✓	2.01"(51)	3.90"(99)	1.57"(40)
RP610-10-10-W	10	10		✓		*	*	*
RP610-10-100-QD	10	100	✓			2.01"(51)	3.45"(88)	1.61"(41)
RP610-10-100-S	10	100			✓	2.01"(51)	3.90"(99)	1.57"(40)
RP610-10-100-W	10	100		✓		*	*	*
RP610-10-1000-QD	10	1000	✓			2.01"(51)	3.45"(88)	1.61"(41)

**ADDITIONAL MODEL NO. >>**

# RP610

## HIGH PERFORMANCE SINGLE STAGE DC POWER LINE FILTER

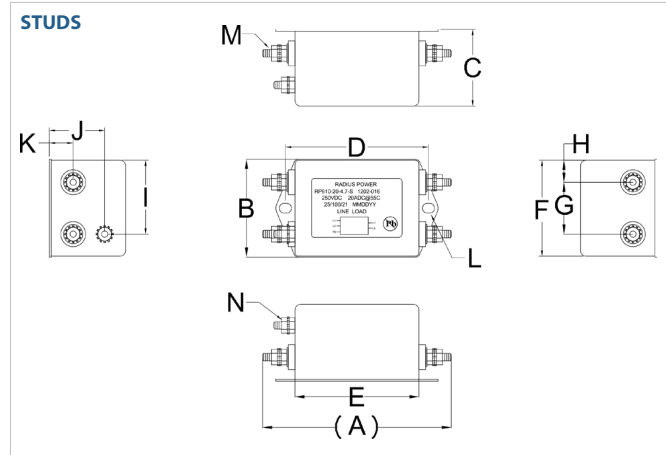
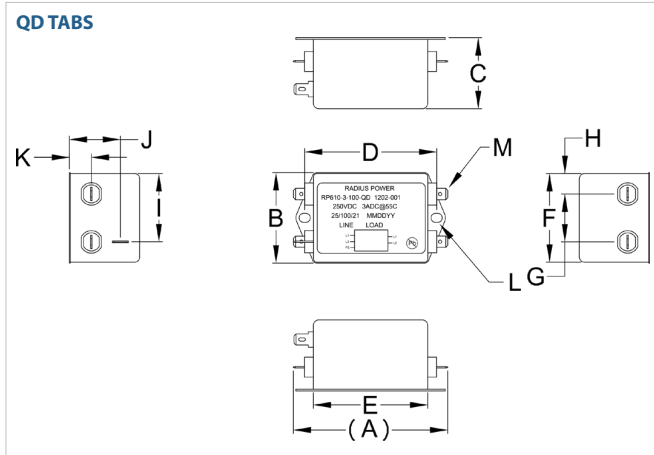
MODEL NO.	RATED CURRENT, A @ 40° C	Y-CAP, nF	TERMINAL OPTIONS			MAX. DIMENSIONS" (MM)		
			(QD) INPUT/ OUTPUT	(W) INPUT/ OUTPUT	(S) INPUT/ OUTPUT	WIDTH	(LENGTH)	HEIGHT
RP610-10-1000-S	10	1000			✓	2.01"(51)	3.90"(99)	1.57"(40)
RP610-10-1000-W	10	1000		✓		*	*	*
RP610-12-10-QD	12	10	✓			2.01"(51)	3.45"(88)	1.61"(41)
RP610-12-10-S	12	10			✓	2.01"(51)	3.90"(99)	1.57"(40)
RP610-12-10-W	12	10		✓		*	*	*
RP610-12-100-QD	12	100	✓			2.01"(51)	3.45"(88)	1.61"(41)
RP610-12-100-S	12	100			✓	2.01"(51)	3.90"(99)	1.57"(40)
RP610-12-100-W	12	100		✓		*	*	*
RP610-12-1000-QD	12	1000	✓			2.01"(51)	3.45"(88)	1.61"(41)
RP610-12-1000-S	12	1000			✓	2.01"(51)	3.90"(99)	1.57"(40)
RP610-12-1000-W	12	1000		✓		*	*	*
RP610-20-4.7-QD	20	4.7	✓			2.01"(51)	3.45"(88)	1.61"(41)
RP610-20-4.7-S	20	4.7			✓	2.01"(51)	3.90"(99)	1.57"(40)
RP610-20-4.7-W	20	4.7		✓		*	*	*
RP610-20-10-QD	20	10	✓			2.01"(51)	3.45"(88)	1.61"(41)
RP610-20-10-S	20	10			✓	2.01"(51)	3.90"(99)	1.57"(40)
RP610-20-10-W	20	10		✓		*	*	*
RP610-20-100-QD	20	100	✓			2.01"(51)	3.45"(88)	1.61"(41)
RP610-20-100-S	20	100			✓	2.01"(51)	3.90"(99)	1.57"(40)
RP610-20-100-W	20	100		✓		*	*	*
RP610-20-1000-QD	20	1000	✓			2.01"(51)	3.45"(88)	1.61"(41)
RP610-20-1000-S	20	1000			✓	2.01"(51)	3.90"(99)	1.57"(40)
RP610-20-1000-W	20	1000		✓		*	*	*

\*Contact factory for dimensions.

# RP610

## HIGH PERFORMANCE SINGLE STAGE DC POWER LINE FILTER

### RP610 MECHANICAL OUTLINES (MM)



SERIES	(A)	B	C	D	E	F	G	H	I	J	K	L	M	N
<b>QD TABS</b>	3.45" (88)	2.01" (51)	1.61" (41)	2.95" (75)	2.60" (66)	1.97" (50)	1.06" (27)	0.46" (12)	1.52" (39)	1.14" (29)	0.49" (13)	Ø0.25"x0.20", 2x (Ø 6.4x5.1, 2x)	0.25", 5x QD, MALE, 6.35, 5x	N/A
<b>STUDS</b>	3.90" (99)	2.01" (51)	1.57" (40)	2.95" (75)	2.56" (65)	1.97" (50)	1.06" (27)	0.45" (12)	1.52" (39)	1.14" (29)	0.49" (13)	Ø0.25"x0.20", 2x (Ø 6.4x5.1, 2x)	STUD, M5, 4x	STUD, GND, M5

TYPICAL TOLERANCE: +/-0.02" (0.50MM)

### TYPICAL INSERTION LOSS, dB (50/50 Ohm)

Amps	Freq (MHz)	0.15	0.5	1.0	10	30
<b>3</b>	CM (dB)	40	55	65	65	60
	DM (dB)	40	60	65	75	70
<b>6</b>	CM (dB)	40	55	65	65	60
	DM (dB)	42	62	65	75	70
<b>10</b>	CM (dB)	40	55	65	65	60
	DM (dB)	45	65	65	75	70
<b>12</b>	CM (dB)	40	55	65	65	60
	DM (dB)	45	65	65	75	70
<b>20</b>	CM (dB)	20	28	34	55	60
	DM (dB)	30	55	58	60	60