

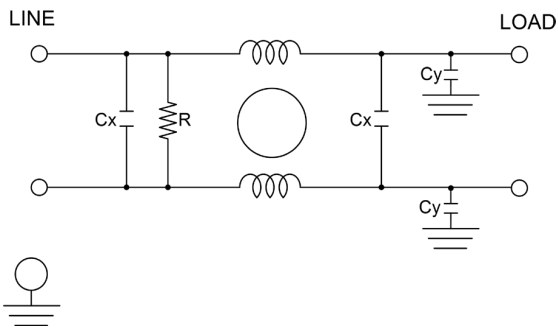
# RP681

## COMPACT HIGH CURRENT DC EMI POWER LINE FILTER, 1000V

### FEATURES

- » Rated currents include **250A, 320A, 400A, 600A, 800A and 1000A**
- » Single Stage Line Filter
- » Available with **B** (Bus Bars)
- » Compact and High Current Design
- » Agency Approved to UL 60929, CSA, C22.2, (EN60939 pending)
- » Y-cap value can be adjusted to fit specification

### ELECTRICAL SCHEMATIC



### SPECIFICATIONS

<b>MAX. OPERATING VOLTAGE</b>	1000V
<b>AMBIENT TEMPERATURE</b>	-25 TO 55°C
<b>CLIMATIC CATEGORY</b>	25/100/21
<b>TERMINALS (-T)</b>	BUS BARS 250A (4X20), 320-400A(6X25), 600A(8X25), 800-1000A(8X40)
<b>TYP. WEIGHT, LBS (KG)</b>	20.0-25.0 (9.07-11.3)

### HIPOT RATINGS

<b>LINE TO GROUND</b>	3500 VDC
-----------------------	----------

### TYPICAL APPLICATIONS

- ✓ High power rectifiers
- ✓ Inverters
- ✓ DC fast chargers
- ✓ Induction charging
- ✓ Industrial chargers
- ✓ Solar

### HOW TO ORDER

RP681-X-Y-Z

- Z = TERMINAL (-T)
- Y = Y-CAP, NF
- X = RATED CURRENT
- RP681= FILTER SERIES

**NOTE:** USE ANY COMBINATION OF -X (AMPS) WITH ANY -Y RATINGS

E.G. **RP681-250-100-B** (250AMPS WITH 100 NF YCAP)

For **X, Y,** and **Z** options see product specification table.

# RP681

## COMPACT HIGH CURRENT **DC** EMI POWER LINE FILTER, 1000V

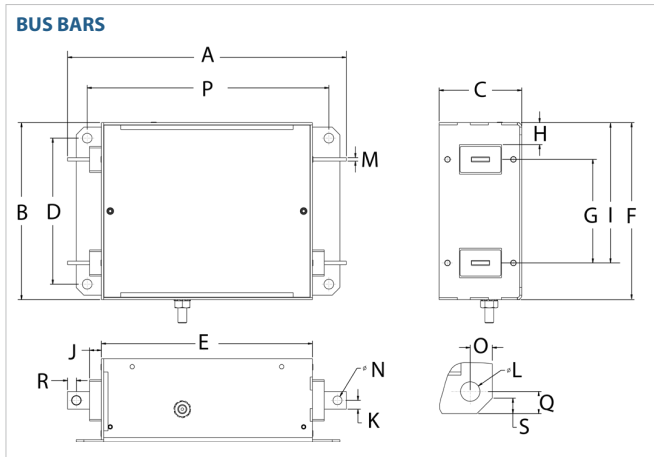
MODEL NO.	RATED CURRENT, A @ 40° C	Y-CAP, nF	TERMINAL OPTIONS				MAX. DIMENSIONS" (MM)		
			(B) INPUT/ OUTPUT 4X20	(B) INPUT/ OUTPUT 6X25	(B) INPUT/ OUTPUT 8X25	(B) INPUT/ OUTPUT 8X40	WIDTH	(LENGTH)	HEIGHT
RP681-250-0-B	250	0	✓				7.91"(201)	13.64"(321)	3.74"(95)
RP681-250-100-B	250	100	✓				7.91"(201)	13.64"(321)	3.74"(95)
RP681-250-1000-B	250	1000	✓				7.91"(201)	13.64"(321)	3.74"(95)
RP681-250-2000-B	250	2000	✓				7.91"(201)	13.64"(321)	3.74"(95)
RP681-320-0-B	320	0		✓			7.91"(201)	13.64"(321)	3.74"(95)
RP681-320-100-B	320	100		✓			7.91"(201)	13.64"(321)	3.74"(95)
RP681-320-1000-B	320	1000		✓			7.91"(201)	13.64"(321)	3.74"(95)
RP681-320-2000-B	320	2000		✓			7.91"(201)	13.64"(321)	3.74"(95)
RP681-400-0-B	400	0		✓			7.91"(201)	13.64"(321)	3.74"(95)
RP681-400-100-B	400	100		✓			7.91"(201)	13.64"(321)	3.74"(95)
RP681-400-1000-B	400	1000		✓			7.91"(201)	13.64"(321)	3.74"(95)
RP681-400-2000-B	400	2000		✓			7.91"(201)	13.64"(321)	3.74"(95)
RP681-600-0-B	600	0			✓		7.91"(201)	13.64"(321)	3.74"(95)
RP681-600-100-B	600	100			✓		7.91"(201)	13.64"(321)	3.74"(95)
RP681-600-1000-B	600	1000			✓		7.91"(201)	13.64"(321)	3.74"(95)
RP681-600-2000-B	600	2000			✓		7.91"(201)	13.64"(321)	3.74"(95)
RP681-800-0-B	800	0				✓	7.52"(191)	16.18"(411)	4.96"(126)
RP681-800-100-B	800	100				✓	7.52"(191)	16.18"(411)	4.96"(126)
RP681-800-1000-B	800	1000				✓	7.52"(191)	16.18"(411)	4.96"(126)
RP681-800-2000-B	800	2000				✓	7.52"(191)	16.18"(411)	4.96"(126)
RP681-1000-0-B	1000	0				✓	7.52"(191)	16.18"(411)	4.96"(126)
RP681-1000-100-B	1000	100				✓	7.52"(191)	16.18"(411)	4.96"(126)
RP681-1000-1000-B	1000	1000				✓	7.52"(191)	16.18"(411)	4.96"(126)
RP681-1000-2000-B	1000	2000				✓	7.52"(191)	16.18"(411)	4.96"(126)

\*Contact factory for dimensions.

# RP681

## COMPACT HIGH CURRENT DC EMI POWER LINE FILTER, 1000V

### RP681 MECHANICAL OUTLINES (MM)



SERIES	(A)	B	C	D	E	F	G	H	I	J	K	L	M	N	O	P	Q	R	S
<b>BUS BARS (250A)</b>	12.60" (320)	7.87" (200)	3.70" (94)	6.50" (165)	9.45" (240)	7.87" (200)	4.61" (117)	0.97" (24.8)	6.24" (158.5)	0.53" (13.5)	0.39" (10)	Ø0.43",4x (Ø11.0,4x)	0.15" (4, 4x)	Ø0.39",4x (Ø10.0,4x)	0.49" (12.5)	10.83",2x (275, 2x)	0.49" (12.5)	0.39" (10)	0.34" (8.7)
<b>BUS BARS (300-600A)</b>	12.60" (320)	7.87" (200)	3.70" (94)	6.50" (165)	9.45" (240)	7.87" (200)	4.58" (116.4)	0.97" (24.8)	6.23" (158.2)	0.53" (13.5)	0.49" (12.5)	Ø0.43",4x (Ø11.0,4x)	0.23"(6, 4x) 0.31"(8, 4x)	Ø0.43",4x (Ø11.0,4x)	0.49" (12.5)	10.83",2x (275, 2x)	0.49" (12.5)	0.49" (12.5)	0.34" (8.7)
<b>BUS BARS (800-1000A)</b>	16.54" (420)	7.48" (190)	4.92" (125)	6.10" (155)	12.21" (310)	7.48" (190)	4.72" (120)	0.71" (18)	4.72" (120)	0.69" (17.5)	0.78" (20)	Ø0.43",4x (Ø11.0,4x)	0.31" (8, 4x)	Ø0.55",4x (Ø14.0,4x)	0.49" (12.5)	13.58",2x (345, 2x)	0.59" (15)	0.79" (20.0)	0.39" (10)

TYPICAL TOLERANCE: +/-0.02" (0.50MM)

\*Contact factory for dimensions.

### TYPICAL INSERTION LOSS, dB (50/50 Ohm)

Amps	Freq (MHz)	Insertion Loss (dB)					
		0.15	0.5	1.0	10	30	
250	CM (dB)	66	66	66	40	24	
	DM (dB)	40	60	45	30	28	
320	CM (dB)	66	66	66	40	24	
	DM (dB)	40	60	45	30	28	
400	CM (dB)	66	66	66	40	24	
	DM (dB)	40	60	45	30	28	
600	CM (dB)	66	66	66	40	24	
	DM (dB)	40	60	45	30	28	
800	CM (dB)	66	66	66	40	24	
	DM (dB)	40	60	45	30	28	
1000	CM (dB)	66	66	66	40	24	
	DM (dB)	40	60	45	30	28	