

RPC1158

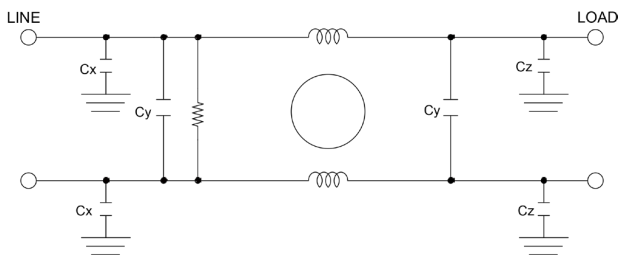
COMPACT DC POWER LINE FILTER

FEATURES

- » Rated currents include **50A**
- » Single Stage Line Filter
- » Available with **S** (studs)
- » Compact Design
- » Agency Approved to UL1283 / 60929, CSA C22.2, EN 60939
- » Y-cap value can be adjusted to fit specification



ELECTRICAL SCHEMATIC



SPECIFICATIONS

OPERATING FREQUENCY	DC 50/60Hz
USABLE FREQUENCY	DC-400Hz
MAX. OPERATING VOLTAGE	250 VAC/DC +10%
AMBIENT TEMPERATURE	-25 TO 50°C
CLIMATIC CATEGORY	40/100/21
TERMINALS (-T)	STUDS 50A (M4)

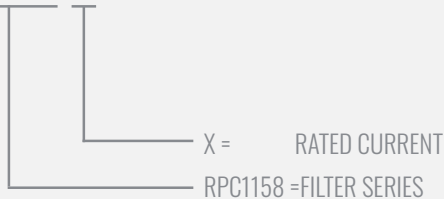
TYP. WEIGHT, LBS (KG) 0.7 (0.02)

HIPOT RATINGS

LINE TO GROUND 2700 VDC

HOW TO ORDER

RPC1158-X



NOTE: USE ANY COMBINATION OF -X (AMPS) WITH ANY -Y RATINGS

E.G. **RPC1158-50** (50AMPS)

For **X** options see product specification table.

TYPICAL APPLICATIONS

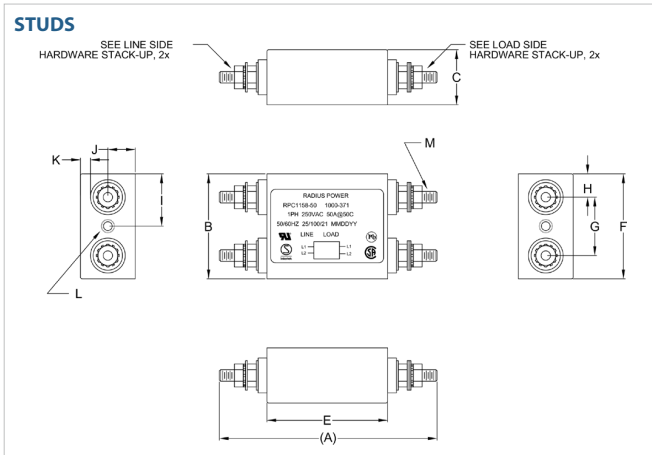
- ✓ Telecom
- ✓ Aerospace
- ✓ Military
- ✓ AC-DC converters
- ✓ Rack mount application

RPC1158

COMPACT DC POWER LINE FILTER

MODEL NO.	RATED CURRENT, A @ 40° C	TERMINAL OPTIONS			MOUNTING	MAX. DIMENSIONS" (MM)		
		(W) INPUT/OUTPUT	(S) INPUT/OUTPUT	(C) INPUT/OUTPUT		BULK HEAD	WIDTH	(LENGTH)
RPC1158-50	50		✓		✓	2.25"(57)	4.69"(119)	1.18"(30)

RPC1158 MECHANICAL OUTLINES (MM)



SERIES	(A)	B	C	D	E	F	G	H	I	J	K	L	M
STUDS	4.69" (119)	2.25" (57)	1.18" (30)	N/A	2.60" (66)	2.25" (57)	1.25" (32)	0.50" (13)	1.12" (28)	0.59" (15)	0.22" (5)	INSERT, B-632, 2x	STUD, 1/4-20, 4x

TYPICAL TOLERANCE: +/-0.02" (0.50MM)

TYPICAL INSERTION LOSS, dB (50/50 Ohm)

Amps	Freq (MHz)	0.15	0.5	1.0	10	30
50	CM (dB)	20	38	56	62	50
	DM (dB)	26	50	60	64	60