

RPT5000

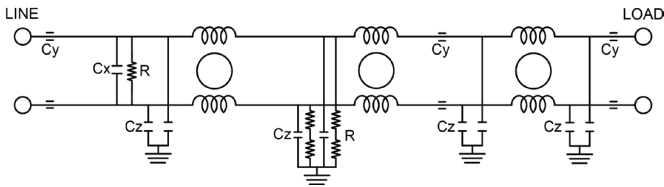
TEMPEST/COTS DC EMI POWER LINE FILTER

FEATURES

- » Rated currents include **5A, 10A, 15A, 25A and 35A**
- » Multi Stage Line Filter
- » Available with **S** (studs)
- » Agency Approved to RoHS
- » Y-cap value can be adjusted to fit specification



ELECTRICAL SCHEMATIC



SPECIFICATIONS

OPERATING FREQUENCY	DC
MAX. OPERATING VOLTAGE	400 VDC +10%
AMBIENT TEMPERATURE	-40 TO 70°C
CLIMATIC CATEGORY	40/100/21
TERMINALS (-T)	STUDS: 2-35A (M5)
TYP. WEIGHT, LBS (KG)	3.2-6(1.45-2.72)

HIPOT RATINGS

LINE TO GROUND	1500 VDC
----------------	----------

HOW TO ORDER

RPT5000 - Y - Z

Z = TERMINAL (-T)
X = RATED CURRENT

RPT5000=FILTER SERIES

NOTE: USE ANY COMBINATION OF -X (AMPS) WITH ANY -Y RATINGS

E.G. **RPT5000-5-S** (5 AMPS)

For **X** and **Y** options see product specification table.

TYPICAL APPLICATIONS

- ✓ TEMPEST/Mil-461/DO-160

NOTE:

- ✓ Call for other termination types (e.g. Circular Mil Connectors, etc.)



RPT5000

TEMPEST/COTS **DC** EMI POWER LINE FILTER

TYPICAL INSERTION LOSS, dB (50/50 Ohm)

Amps	Freq (MHz)	0.15	0.5	1.0	10	30
2	CM (dB)	100	100	100	100	100
	DM (dB)	-	-	-	-	-
10	CM (dB)	100	100	100	100	100
	DM (dB)	-	-	-	-	-
15	CM (dB)	100	100	100	100	100
	DM (dB)	-	-	-	-	-
25	CM (dB)	100	100	100	100	100
	DM (dB)	-	-	-	-	-
35	CM (dB)	100	100	100	100	100
	DM (dB)	-	-	-	-	-