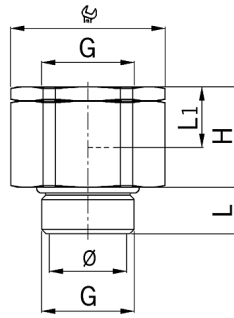


AGRO universal swivel adapter nickel-plated brass



- Attention! The swivel adapter can not replace rolling- or ball bearings!
- **Material:** Nickel-plated brass
- **Sealing rings:** NBR
- **minimal operation temperature:** -40°C
- **maximum operation temperature:** +100°C
- **Protection class:** IP 68
- **Properties:** Multifunctional use in combination with cable- or conduit glands, smooth rotation due to a special bearing
- Short entry thread metric
- **Entry thread:** M16x1.5
- **Wrench size:** 24 mm
- **Dimension H:** 20 mm
- **Dimension L:** 10 mm
- **Dimension L1:** 12
- **Diameter:** 11.0 mm

Art. No.: 2410.17

- **E-No.:** 126 398 400
- **Inner packaging:** ST
- **Outer packaging:** 25 ST
- **Individual net weight:** 53,400 G
- **Single volume:** 0,036 L
- **EAN:** 7611614189857
- **ETIM40:** EC001469