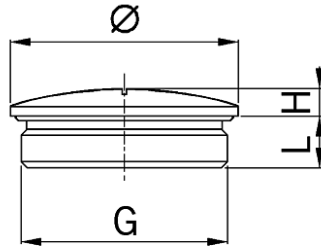


Locking plugs nickel-plated brass increased safety Ex e II



- Available on request:
 - Long entry thread
 - Locking plugs in stainless steel A2 or acid-proof stainless steel A4 with short or long metric entry thread
- **Material:** Nickel-plated brass
- **O-ring:** FPM
- **minimal operation temperature:** -60°C
- **maximum operation temperature:** +100°C
- **Protection class:** IP 66 / IP 68
- **Test standard:** IEC EN 60079-0 / IEC EN 60079-7 / IEC EN 60079-31
- **Gas:** II 2G Ex eb IIC Gb
- **Dust:** II 2D Ex tb IIC Db
- **Zone:** Gas 1 and 2 / dust 21 and 22
- **Certificate:** SEV 15 ATEX 0151
- **IECEx Certificate:** IECEx SEV 15.0018

- Locking plug MS EX
- Short entry thread metric
- with O-ring

- **Entry thread:** M10x1.5
- **Diameter:** 12 mm
- **Dimension H:** 3 mm
- **Thread length L:** 5 mm
- **Note:** 1
- 1 = Metric coarse-pitch thread (with VDE test report)

Art. No.: EX8710.08

- **E-No.:** 126 233 200
- **Inner packaging:** ST
- **Outer packaging:** 50 ST
- **Individual net weight:** 2,700 G
- **Single volume:** 0,005 L
- **EAN:** 7611614175485

- ETIM40: EC000032