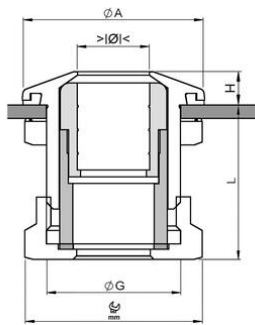
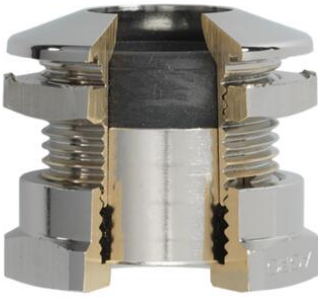


## Cable glands Progress® ultraFLAT nickel-plated brass



### Entry thread metric

- One-piece sealing insert
- not overall length insulated

<b>Order number:</b>	<b>1040.17.40.080</b>
EAN:	7611614264646
Front part	semi-bright nickel-plated brass
Push-down nut	Nickel-plated brass
Seal	TPE
Sealing washer	FPM
Operation temperature	-40°C / +100°C
Strain relief	Version A acc. to EN 62444
Wall thickness	max. 5 mm
Protection class	IP 68 (up to 10 bar) / IP 69
Entry thread	M16x1.5
Clamping range without insert min.	6.5 mm
Clamping range without insert max.	8.0 mm
Wrench size	19 mm
Diameter A	22
Dimension H	4.0 mm
Thread length L	21 mm
Dispatch	25

### Available on request:

- Stainless steel and acid resistant A4