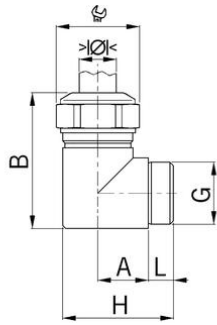


Cable glands Progress® nickel-plated brass elbow 90°



Long entry thread Pg

- Two-piece sealing insert
- not overall length insulated

Order number:	5210.16
EAN:	7611614129006
Material	Nickel-plated brass
Seal	TPE
Operation temperature	-40°C / +100°C
Protection class	IP 68
Entry thread	Pg 16
Clamping range with insert min.	8.0 mm
Clamping range with insert max.	11.0 mm
Clamping range without insert min.	11.0 mm
Clamping range without insert max.	15.0 mm
Wrench size	24 mm
Dimension H	44 mm
Thread length L	13 mm
Dimension A	16 mm
Dimension B	44 mm
Note	-
Dispatch	50

1 = One-piece sealing insert

Available with sealing inserts conformity with EN 45545 / NFPA 130. When placing an inquiry, prefix the article number by the capital F.