



THB.110.C4B

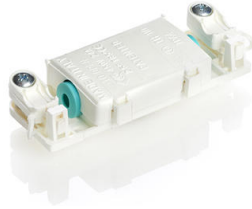
TH110 - In-out junction box IP44

MADE IN ITALY



CERTIFICATIONS AND TEST REPORTS

- ENEC CA0201777 2015-04-16 PDF • 293 KB
- CE-TH110 DOC • 142 KB



GENERAL DESCRIPTION

Type of installation	Joint connector (re-usable/re-accessible)
Type of product (Family)	TEEBOX® - IP68 Junction boxes with terminal blocks
Product name (Series)	TH110 - In-out junction box IP44
Product configuration	Junction box with terminal block
Type of Fixation	With fixing screws on flat surface
Colour	bianco
Outer dimension	75 mm x 39 mm x 13.5 mm

ELECTRICAL CHARACTERISTICS

Number of poles	2
Contact marking	L - N
Type of connection	screw (M3 - max. 0.5 Nm)
Operating current	max. 24A
Operating voltage	max. 450V AC

i Contact our Customer Service for availability of other markings.

MECHANICAL CHARACTERISTICS

Protection against solid/water (IP)	IP44
Corrosion resistance	Salt mist, 1.000 ore, 5% salt solutions, 35°C EN60068-2-11:2000, Test Ka (168h)

i Contact our Customer Service for availability of products with different IP and IK protection degrees.

CABLE CHARACTERISTICS

Wire cross-section min. - max. (Stranded cable)	0.5 mm ² - 2.5 mm ²
Wire cross-section min. - max. (Solid cable)	0.5 mm ² - 2.5 mm ²
Cable diameter min. - max.	5.0 mm - 9.0 mm <small>* For cables with diameter For smaller cables please take the proper accessory.</small>

MATERIAL CHARACTERISTICS

Body	PA68 UL94 V0 GWT 960°C
Grommets	TPE
Contacts	CuZn (nickel plated)
Screws	Steel (rivestimento Zinco)
Material properties	Halogen Free - Silicone Free
T marking	T 85°C
Operating temperature range	-40°C / +125°C
Proof Tracking Index (PTI)	PTI 250

i Contact our Customer Service for more information on additional tests and approvals.

INDUSTRY STANDARDS



Standard number	EN 60998-1:2004
------------------------	-----------------

PACKAGING INFORMATION

Packaging method	not assembled components
Quantity (product/box)	600 products/box
Unit weight	16,3 gram/product
Box dimension	600 x 270 x 400