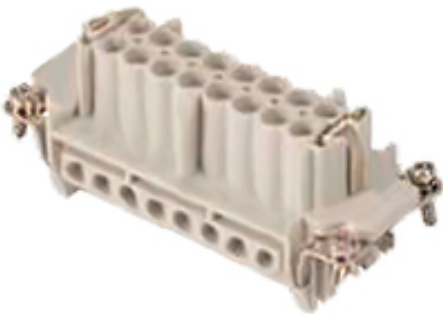


PLEASE CHECK WWW.MOLEX.COM FOR LATEST PART INFORMATION

Part Number: [0936010231](#)
Status: **Active**
Overview: [GWconnect® Heavy Duty Connectors \(HDC\)](#)
Description: [GWconnect Screw Terminal Insert, Female, 10-Pole, 16A, with Wire Protection, Silver \(Ag\) Plated Contacts, Size 10B «57x27»](#)

Documents:
[RoHS Certificate of Compliance \(PDF\)](#)

Agency Certification	
CSA	256883
UL	E249674
General	
Product Family	Industrial Connectors / Enclosures
Series	93601
Component Size	10B «57X27»
Component Type	Inserts - Screw Terminal
Insert Series	S-E
Overview	GWconnect® Heavy Duty Connectors (HDC)
Product Category	Heavy Duty Connectors
Product Name	GWconnect®
Standard	CSA C22.2 NO. 182.3, EN 60664-1, EN 61984, UL 1977
UPC	887191877891
Physical	
Durability (mating cycles max)	700
Flammability	UL 94V-0
Gender	Female
Insert Color	Grey
Material - Contact	Copper Alloy
Material - Insert	Polycarbonate
Material - Plating	Silver
Net Weight	63.000/g
Number of Rows	2
Packaging Type	Bag
Polarized to Mating Part	Yes
Poles	10
Stripping Length	7.00mm
Temperature Range - Operating	-40°C to +125°C
Tightening Test Torque	0.50 Nm
Wire Size AWG	14-20
Wire Size mm²	0.50-2.50
Electrical	
Current - Maximum per Contact	16.0A
Voltage - Maximum	500V
Wire Protection	Yes
Material Info	
Engineering Number	7310.6004.0



Series image - Reference only

EU ELV
Not Reviewed

EU RoHS Not Reviewed	China RoHS
---------------------------------------	-------------------

REACH SVHC
Not Reviewed
Halogen-Free
Status
Not Reviewed

Need more information on product environmental compliance?

Email productcompliance@molex.com
Please visit the [Contact Us](#) section for any non-product compliance questions.

China ROHS	Not Reviewed
ELV	Not Reviewed
RoHS Phthalates	Not Reviewed

Search Parts in this Series
[93601](#) Series

Mates With
[93601-0238](#) Male Screw Terminal Insert

Use With
Size 10B «57x27» Hoods and Housings