


Part number

CPF 06 N



Female insert, CP series, screw terminal connection, 6 poles + PE, 35 A 400/690 V 6 kV 3, size "77.62", black colour, with plate

Product description		Material properties	
Product type	Insert	Main material	Polycarbonate (PC)
Series	CP	Other materials	Contacts: copper alloy
Connection type	Screw terminal connection	Colour	RAL 9005 black
Gender	Female	RoHs conformity	Compliant with exemption 6(c): copper alloy containing up to 4% lead by weight
N. of poles	12 poles + 	China RoHs - EFUP	50
Size	Size 77.62	REACH SVHC substances	Yes Lead
Specification	Black colour With plate, also for non-prepared conductors	SCIP number	1a9c93ff-0445-4a16-81e3-1609ac5274d6
Technical data		Approvals / Standards	
Current	35 A	Reference standard	EN 61984:2009-06
Voltage	400 - 690 V	Certifications	CSA, CQC, DNV, BV, EAC
Rated impulse withstand voltage	6 kV	UL	ECB22
Pollution degree	3	General ordering information	
Rated voltage according to UL/CSA	600 V	EAN13 code	8015747036818
Wire cross-section	0,75 mm ² - 6,00 mm ²	eCl@ss 8.1	27440205
AWG size	18 - 10	ETIM 7.0	EC000438
Contact type	Turned silver plated	Packaging Information	
IP degree of protection	IP20 without enclosure, IP65/IP66 with enclosure	Packaging length	210,00 mm
Further technical details		Packaging height	200,00 mm
Characteristics according to EN 61984	35A 400/690V 6kV 3	Packaging width	130,00 mm
Mating cycles	≥ 500	Packaging weight	1,92 kg
Insulation resistance	≥ 10 GΩ	Packaging volume	5,46 dm ³
Contact resistance	≤ 0,5 mΩ	Packaging description	Carton box
Weight	85,30 g	Packaging quantity	20 Pcs
Operating temperature range (min, max)	-40 °C ... +125 °C	Packaging EAN code	8015747261630
UL 94 flammability rating	V-0	Sub-packaging length	87,00 mm
Torque for main contact	M4: 1,2 Nm; 10,6 lb.in (Ph1 or 0,8 x 4 mm)	Sub-packaging height	36,00 mm
		Sub-packaging width	180,00 mm
		Sub-packaging weight	0,48 kg
		Sub-packaging volume	0,56 dm ³
		Sub-packaging description	Carton tray
		Sub-packaging quantity	5 Pcs
		Sub-packaging EAN barcode	8015747036825

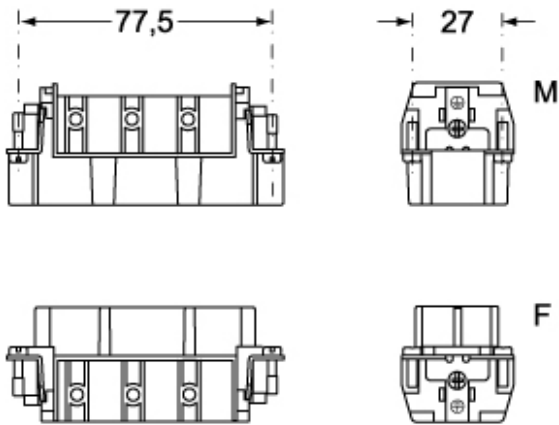
Part number

CPF 06 N

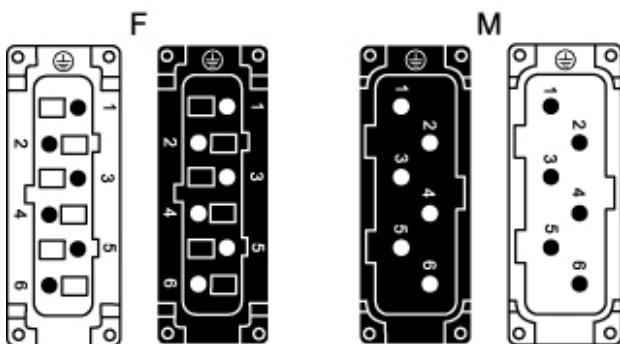


Catalogue drawings

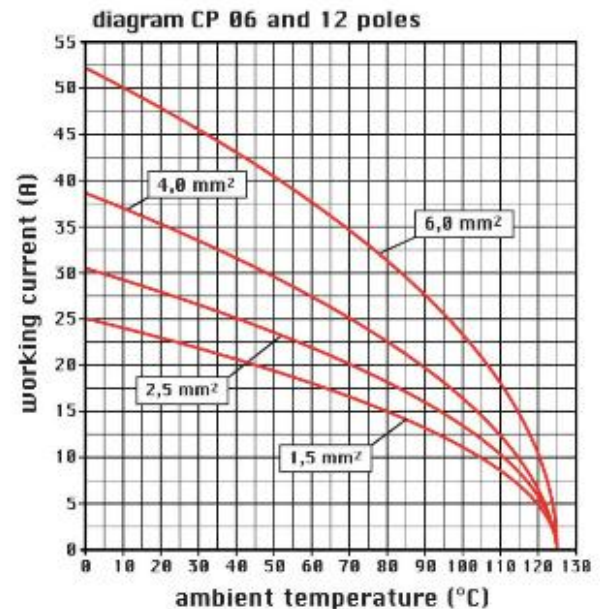
CPM 06 (N)



CPF 06 (N)



Catalogue drawings



Notes

CPF/M 06 N inserts

- characteristics according to EN 61984: 35A 400/690V 6kV 3
- UL, CSA, CCC, GOST certified
- rated voltage according to UL/CSA: 600V
- insulation resistance: > 10 GOhm
- ambient temperature limit: -40 °C ... +125 °C
- are made of self-extinguishing thermoplastic resin UL 94 V0
- mechanical life: > 500 cycles
- contact resistance: < 0,5 mOhm
- inserts with plate, for section conductors: 0.75 ÷ 6 mm² - AWG 18 ÷ 10
- conductors stripping length: 10.5 mm
- terminal screw torque: 1.2 Nm
- enclosures: size 77.27:
- C-TYPE IP65/IP66
- C7 IP67 stainless steel lever
- V-TYPE IP65/IP66 stainless steel lever
- T-TYPE IP65 insulating

- JEl zinc-plated steel lever
- BIG hoods
- W-TYPE aggressive environments
- EMC
- central lever
- IP68
- panel supports: COB

Dimensions shown in mm are not binding and may be changed without notice.

California Proposition 65 Information



WARNING

This product can expose you to lead and its compounds, known to the State of California to cause cancer and/or reproductive toxicity. For more information go to www.P65Warnings.ca.gov.

California Proposition 65 Information



WARNING

This product can expose you to lead and its compounds, known to the State of California to cause cancer and/or reproductive toxicity. For more information go to www.P65Warnings.ca.gov.
