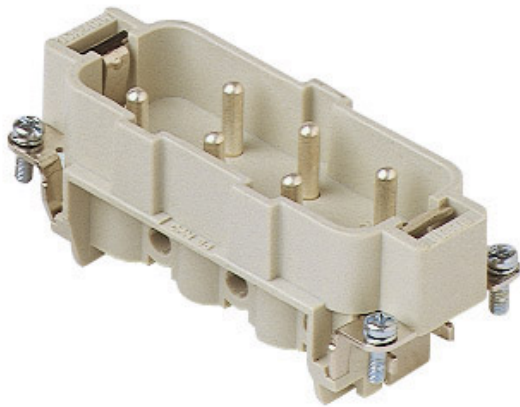



Part number

CPM 06 X



Male insert, CP series, screw terminal connection, 6 poles + PE, 35 A 400/690 V 6 kV 3, size "77.27", without plate

Product description		Material properties	
Product type	Insert	Main material	Polycarbonate (PC)
Series	CP	Other materials	Contacts: copper alloy
Connection type	Screw terminal connection	Colour	RAL 7032 grey
Gender	Male		Compliant with exemption 6(c): copper alloy containing up to 4% lead by weight
N. of poles	6 poles + 	RoHs conformity	
Size	Size 77.27	China RoHs - EFUP	50
Specification	Without plate, for prepared conductors	REACH SVHC substances	Yes Lead
Technical data		SCIP number	1a9c93ff-0445-4a16-81e3-1609ac5274d6
Current	35 A	Approvals / Standards	
Voltage	400 - 690 V	Reference standard	EN 61984:2009-06
Rated impulse withstand voltage	6 kV	Certifications	CSA, CQC, DNV, BV, EAC
Pollution degree	3	UL	ECBT2
Rated voltage according to UL/CSA	600 V	General ordering information	
Wire cross-section	0,75 mm ² - 6,00 mm ²	EAN13 code	8015747213424
AWG size	18 - 10	Packaging Information	
Contact type	Turned silver plated	Packaging length	230,00 mm
IP degree of protection	IP20 without enclosure, IP65/IP66/IP68/IP69 with enclosure	Packaging height	110,00 mm
		Packaging width	180,00 mm
		Packaging weight	1,89 kg
		Packaging volume	4,55 dm ³
Further technical details		Packaging description	Carton box
Mating cycles	≥ 500	Packaging quantity	20 Pcs
Insulation resistance	≥ 10 GΩ	Packaging EAN code	8015747213455
Contact resistance	≤ 0,5 mΩ	Sub-packaging length	87,00 mm
Weight	81,50 g	Sub-packaging height	36,00 mm
Operating temperature range (min, max)	-40 °C ... +125 °C	Sub-packaging width	180,00 mm
UL 94 flammability rating	V-0	Sub-packaging weight	0,47 kg
Torque for main contact	M4: 1,2 Nm; 10,6 lb.in (Ph1 or 0,8 x 4 mm)	Sub-packaging volume	0,56 dm ³
		Sub-packaging description	Carton tray
		Sub-packaging quantity	5 Pcs
		Sub-packaging EAN barcode	8015747213462

Part number

CPM 06 X



Notes

CPF/M 06 X inserts

- characteristics according to EN 61984:
35A 400/690V 6kV 3
- UL, CSA, CCC, GOST certified
- rated voltage according to UL/CSA: 600V
- insulation resistance: > 10 GOhm
- ambient temperature limit: -40 °C ... +125 °C
- are made of self-extinguishing thermoplastic resin UL 94 V0
- mechanical life: > 500 cycles
- contact resistance: < 0,5 mOhm
- inserts without plate, for section conductors:
0.75 ÷ 6 mm² - AWG 18 ÷ 10
- conductors stripping length: 10.5 mm
- terminal screw torque: 1.2 Nm
- enclosures: size 77.27:
C-TYPE IP65/IP66
C7 IP67 stainless steel lever
V-TYPE IP65/IP66 stainless steel lever
T-TYPE IP65 insulating
JEI zinc-plated steel lever
BIG hoods
W-TYPE aggressive environments
EMC
central lever
IP68
- panel supports: COB

Dimensions shown in mm are not binding and may be changed without notice.

California Proposition 65 Information



WARNING

This product can expose you to lead and its compounds, known to the State of California to cause cancer and/or reproductive toxicity. For more information go to www.P65Warnings.ca.gov.

California Proposition 65 Information



WARNING

This product can expose you to lead and its compounds, known to the State of California to cause cancer and/or reproductive toxicity. For more information go to www.P65Warnings.ca.gov.