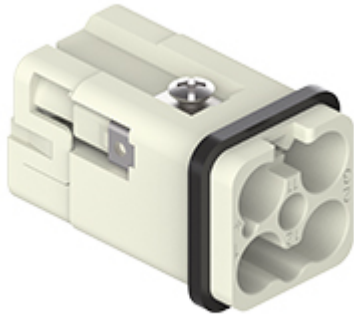


Part number

CQ4M 03/2



Male insert, CQ series, crimp connection, 3 + 2 poles + PE, 40 A 400 V 6 kV 3 / 10 A 250 V 4 kV 3, size "21.21"

Product description

| | |
|------------------------|-------------------|
| Product type | Insert |
| Series | CQ |
| Connection type | Crimp connection |
| Gender | Male |
| N. of poles | 3 poles + \perp |
| Auxiliary poles | 2 poles |
| Size | Size "21.21" |

Technical data

| | |
|--|--|
| Current | 40 A |
| Voltage | 400 V |
| Rated impulse withstand voltage | 6 kV |
| Pollution degree | 3 |
| Rated voltage according to UL/CSA | 600 V |
| IP degree of protection | IP20 without enclosure, IP65/IP66/IP68/IP69 with enclosure |

Further technical details

| | |
|---|---------------------------------------|
| Characteristics according to EN 61984 | 40 A 400 V 6 kV 3 / 10 A 250 V 4 kV 3 |
| Mating cycles | ≥ 500 |
| Insulation resistance | ≥ 10 GΩ |
| Contact resistance | ≤ 0,3 mΩ (3 poles) / ≤ 3 mΩ (2 poles) |
| Weight | 16,00 g |
| Operating temperature range (min, max) | -40 °C ... +125 °C |
| UL 94 flammability rating | V-0 |

Material properties

| | |
|------------------------|--------------------|
| Main material | Polycarbonate (PC) |
| Other materials | Gasket: NBR |
| Colour | RAL 7032 grey |
| RoHs conformity | Compliant |

Approvals / Standards

| | |
|-----------------------|--------------|
| Certifications | DNV, BV, EAC |
| UL | ECBT2, PVVA2 |
| cUL | ECBT8, PVVA8 |

General ordering information

| | |
|-------------------|---------------|
| EAN13 code | 8015747269513 |
| eCl@ss 8.1 | 27440205 |
| ETIM 7.0 | EC000438 |

Packaging Information

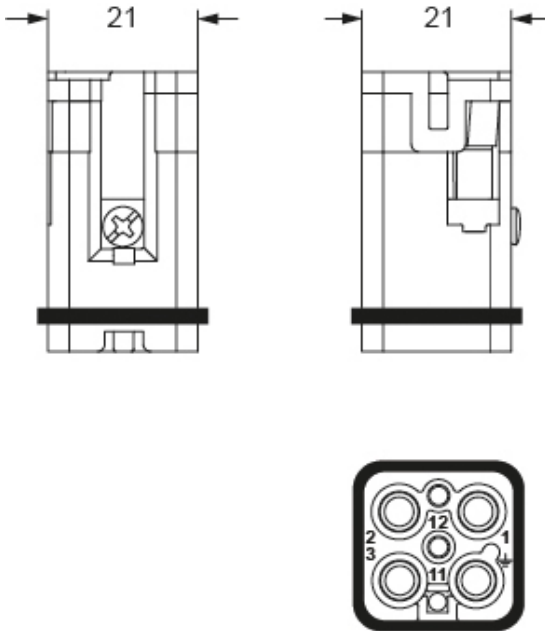
| | |
|----------------------------------|----------------------|
| Packaging length | 245,00 mm |
| Packaging height | 165,00 mm |
| Packaging width | 215,00 mm |
| Packaging weight | 3,29 kg |
| Packaging volume | 8,69 dm ³ |
| Packaging description | Carton box |
| Packaging quantity | 200 Pcs |
| Packaging EAN code | 8015747269551 |
| Sub-packaging length | 197,00 mm |
| Sub-packaging height | 35,00 mm |
| Sub-packaging width | 124,00 mm |
| Sub-packaging weight | 0,66 kg |
| Sub-packaging volume | 0,85 dm ³ |
| Sub-packaging description | Carton tray |
| Sub-packaging quantity | 40 Pcs |
| Sub-packaging EAN barcode | 8015747269568 |

Part number

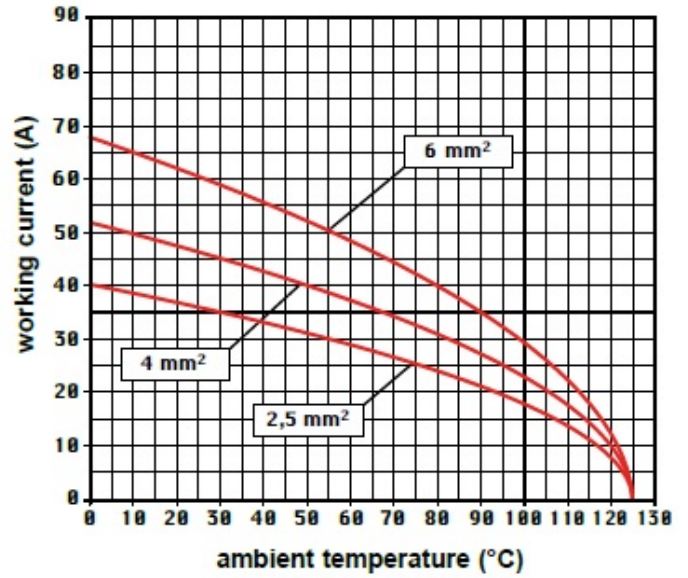
CQ4M 03/2



Catalogue drawings



Derating curves



Notes

Dimensions shown in mm are not binding and may be changed without notice.