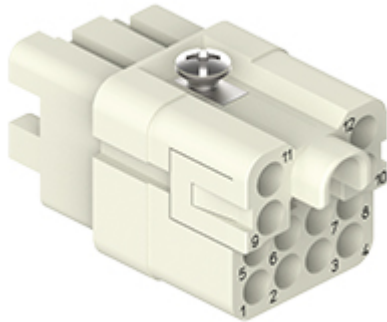



Part number

CQF 12 CIF



Female insert, CQ series, crimp connection, 12 poles + PE, 7,5 A 250 V 4 kV 3, size "21.21", for PCB adapter CIF Q12 2.4, PE contact pin diameter 1 mm

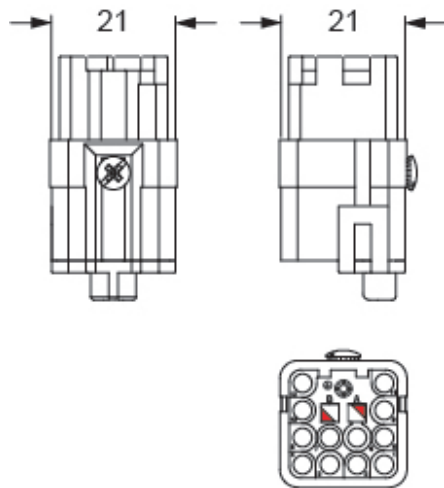
Product description		Material properties	
Product type	Insert	Main material	Polycarbonate (PC)
Series	CQ	Colour	RAL 7032 grey
Connection type	Crimp connection		Compliant with exemption 6(c): copper alloy containing up to 4% lead by weight
Gender	Female	RoHs conformity	
N. of poles	12 poles + 	China RoHs - EFUP	50
Size	Size "21.21"	REACH SVHC substances	Yes Lead
Specification	PE contact pin diameter 1 mm For PCB adapter	SCIP number	1a9c93ff-0445-4a16-81e3-1609ac5274d6
Technical data		Approvals / Standards	
Current	7 A	Certifications	DNV
Voltage	250 V	UL	ECBT2
Rated impulse withstand voltage	4 kV	cUL	ECBT8
Pollution degree	3	General ordering information	
IP degree of protection	IP20 without enclosure, IP66/IP67/IP68/IP69 with enclosure	EAN13 code	8015747270694
Further technical details		eCl@ss 8.1	27440205
Characteristics according to EN 61984	7,5 A 250 V 4 kV 3	ETIM 7.0	EC000438
Weight	12,00 g	Packaging Information	
Operating temperature range (min, max)	-40 °C ... +125 °C	Sub-packaging description	Plastic bag
		Sub-packaging quantity	1 Pcs
		Sub-packaging EAN barcode	8015747270717

Part number

CQF 12 CIF



Catalogue drawings



Notes

Dimensions shown in mm are not binding and may be changed without notice.
