

Part number

CX 03 4F



Female modular insert, Mixo series, crimp connection, 3 poles, 1 module, 40 A 400/690 V 6 kV 3

Product description

| | |
|------------------------|---|
| Product type | Modular insert |
| Series | Mixo |
| Connection type | Crimp connection |
| Gender | Female |
| N. of poles | 3 poles |
| Size | 1 module |
| Specification | Standard & HNM (High Number of Matings) |

Technical data

| | |
|--|--|
| Current | 40 A |
| Voltage | 400 - 690 V |
| Rated impulse withstand voltage | 6 kV |
| Pollution degree | 3 |
| Rated voltage according to UL/CSA | 600 V |
| IP degree of protection | IP20 without enclosure, IP65/IP66/IP68/IP69 with enclosure |

Further technical details

| | |
|---|--------------------|
| Characteristics according to EN 61984 | 40A 400/690V 6kV 3 |
| Insulation resistance | ≥ 10 GΩ |
| Contact resistance | ≤ 0,3 mΩ |
| Weight | 11,50 g |
| Operating temperature range (min, max) | -40 °C ... +125 °C |
| UL 94 flammability rating | V-0 |

Material properties

| | |
|------------------------------|---------------|
| Main material | Polycarbonate |
| Colour | RAL 7032 grey |
| RoHs conformity | Compliant |
| China RoHs - EFUP | E |
| REACH SVHC substances | No |

Approvals / Standards

| | |
|---------------------------|------------------------|
| Reference standard | EN 61984:2009-06 |
| Certifications | CSA, CQC, DNV, BV, EAC |
| UL | ECBT2 |
| cUL | ECBT8 |

General ordering information

| | |
|-------------------|---------------|
| EAN13 code | 8015747041706 |
| eCl@ss 8.1 | 27440205 |
| ETIM 7.0 | EC000438 |

Packaging Information

| | |
|----------------------------------|----------------------|
| Packaging length | 180,00 mm |
| Packaging height | 120,00 mm |
| Packaging width | 155,00 mm |
| Packaging weight | 0,90 kg |
| Packaging volume | 3,35 dm ³ |
| Packaging description | Carton box |
| Packaging quantity | 60 Pcs |
| Packaging EAN code | 8015747221177 |
| Sub-packaging length | 35,00 mm |
| Sub-packaging height | 40,00 mm |
| Sub-packaging width | 155,00 mm |
| Sub-packaging weight | 0,15 kg |
| Sub-packaging volume | 0,22 dm ³ |
| Sub-packaging description | Carton tray |
| Sub-packaging quantity | 10 Pcs |
| Sub-packaging EAN barcode | 8015747041713 |

Part number

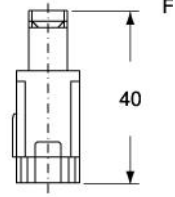
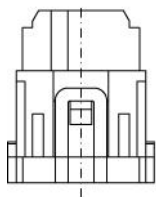
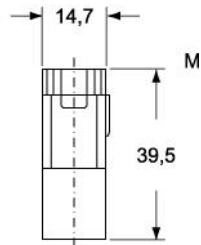
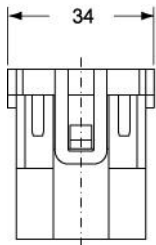
CX 03 4F



Catalogue drawings

Catalogue drawings

CX 03 4M



CX 03 4F

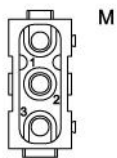
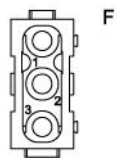
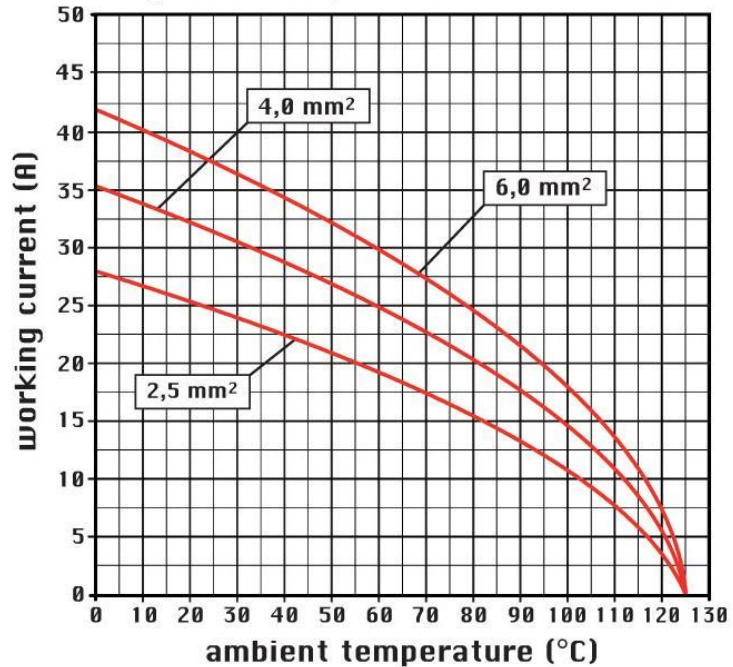


diagram CX 03 poles



Notes

STANDARD & HNM (High Number of Matings) MODULES

Standard:

-when in combination with standard contacts and standard frames (CX ... TF/TM), must be mounted either in traditional enclosures or in COB panel supports (both up to 500 matings).

HNM (High Number of Matings):

-when in combination with HNM contacts and HNM frames (RX ... TF/RM), must be mounted either in HNM enclosures (up to 10.000 matings) or in traditional enclosures with one lever (up to 5.000 matings).

Dimensions shown in mm are not binding and may be changed without notice.