

Part number

CX 03 4M



Male modular insert, Mixo series, crimp connection, 3 poles, 1 module, 40 A 400/690 V 6 kV 3

Product description		Material properties	
Product type	Modular insert	Main material	Polycarbonate
Series	Mixo	Colour	RAL 7032 grey
Connection type	Crimp connection	RoHs conformity	Compliant
Gender	Male	China RoHs - EFUP	E
N. of poles	3 poles	REACH SVHC substances	No
Size	1 module	Approvals / Standards	
Specification	Standard & HNM (High Number of Matings)	Reference standard	EN 61984:2009-06
Technical data		Certifications	CSA, CQC, DNV, BV, EAC
Current	40 A	UL	ECBT2
Voltage	400 - 690 V	cUL	ECBT8
Rated impulse withstand voltage	6 kV	General ordering information	
Pollution degree	3	EAN13 code	8015747041720
Rated voltage according to UL/CSA	600 V	eCl@ss 8.1	27440205
IP degree of protection	IP20 without enclosure, IP65/IP66/IP68/IP69 with enclosure	ETIM 7.0	EC000438
Further technical details		Packaging Information	
Characteristics according to EN 61984	40A 400/690V 6kV 3	Packaging length	180,00 mm
Insulation resistance	≥ 10 GΩ	Packaging height	120,00 mm
Contact resistance	≤ 0,3 mΩ	Packaging width	155,00 mm
Weight	13,00 g	Packaging weight	0,95 kg
Operating temperature range (min, max)	-40 °C ... +125 °C	Packaging volume	3,35 dm ³
UL 94 flammability rating	V-0	Packaging description	Carton box
		Packaging quantity	60 Pcs
		Packaging EAN code	8015747221184
		Sub-packaging length	35,00 mm
		Sub-packaging height	40,00 mm
		Sub-packaging width	155,00 mm
		Sub-packaging weight	0,16 kg
		Sub-packaging volume	0,22 dm ³
		Sub-packaging description	Carton tray
		Sub-packaging quantity	10 Pcs
		Sub-packaging EAN barcode	8015747041737

Part number

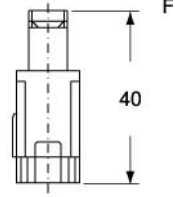
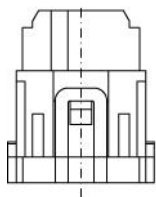
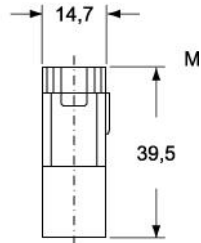
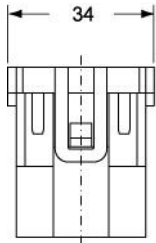
CX 03 4M



Catalogue drawings

Catalogue drawings

CX 03 4M



CX 03 4F

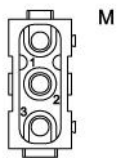
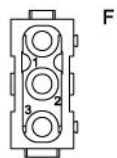
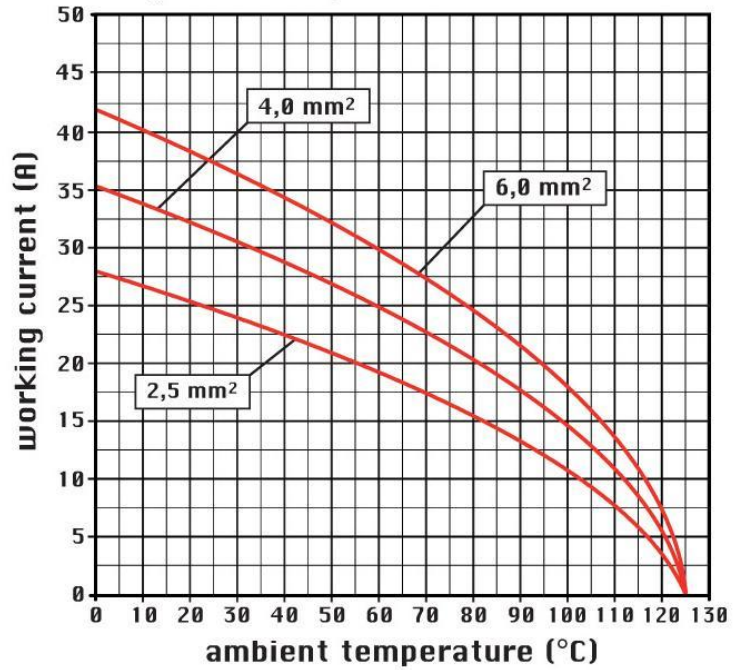


diagram CX 03 poles



Notes

STANDARD & HNM (High Number of Matings) MODULES

Standard:

-when in combination with standard contacts and standard frames (CX ... TF/TM), must be mounted either in traditional enclosures or in COB panel supports (both up to 500 matings).

HNM (High Number of Matings):

-when in combination with HNM contacts and HNM frames (RX ... TF/RM), must be mounted either in HNM enclosures (up to 10.000 matings) or in traditional enclosures with one lever (up to 5.000 matings).

Dimensions shown in mm are not binding and may be changed without notice.