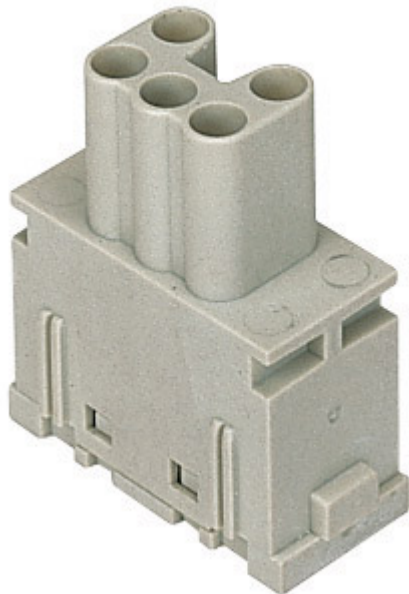


Part number

# CX 05 SF



Female modular insert, Mixo series, spring terminal connection, 5 poles, 1 module, 16 A 400 V 6 kV 3

Product description		Material properties	
<b>Product type</b>	Modular insert	<b>Main material</b>	Polycarbonate
<b>Series</b>	Mixo	<b>Colour</b>	RAL 7032 grey
<b>Connection type</b>	Spring terminal connection	<b>RoHs conformity</b>	Compliant with exemption 6(c): copper alloy containing up to 4% lead by weight
<b>Gender</b>	Female	<b>China RoHs - EFUP</b>	50
<b>N. of poles</b>	5 poles	<b>REACH SVHC substances</b>	Yes Lead
<b>Size</b>	1 module	<b>SCIP number</b>	1a9c93ff-0445-4a16-81e3-1609ac5274d6
Technical data		Approvals / Standards	
<b>Current</b>	16 A	<b>Reference standard</b>	EN 61984:2009-06
<b>Voltage</b>	400 V	<b>Certifications</b>	CSA, CQC, DNV, BV, EAC
<b>Rated impulse withstand voltage</b>	6 kV	<b>UL</b>	ECBT2
<b>Pollution degree</b>	3	<b>cUL</b>	ECBT8
<b>Rated voltage according to UL/CSA</b>	600 V	General ordering information	
<b>Wire cross-section</b>	0,14 mm <sup>2</sup> - 2,50 mm <sup>2</sup>	<b>EAN13 code</b>	8015747096041
<b>AWG size</b>	26 - 14	Packaging Information	
<b>Contact type</b>	Turned silver plated	<b>Packaging length</b>	180,00 mm
<b>IP degree of protection</b>	IP20 without enclosure, IP65/IP66/IP68/IP69 with enclosure	<b>Packaging height</b>	120,00 mm
Further technical details		<b>Packaging width</b>	155,00 mm
<b>Characteristics according to EN 61984</b>	16A 400V 6kV 3; 16A 500V 6kV 2	<b>Packaging weight</b>	1,24 kg
<b>Insulation resistance</b>	≥ 10 GΩ	<b>Packaging volume</b>	3,35 dm <sup>3</sup>
<b>Contact resistance</b>	≤ 3 mΩ	<b>Packaging description</b>	Carton box
<b>Weight</b>	17,00 g	<b>Packaging quantity</b>	60 Pcs
<b>Operating temperature range (min, max)</b>	-40 °C ... +125 °C	<b>Packaging EAN code</b>	8015747221221
<b>UL 94 flammability rating</b>	V-0	<b>Sub-packaging length</b>	35,00 mm
		<b>Sub-packaging height</b>	40,00 mm
		<b>Sub-packaging width</b>	155,00 mm
		<b>Sub-packaging weight</b>	0,21 kg
		<b>Sub-packaging volume</b>	0,22 dm <sup>3</sup>
		<b>Sub-packaging description</b>	Carton tray
		<b>Sub-packaging quantity</b>	10 Pcs
		<b>Sub-packaging EAN barcode</b>	8015747096058

Part number

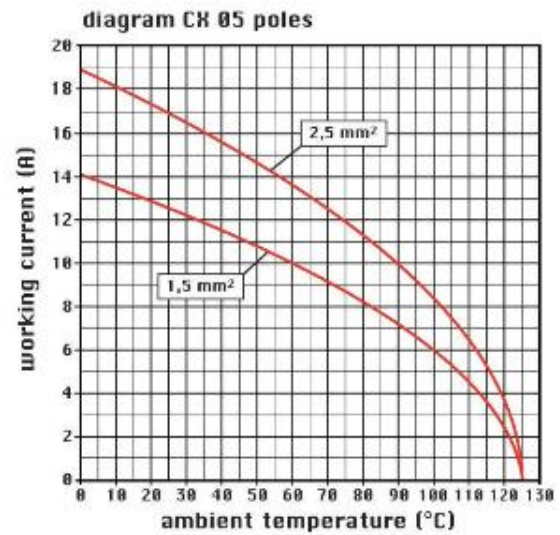
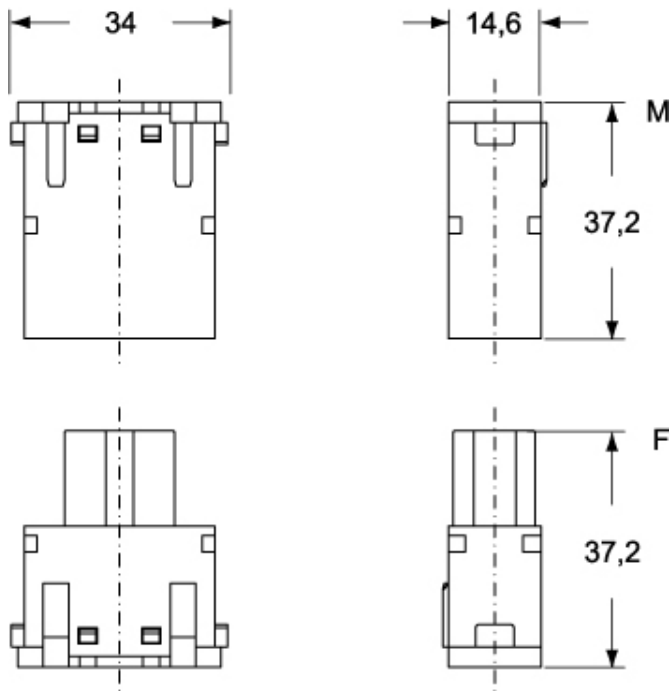
# CX 05 SF



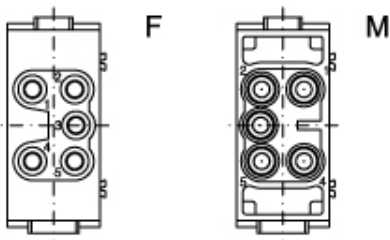
Catalogue drawings

Catalogue drawings

## CX 05 SM



## CX 05 SF



## Notes

Standard modular inserts:  
-in combination with standard contacts and standard frames (CX ... TF/TM); must be mounted either in traditional enclosures or in COB panel supports (both up to 500 matings).

Dimensions shown in mm are not binding and may be changed without notice.

## California Proposition 65 Information



### WARNING

This product can expose you to lead and its compounds, known to the State of California to cause cancer and/or reproductive toxicity. For more information go to [www.P65Warnings.ca.gov](http://www.P65Warnings.ca.gov).

---