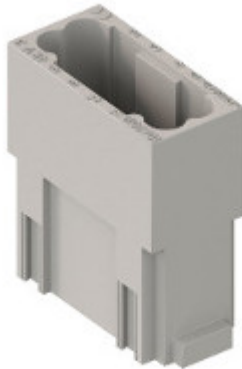


Part number

# CX 12 DM



Male modular insert, Mixo series, crimp connection, 12 poles, 1 module, 10 A 250 V 4 kV 3

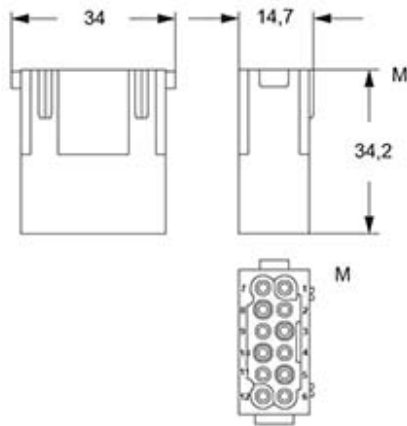
| Product description                           |  | Material properties              |                         |
|---|--|----------------------------------|-------------------------|
| <b>Product type</b>                           | Modular insert   | <b>Main material</b>             | Polycarbonate           |
| <b>Series</b>                                 | Mixo   | <b>Colour</b>                    | RAL 7032 grey           |
| <b>Connection type</b>                        | Crimp connection   | <b>RoHs conformity</b>           | Compliant               |
| <b>Gender</b>                                 | Male   | <b>China RoHs - EFUP</b>         | E                       |
| <b>N. of poles</b>                            | 12 poles   | <b>REACH SVHC substances</b>     | No                      |
| <b>Size</b>                                   | 1 module   | Approvals / Standards            |                         |
| <b>Specification</b>                          | Standard & HNM (High Number of Matings)                    | <b>Reference standard</b>        | EN 61984:2009-06        |
| Technical data                                |  | <b>Certifications</b>            | CSAc, CQC, DNV, BV, EAC |
| <b>Current</b>                                | 10 A   | <b>UL</b>                        | ECBT2                   |
| <b>Voltage</b>                                | 250 V  | <b>cUL</b>                       | ECBT8                   |
| <b>Rated impulse withstand voltage</b>        | 4 kV   | General ordering information     |                         |
| <b>Pollution degree</b>                       | 3  | <b>EAN13 code</b>                | 8015747042062           |
| <b>Rated voltage according to UL/CSA</b>      | 600 V  | <b>eCl@ss 8.1</b>                | 27440205                |
| <b>IP degree of protection</b>                | IP20 without enclosure, IP65/IP66/IP68/IP69 with enclosure | <b>ETIM 7.0</b>                  | EC000438                |
| Further technical details                     |  | Packaging Information            |                         |
| <b>Characteristics according to EN 61984</b>  | 10A 250V 4kV 3   | <b>Packaging length</b>          | 180,00 mm               |
| <b>Mating cycles</b>                          | ≥ 500  | <b>Packaging height</b>          | 120,00 mm               |
| <b>Insulation resistance</b>                  | ≥ 10 GΩ  | <b>Packaging width</b>           | 155,00 mm               |
| <b>Contact resistance</b>                     | ≤ 3 mΩ   | <b>Packaging weight</b>          | 0,76 kg                 |
| <b>Weight</b>                                 | 8,80 g   | <b>Packaging volume</b>          | 3,35 dm <sup>3</sup>    |
| <b>Operating temperature range (min, max)</b> | -40 °C ... +125 °C   | <b>Packaging description</b>     | Carton box              |
| <b>UL 94 flammability rating</b>              | V-0  | <b>Packaging quantity</b>        | 60 Pcs                  |
|   |  | <b>Packaging EAN code</b>        | 8015747221320           |
|   |  | <b>Sub-packaging length</b>      | 35,00 mm                |
|   |  | <b>Sub-packaging height</b>      | 40,00 mm                |
|   |  | <b>Sub-packaging width</b>       | 155,00 mm               |
|   |  | <b>Sub-packaging weight</b>      | 0,13 kg                 |
|   |  | <b>Sub-packaging volume</b>      | 0,22 dm <sup>3</sup>    |
|   |  | <b>Sub-packaging description</b> | Carton tray             |
|   |  | <b>Sub-packaging quantity</b>    | 10 Pcs                  |
|   |  | <b>Sub-packaging EAN barcode</b> | 8015747042079           |

Part number

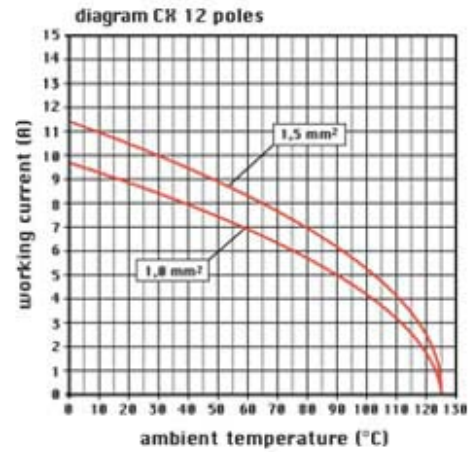
# CX 12 DM



## Catalogue drawings



## Derating curves



## Notes

### STANDARD & HNM (High Number of Matings) MODULES

#### Standard:

-when in combination with standard contacts and standard frames (CX ... TF/TM), must be mounted either in traditional enclosures or in COB panel supports (both up to 500 matings).

#### HNM (High Number of Matings):

-when in combination with HNM contacts and HNM frames (RX ... TF/RM), must be mounted either in HNM enclosures (up to 10.000 matings) or in traditional enclosures with one lever (up to 5.000 matings).

Dimensions shown in mm are not binding and may be changed without notice.