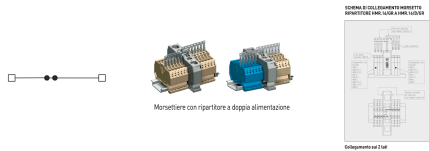
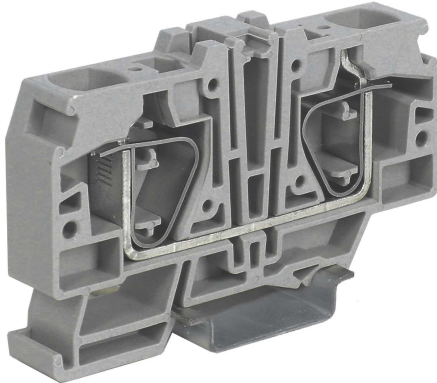
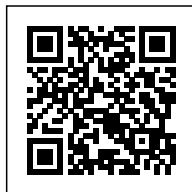


spring clamp terminal block 1 level feed-through, 16 mm<sup>2</sup>, grey



<b>Series</b>	HMR
<b>Code</b>	HM350GR
<b>Type</b>	HMR.16/GR
<b>HS code</b>	85369010
<b>Colour</b>	grey
<b>TECHNICAL FEATURES</b>	
<b>Function/Type</b>	Feed-through (distributor)
<b>Rated cross-section</b>	16 mm <sup>2</sup>
<b>Connecting capacity</b>	
<b>Flexible wire</b>	1.5-25 mm <sup>2</sup>
<b>Rigid wire</b>	1.5-25 mm <sup>2</sup>
<b>Wire with ferrule - ferrule type</b>	16 mm <sup>2</sup> - WP160/22
<b>Electrical characteristics according to IEC EN standard</b>	
<b>Maximum voltage AC/DC</b>	800 V
<b>Maximum current (rated cross-section)</b>	76 A (1)
<b>Caliber</b>	A7
<b>Electrical characteristics according to UL Standard</b>	
<b>Maximum voltage AC/DC</b>	600 V
<b>Maximum current (rated cross-section)</b>	30 A (1)
<b>Section (min-max)</b>	18-4 (AWG)
<b>Electrical characteristics according to ATEX directive and IEC Ex standard</b>	
<b>Maximum voltage AC/DC</b>	-
<b>Maximum current (rated cross-section)</b>	-
<b>Operating temperature Min/Max</b>	-
<b>Rated impulse withstand voltage / pollution degree</b>	12 kV / 3
<b>Insulation stripping length</b>	18 mm
<b>Width (pitch)</b>	12.8 mm
<b>Length</b>	80 mm
<b>Height mounted on TH35-7.5/TH35-15/G32</b>	50 / 57 / - mm
<b>Insulation material temperature index (EN 60216-1)</b>	130 °C
<b>Plastic material</b>	Polyamide UL94V-0
<b>ACCESSORIES</b>	
<b>End section</b>	
<b>Grey</b>	See tab.
<b>Blue</b>	-
<b>Thickness</b>	Vedi tabella
<b>Cross-connection</b>	
<b>Model A)</b>	See note (2)
<b>Model B)</b>	See note (2)
<b>Rated current carrying capacity IEC/ATEX</b>	See table
<b>Cross-connection identification strip</b>	-
<b>Coloured partition plate</b>	DFH/4/R (cod. DH04R)
<b>Cross-connection barrier</b>	-
<b>Test plug</b>	SDD/1 (cod. DD001)
<b>Modular test plug</b>	-
<b>End section for modular test plug</b>	-
<b>Marking</b>	
<b>Single marking tag</b>	CNU/8/51 (cod. NU0851)
<b>Single marking tag for pitch insertion</b>	-
<b>End bracket</b>	
<b>TH35 screw type</b>	BT/3 (cod. BT003)
<b>TH35 snap-fit type</b>	BTO (cod. BT007)
<b>TH35 and G32 snap-fit type</b>	BTU (cod. BT005)
<b>DIN rail according to IEC 60715/TH35</b>	-
<b>APPROVALS AND MARKINGS</b>	



\* Can be mounted together to: HMM.2/GR, HMM.2/1+2/GR, HMM.2/2+2/ GR, HMS.2/GR, HMFA.2/GR, HMM.4/GR, HMM.4/1+2/GR, HMM.4/2+2/GR, HMM.6/GR  
 1 For more details on accessories, refer to the relevant chapters 2 (1) Values refer to the terminal, not the cross-connection bridge 3 (2) The cross-connection must have an additional pole, the first pole will be connected to the distributor and the second will be eliminated from the strip of the PTC bridge. See table and illustrations for more details.

## DESCRIZIONE DEL PRODOTTO

spring clamp terminal block 1 level feed-through, 16 mm<sup>2</sup>, grey