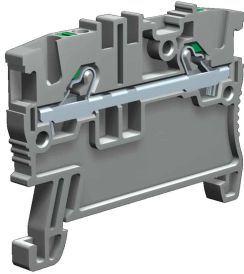
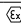
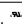
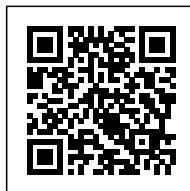


push-in terminal block 1 level feed-through, 1.5mm<sup>2</sup>, grey



<b>Series</b>	EFC
<b>Code</b>	EFC100GR
<b>Type</b>	EFC.1/GR
<b>HS code</b>	85369010
<b>Colour</b>	Grey
<b>TECHNICAL FEATURES</b>	
<b>Function/Type</b>	Feed-through
<b>Rated cross-section</b>	1.5 mm <sup>2</sup>
<b>Connecting capacity</b>	
<b>Flexible wire</b>	0.2-1.5 mm <sup>2</sup>
<b>Rigid wire</b>	0.2-1.5 mm <sup>2</sup>
<b>Wire with ferrule - ferrule type</b>	1.5 mm <sup>2</sup> - WP15/14
<b>Electrical characteristics according to IEC EN standard</b>	
<b>Maximum voltage AC/DC</b>	630 V
<b>Maximum current (rated cross-section)</b>	17.5 A
<b>Caliber</b>	A1 - B1
<b>Electrical characteristics according to UL Standard</b>	
<b>Maximum voltage AC/DC</b>	300 V
<b>Maximum current (rated cross-section)</b>	15 A
<b>Section (min-max)</b>	26-14 (AWG)
<b>Electrical characteristics according to ATEX directive and IEC Ex standard</b>	
<b>Maximum voltage AC/DC</b>	440 V
<b>Maximum current (rated cross-section)</b>	17 A
<b>Operating temperature Min/Max</b>	-40 °C / +110 °C
<b>Rated impulse withstand voltage / pollution degree</b>	6 kV / 3
<b>Insulation stripping length</b>	8 mm
<b>Width (pitch)</b>	3.5 mm
<b>Length</b>	44.9 mm
<b>Height mounted on TH35-7.5/TH35-15/G32</b>	36.5 / 44 / - mm
<b>Insulation material temperature index (EN 60216-1)</b>	130 °C
<b>Plastic material</b>	Polyamide UL94V-0
<b>ACCESSORIES</b>	
<b>End section</b>	
<b>Grey</b>	EFC.1/PT/GR (cod. EFC101GR)
<b>Blue</b>	EFC.1/PT/BL (cod. EFC101BL)
<b>Thickness</b>	1.5 mm
<b>Cross-connection</b>	EFB.1/.../... (cod. EFB01...)
<b>Rated current carrying capacity IEC/ATEX</b>	17.5 A / 16 A
<b>Coloured partition plate</b>	DFE.1+1/R (cod. DFE01R)
<b>Marking</b>	
<b>Adhesive numbering strip</b>	TMM102105AW (cod. TMM102105AW)
<b>Snap-on numbering strip</b>	TMM102105W (cod. TMM102105W)
<b>Single marking tag</b>	CNU/8/35 (cod. NU0835S), CNU/10/35 (cod. NU1035S)
<b>Single marking tag for pitch insertion</b>	CNU/8/35 (cod. NU0835S), CNU/10/35 (cod. NU1035S)
<b>End bracket</b>	
<b>TH35 screw type</b>	BT/3 (cod. BT003)
<b>TH35 snap-fit type</b>	BTO (cod. BT007)
<b>TH35 and G32 snap-fit type</b>	BTU (cod. BT005)
<b>DIN rail according to IEC 60715/TH35</b>	PR/3/..
<b>APPROVALS AND MARKINGS</b>	 



\* Reduced wiring time\* Wire release push button  
1 For more details on accessories, refer to the relevant chapters

## DESCRIZIONE DEL PRODOTTO

push-in terminal block 1 level feed-through, 1.5mm<sup>2</sup>, grey