



# Plug&Socket connector with cable clamp IP68 (TH370)

Product presentation

MADE IN ITALY

High-reliability  
electrical connections  
[www.techno.it](http://www.techno.it)

8 November 2016

© Techno s.r.l. All rights reserved.

 **techno**<sup>®</sup>  
TECHNOLOGY & INNOVATION



# The right solution to **capture energy** quickly and safely

An innovative product that allows you to get electric power quickly and in complete safety.

Our TH370 plug&socket insulation piercing connector is the winning solution for the illuminating engineering industry in terms of quality and reliability. The installation time is considerably reduced and the safety of the system is guaranteed by the degree of protection IP68 (maximum protection from dust and water).

This connector is particularly suitable for decorative lighting and illuminations.



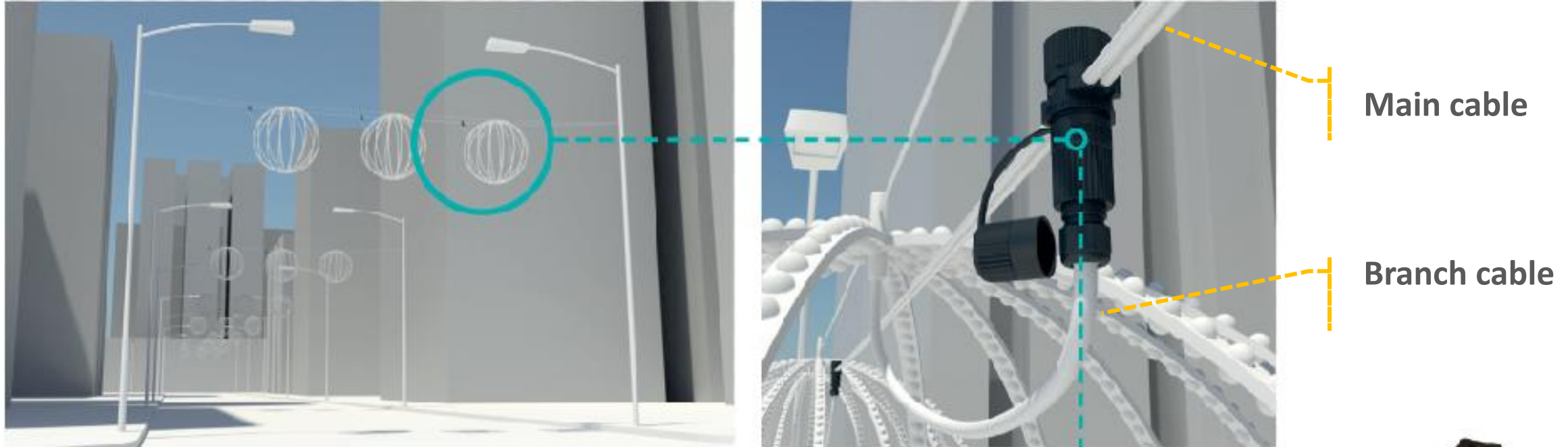
Scan the QR code to **watch the video** and  
**find out all about TH370.**

# Agenda

- The reason why
- Features & Benefits
- Example of Applications
- Targets
- Code and Technical information
- Marketing tools



# The right solution to capture energy quickly and safely

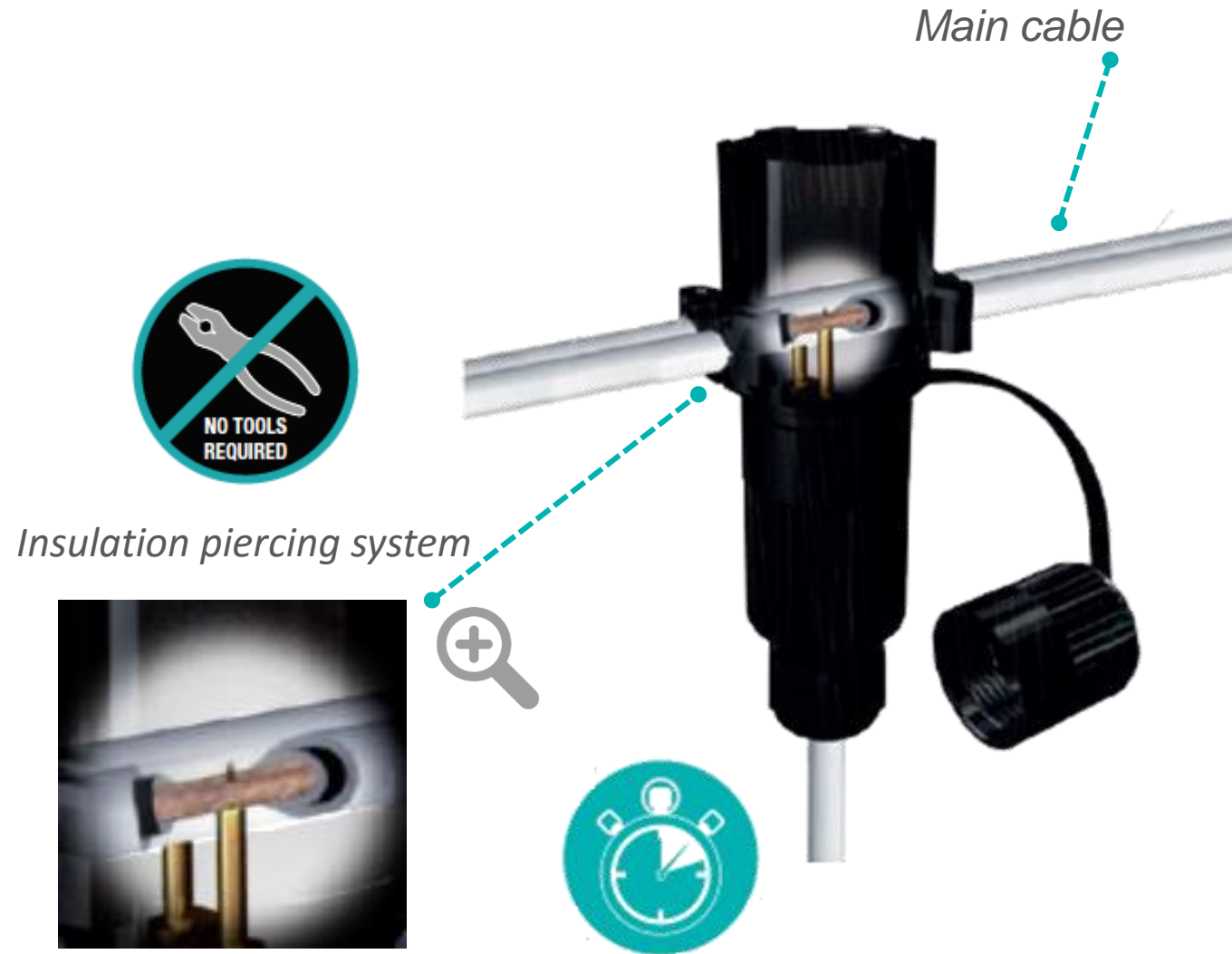


- The TH370 connector gets electric power from the main cable throughout the system. It gives power to plug&socket connectors on branch cables quickly.



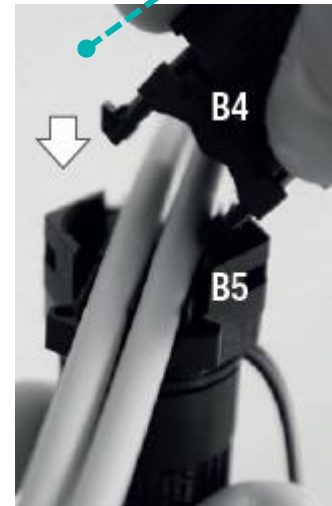
# Insulation piercing system → Installation time reduced

- **Quick:** It gets electric power from the main cable with the piercing system
- The main cable does not need to be stripped
- Main cable should be like 2-single pole cables (see figure)
- Cannot be used for electrical installations with ground cable



# Quick clamping system → Flexible

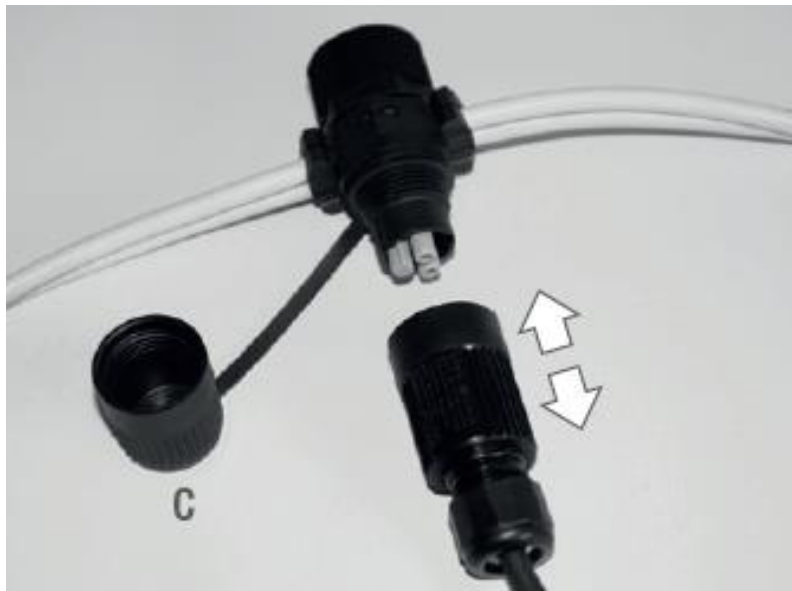
- **Intuitive:** Only few steps are needed to pierce the cable
- **Versatile:** installation at any point on the main cable (also already installed). It does not need access to the heads or cable ends
- Cable size – 2-codes:
  - THx.370.A2A for cable  $2.5 \text{ mm}^2 \div 4.0 \text{ mm}^2$  (Outer diameter:  $6.0 \text{ mm} \div 7.0 \text{ mm}$ )
  - THx.370.B2A for cable  $4.0 \text{ mm}^2 \div 6.0 \text{ mm}^2$  (outer diameter:  $7.0 \text{ mm} \div 8.0 \text{ mm}$ )
- Ideal for flexible cables for outdoor use (Tested on PVC, Neoprene and FEP cables)
- Cannot be used with solid/rigid main cable



Quick clamping system

# Plug&Socket connector → Fast installation and maintenance

- **Quick:** It gives power to plug&socket connector (TH384) on branch cables quickly
- The installation time is considerably reduced
- Useful for the installation of modular systems (pre-assembled at the factory or in the field - see p. 12)



## *Branch cable*

- *Flexible and solid*
- *Cable section:*  
 $0.5 \div 2.5 \text{ mm}^2$
- *Outer diam.:*  
 $7.0 \div 12.0 \text{ mm}$

# Maximum degree of protection IP68 → Outdoor installation

- **Reliable:** Protected against water jets (IP65) and the effects of continuous immersion in water
- **Various applications:** the weather resistance allows use in various outdoor applications
  - Used in applications where the main cable is made of 2-single pole cable
- **Tested and certified by Nemko and TÜV Rheinland**

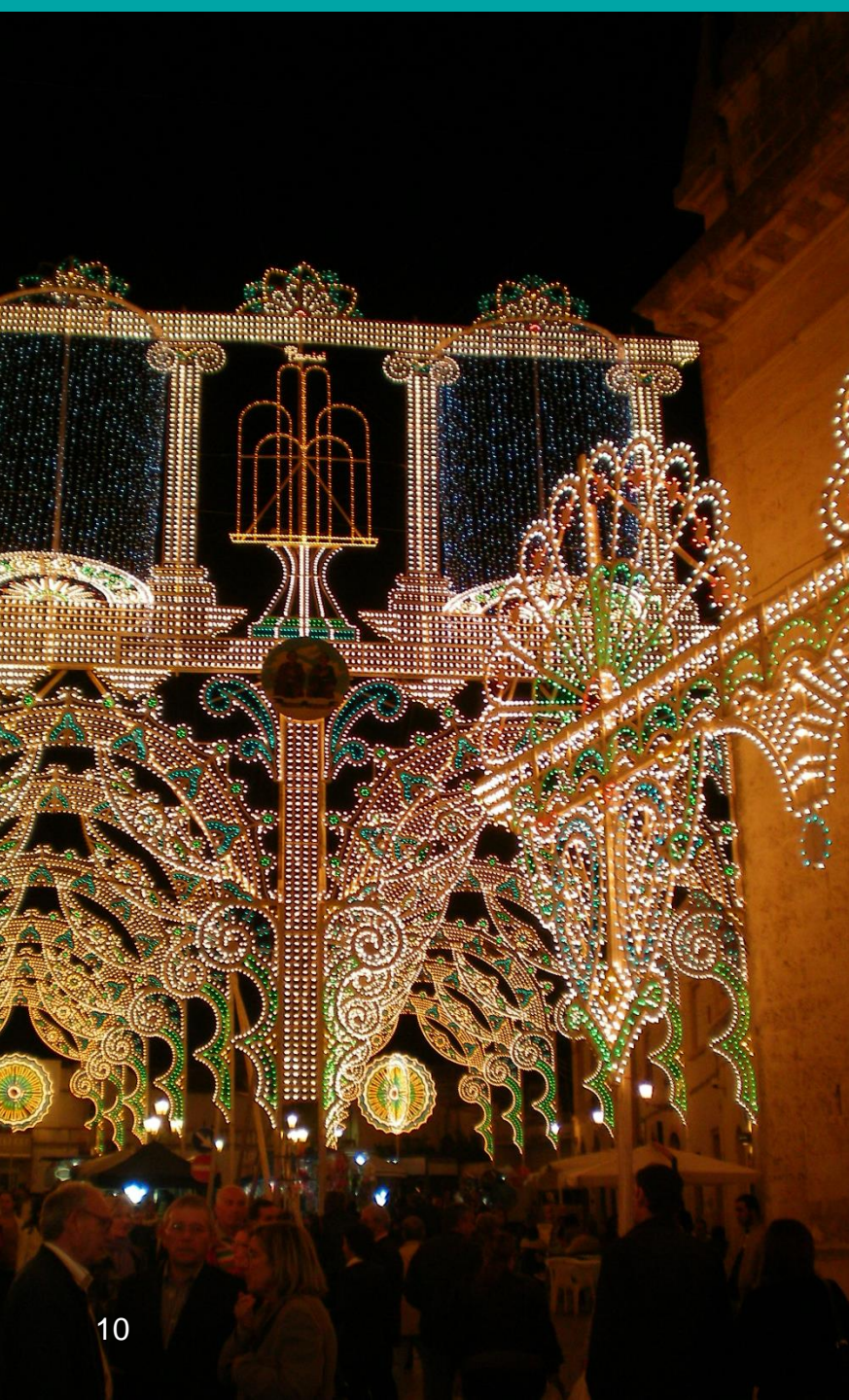




## Closure cap → It can be re-used several times

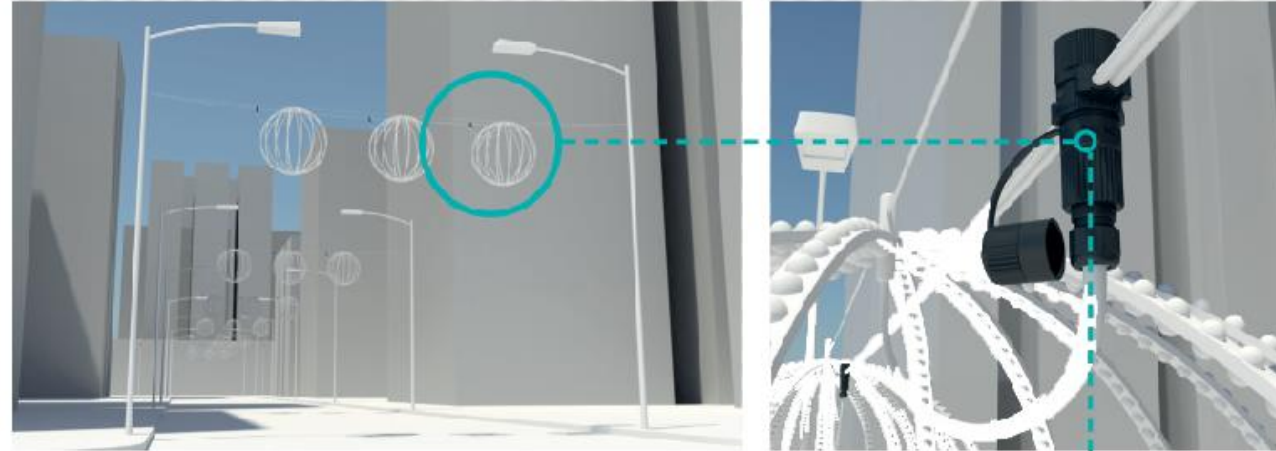
- **Flexible:** the connector is available with a closure cap to guarantee maximum flexibility of use
- The closure cap protects the connector when not in use





# Application example /1

(not exhaustive)



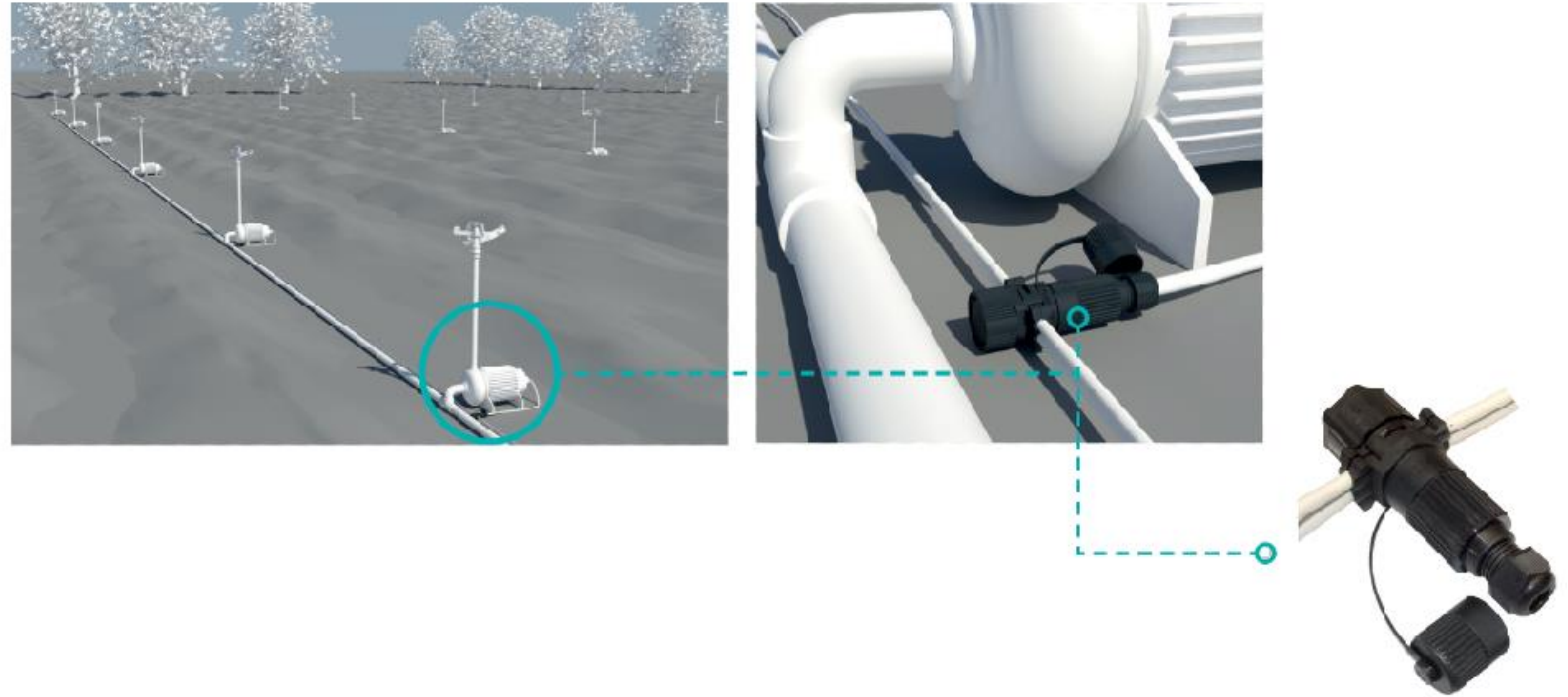
## DECORATIVE LIGHTING

- Suitable for the connection of illuminations
- Its **quick cabling and easy use** make its installation possible also in inconvenient positions



# Application example /2

(not exhaustive)



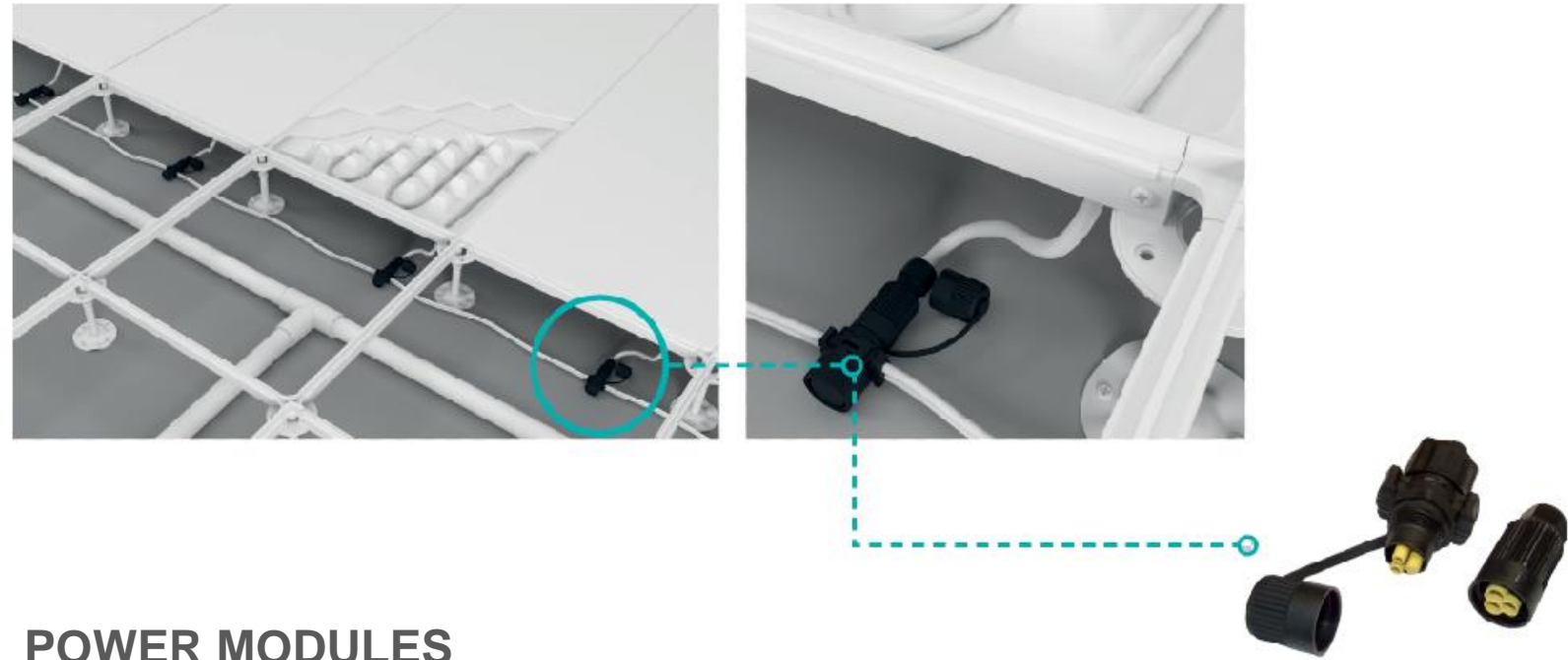
## IRRIGATION SYSTEMS

- The plug&socket connector with Cable Clamp TH370 can be used for the distribution of electricity up to 17.5A in applications where **waterproofing is fundamental to ensure the reliability of the system.**



## Application example /3

(not exhaustive)



### POWER MODULES

- Thanks to its compact dimensions the plug&socket connector with Cable Clamp TH370 facilitates the connection of modular systems even where the space provided is very small
- Wiring the main cable without tools and the branch cable with screw terminal blocks ensure flexible installation in the field by installers



# Looking for opportunities in other fields of application



## Lighting.

LED, architectural, urban, street, walkable, water submersion, events, swimming pools, trade fair stands, lighting display, stadiums.



## Installation.

Indoor/outdoor electrical installation, junction boxes, switchboards, cable trays, gate and door automation, CCTV.



## Industry.

Automation, industrial machines (wood, food and drinks, packaging, bottling, assembly, etc.), Robots, control systems, industrial cleaning, engines.

## Infrastructures.

Road, Tunnel, airport, port, underground, railway, bridge, emergency signs, dam, sports facilities, cable car.

## Transport/ Navigation.

Railway, tram, underground, navigation, shipbuilding, marine lighting, yacht, bus, caravan, light signaling, cable car.

## Energy production plants.

Wind, solar, biogas plants, inverters.



- Present the product in industrial and installation by identifying new opportunities to use it

# TEEfamily<sup>®</sup> range overview



## In-line connectors

Number poles<sup>(1)</sup>  
Wire cross-section  
Outer cable diameter<sup>(2)</sup>  
IP protection degree

## Junction connectors

### 3 ways

Number poles<sup>(1)</sup>  
Wire cross-section  
Outer cable diameter<sup>(2)</sup>  
IP protection degree

### 4 ways

Number poles<sup>(1)</sup>  
Wire cross-section  
Outer cable diameter<sup>(2)</sup>  
IP protection degree

## Fixed connectors (re-accessible)



**TH391**

2 ... 4 poles  
0.5 - 4.0 mm<sup>2</sup>  
7.0 - 13.5 mm  
IP68



**TH390**

2 ... 3 poles  
0.5 - 4.0 mm<sup>2</sup>  
7.0 - 13.5 mm  
IP68



**TH400**

2 ... 6 poles  
0.5 - 6.0 mm<sup>2</sup>  
7.0 - 20.0 mm  
IP68



**TH110**

2 ... 3 poles  
0.5 - 2.5 mm<sup>2</sup>  
5.0 - 9.0 mm  
IP44



**TH390**

2 ... 3 poles  
0.5 - 1.5 mm<sup>2</sup>  
7.0 - 13.5 mm  
IP68



**TH402**

2 ... 6 poles  
0.5 - 4.0 mm<sup>2</sup>  
7.0 - 20.0 mm  
IP68



**TH399**

2 ... 6 poles  
0.5 - 4.0 mm<sup>2</sup>  
7.0 - 20.0 mm  
IP68



**TH200**

2 ... 3 poles  
0.5 - 1.5 mm<sup>2</sup>  
7.5 - 9.5 mm  
IP67



**TH211**

2 ... 4 poles  
0.5 - 4.0 mm<sup>2</sup>  
7.0 - 17.0 mm  
IP65



**TH392**

2 ... 4 poles  
0.5 - 2.5 mm<sup>2</sup>  
7.0 - 13.5 mm  
IP68



**TH209**

2 ... 8 poles  
0.5 - 4.0 mm<sup>2</sup>  
7.0 - 14.0 mm  
IP68

## Plug&Play connectors



**TH381**

2 poles  
0.25 - 1.0 mm<sup>2</sup>  
5.0 - 7.0 mm  
IP68



**TH387**

2 ... 5 poles  
0.25 - 2.5 mm<sup>2</sup>  
7.0 - 13.5 mm  
IP68



**TH384**

2 ... 3 poles  
0.5 - 2.5 mm<sup>2</sup>  
7.0 - 12.0 mm  
IP66/IP68



**TH405**

2 ... 6 poles  
0.5 - 2.5 mm<sup>2</sup>  
7.0 - 14.0 mm  
IP68



**TH631**

2 ... 6 poles  
0.5 - 2.5 mm<sup>2</sup>  
7.0 - 14.0 mm  
IP65



**TH370**

2 poles  
2.5 - 6.0 mm<sup>2</sup>  
6.0 - 12.0 mm  
IP68



**TH623**

2 ... 3 poles  
0.5 - 2.5 mm<sup>2</sup>  
7.0 - 12.0 mm  
IP68



**TH624**

2 ... 5 poles  
0.25 - 2.5 mm<sup>2</sup>  
7.0 - 13.5 mm  
IP68



# Whom to sell



Wholesalers



Lighting OEMs



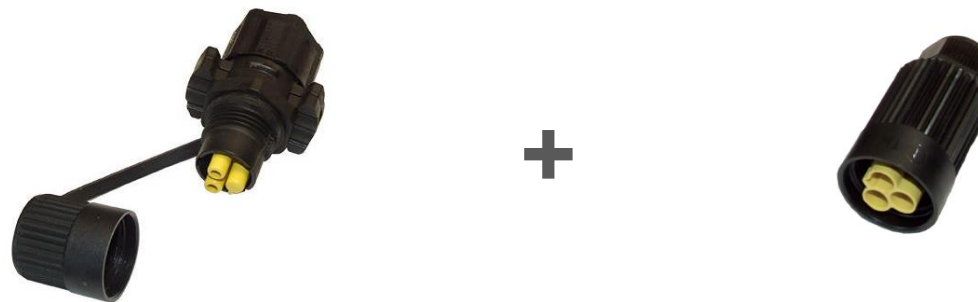
Installers



New users  
in other  
markets

# Codes

Supplied in components



Type of connectivity		
Screw terminal blocks	2 codes according to cable size  <b>THB.370.A2A</b> <b>THB.370.B2A</b>	<b>THB.384.P2A</b>
Insulation piercing contacts		<b>THP.384.P2A</b>
Crimp contacts		<b>THF.384.P2A (*)</b> <i>* Crimp not included</i>
Pieces per box	200 pieces	200 pieces
M.O.Q.	200 pieces	200 pieces

**How to order (example):**

**THB.370.A2A**

**+**

**THB.384.P2A**



# Technical information

For further information see data sheet



## Codes (2 options)

THB.370.A2A

THB.370.B2A

Technical information	THB.370.A2A	THB.370.B2A
Number of poles	2	2
Nominal current	17.5A	17.5A
Nominal Voltage	400V AC	400V AC
Impulse withstand voltage	4kV	4kV
Degree of protection IP	IP65/IP68 *  * Product tested IP68 (5m/1h) positive with cables H07RN-F 1G4/1G2.5 and cables FG7OR 1x2.5	IP65/IP68 *  * Product tested IP68 (5m/1h) positive with cables H07RN-F 1G4/1G2.5 and cables FG7OR 1x2.5

Tested and certified by Nemko and TÜV Rheinland



# Technical information

For further information see data sheet









## Codes (2 options)

THB.370.A2A

THB.370.B2A

Technical information	THB.370.A2A	THB.370.B2A
<b>Information on main cable</b> Flexible cable section min-max Cable diameter min-max	2 single-pole cable <b>2.5 mm<sup>2</sup> - 4.0 mm<sup>2</sup></b> <b>6.0 mm - 7.0 mm</b>	2 single-pole cables <b>4.0 mm<sup>2</sup> - 6.0 mm<sup>2</sup></b> <b>7.0 mm - 8.0 mm</b>
<b>Information on branch cable</b> Flexible or rigid cable section min-max Cable diameter min-max	2-poles cable 0.5 mm <sup>2</sup> - 2.5 mm <sup>2</sup> 5.0 mm - 12.0 mm	2-poles cable 0.5 mm <sup>2</sup> - 2.5 mm <sup>2</sup> 5.0 mm - 12.0 mm
Plastic materials	PA66 GF UL94 V2/V0 GWT 850°C/960°C	PA66 GF UL94 V2/V0 GWT 850°C/960°C
Gaskets	TPE-S/Silicone	TPE-S/Silicone

# Marketing tools

Tool	Printed	Download	To whom
Brochure	NO	 	All
Data sheet	NO	 	All
Installation instruction	YES	 	All
Product Display (see page 20)	YES	-	Wholesales Lighting Show-rooms Meeting rooms
Video	-	<a href="https://www.youtube.com/watch?v=8iE9YiSlukE">https://www.youtube.com/watch?v=8iE9YiSlukE</a>	All
Samples	-	Upon request	All

# Reference (Lake of Como – Italy – Christmas Lighting)





# Reference (Lake of Como – Italy – Christmas Lighting)



