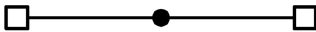
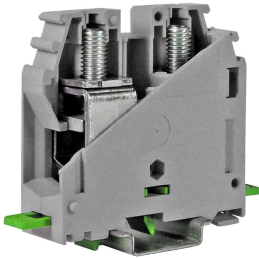

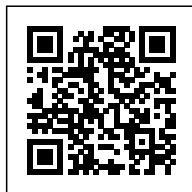


## High current terminal screw connection, 70 mm<sup>2</sup>, blue



Series	GPA
Code	GA410
Type	GPA.70 (Ex)i
HS code	85369010
Colour	Blue
<b>TECHNICAL FEATURES</b>	
Function/Type	Feed-through
Rated cross-section	70 mm <sup>2</sup>
<b>Connecting capacity</b>	
Flexible wire	10-95 mm <sup>2</sup>
Rigid wire	10-95 mm <sup>2</sup>
Wire with ferrule - ferrule type	-
<b>Electrical characteristics according to IEC EN standard</b>	
Maximum voltage AC/DC	1000 V
Maximum current (rated cross-section)	192 A
Caliber	B11
<b>Electrical characteristics according to UL Standard</b>	
Maximum voltage AC/DC	600 V
Maximum current (rated cross-section)	215 A
Section (min-max)	8-4/0 (AWG)
Tightening torque value (UL)	79.5 lb.in
<b>Electrical characteristics according to ATEX directive and IEC Ex standard</b>	
Maximum voltage AC/DC	-
Maximum current (rated cross-section)	-
Operating temperature Min/Max	-
ensione impulsiva nom. / grado di inquinamento	12 kV / 3
Insulation stripping length	25 mm
Tightening torque value (nom. / max.)	
Width (pitch)	20.5 mm
Length	91 mm
Height mounted on TH35-7.5/TH35-15/G32	70 / 78 / 75 mm
Height for panel mounting	
Lenght mounted on panel	
Fixing distance between center	
Insulation material temperature index (EN 60216-1)	130 °C
Plastic material	Polyamide UL94V-0
<b>ACCESSORIES</b>	
<b>Cross-connection</b>	
Model A)	POF/70 (cod. P0F70)
Model B)	-
Rated current carrying capacity IEC/ATEX	192 A
Multiple cross-connection bar	PMP/08 (cod. PMP08)
Shunting screw and sleeve (Standard / Exe)	CPM/70 (cod. CPM70) 12 poles
Protection cover	PRP/08 (cod. PRP08)
Coloured partition plate	DF/GPA/70/R (cod. DU070R)
Test plug socket	SDD/2 (cod. DD002) - PSD/C (cod. PD003)
<b>Marking</b>	
Single marking tag	CNU/8/51 (cod. NU0851S) - CNU/10/61 (cod. NU1061S)
<b>End bracket</b>	
TH35 screw type	BT/3 (cod. BT003)
TH35 snap-fit type	BTO (cod. BT007)
TH35 and G32 snap-fit type	BTU (cod. BT005)
<b>Mounting rail</b>	
IEC 60715/TH35	PR/3/...
IEC 60715/G32	PR/DIN/...
<b>APPROVALS AND MARKINGS</b>	
	



\* Panel mountable version with M6 screw\* GPA.70 allow to create parallel connections

## DESCRIZIONE DEL PRODOTTO

High current terminal screw connection, 70 mm<sup>2</sup>, blue