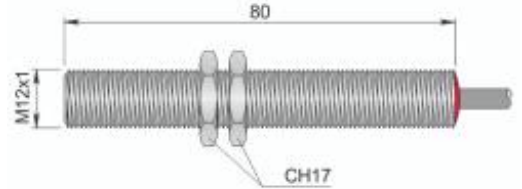




**Part number: YSM000019 - Model: SMC-12LM NO LC10 AGD3**



Dimension in mm

**TECHNICAL CHARACTERISTICS**

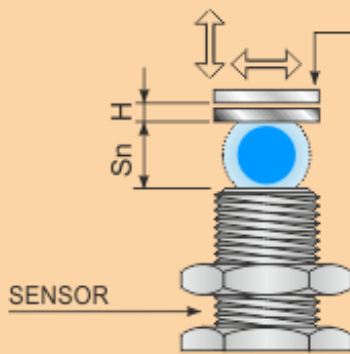
Max. switching voltage:	230 Vac/dc
Max. switching current:	1.5 A
Max. switching power:	120 W/VA
Function:	NO
Contact type:	Power reed
Max. switching frequency:	100 Hz
Contact actuation time:	4.5 mSec
Switching distance (mm):	>= 10 with M20 magnet / >= 33 with M30 magnet
Repeatability (%Sn):	± 0.3
Hysteresis (mm):	>= 6 with M20 magnet / >= 10 with M30 magnet
Operating temperature range:	-25 ÷ +70 °C
Storage temperature range:	-25 ÷ +70 °C
Maximum surface temperature:	+85 °C
Housing material:	Nickelled brass
Mechanical characteristics:	M12x1
Connection type:	Cable 10 m
IP rating:	IP 67
Cable type:	2x0.50 PVC
Explosive atmosphere type:	Mixture Air/gas and/or Air/Dust
Equipment category:	3G/3D
Installation area:	Gas: Zone 2 - Dust: Zone 22
Protection method:	Protection by encapsulation
Marking:	Gas: II 3G Ex mc IIC T6 Gc - Dust: II 3D Ex mc IIIC T85°C Dc
Conforming standard:	EN60079-0, EN60079-18, EN60947-1 and EN60947-5-1
Weight:	350 g



Part number: YSM000019 - Model: SMC-12LM NO LC10 AGD3

### WIRING DIAGRAM

#### WORKING EXAMPLE



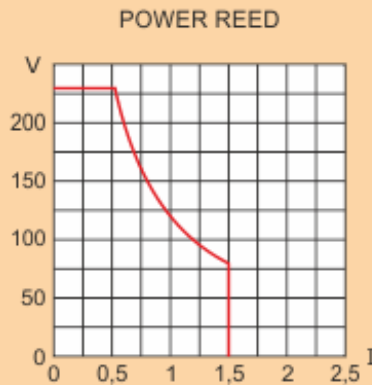
**Sn:** Sensing distance in relation to type of magnet used

**H:** differential stroke related to magnet removal

**Sn + H:** distance during removal in which contact opens

### INSTRUCTIONS FOR CORRECT INSTALLATION

#### SWITCHING POWER DIAGRAM



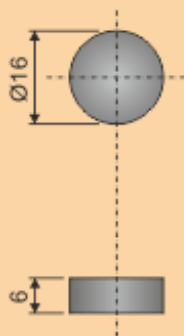
Voltage (V), switching current (I) and max. power (P) mean the max. switching instantaneous value in presence of loads.

When choosing a type of contact it is recommended that the following formula be applied:  $P = V \times I$ .

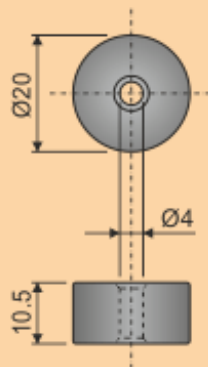
For magnetic sensors which have different technical data from shown standard ones and for the switching of inductive or capacitive loads our technical department is always at your disposal.

## MAGNET - DIMENSIONS mm

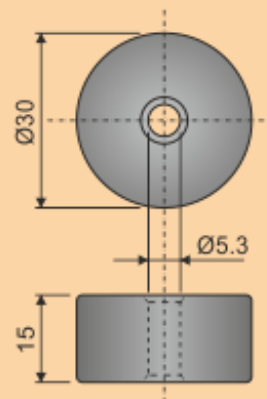
M-16  
PLASTOFERRITE



M-20  
FERRITE



M30  
FERRITE



## WIRING DIAGRAM

Standard version

