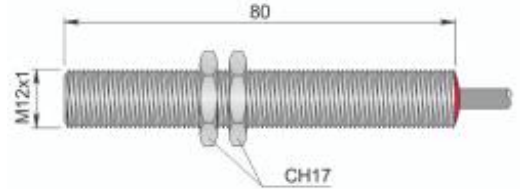




Part number: YSM000023 - Model: SMC-12 NO M1 AGD2



Dimension in mm

TECHNICAL CHARACTERISTICS

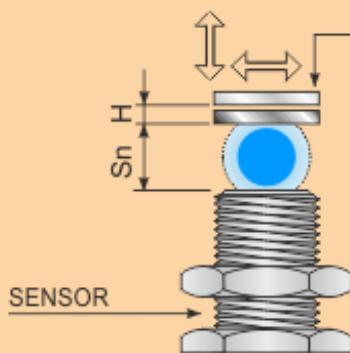
Max. switching voltage:	230 Vac/dc
Max. switching current:	1.5 A
Max. switching power:	120 W/VA
Function:	NO
Contact type:	Power reed
Max. switching frequency:	100 Hz
Contact actuation time:	4.5 mSec
Switching distance (mm):	>= 10 with M20 magnet / >= 33 with M30 magnet
Repeatability (%Sn):	± 0.3
Hysteresis (mm):	>= 6 with M20 magnet / >= 10 with M30 magnet
Operating temperature range:	-25 ÷ +70 °C
Storage temperature range:	-25 ÷ +70 °C
Maximum surface temperature:	+85 °C
Housing material:	Nickelled brass
Mechanical characteristics:	M12x1
Connection type:	Cable 2 m
IP rating:	IP 67
Cable type:	2x0.50 PVC
Explosive atmosphere type:	Mixture Air/gas and/or Air/Dust
Equipment category:	2G/2D
Installation area:	Gas: Zone 1/Zone 2 - Dust: Zone 21/ Zone22
Protection method:	Protection by encapsulation
Marking:	Gas: II 2G Ex mb IIC T6 Gb - Dust: II 2D Ex mb IIIC T85°C Db
Conforming standard:	EN60079-0, IEC60079-0, EN60079-18, IEC60079-18, EN60947-1, IEC60947-1, EN60947-5-1 and IEC60947-5-1
EU-type examination certificate - ATEX:	IMQ 12 ATEX 016 X
Certificate of Conformity (CoC) - IECEx:	IECEX IMQ 16.0014X
Weight:	100 g



Part number: YSM000023 - Model: SMC-12 NO M1 AGD2

WIRING DIAGRAM

WORKING EXAMPLE



Sn: Sensing distance in relation to type of magnet used

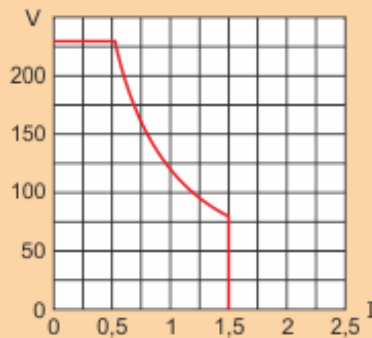
H: differential stroke related to magnet removal

Sn + H: distance during removal in which contact opens

INSTRUCTIONS FOR CORRECT INSTALLATION

SWITCHING POWER DIAGRAM

POWER REED



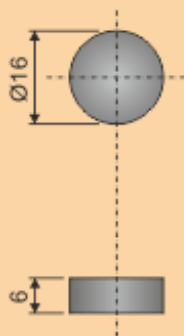
Voltage (V), switching current (I) and max. power (P) mean the max. switching instantaneous value in presence of loads.

When choosing a type of contact it is recommended that the following formula be applied: $P = V \times I$.

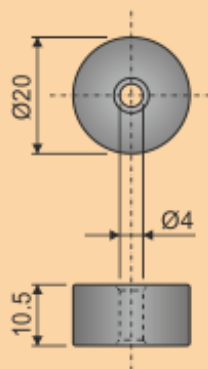
For magnetic sensors which have different technical data from shown standard ones and for the switching of inductive or capacitive loads our technical department is always at your disposal.

MAGNET - DIMENSIONS mm

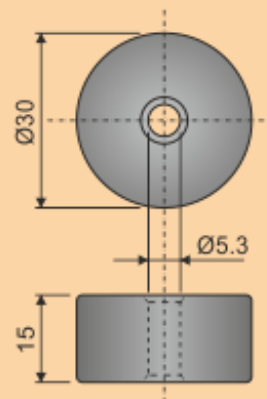
M-16
PLASTOFERRITE



M-20
FERRITE



M30
FERRITE



WIRING DIAGRAM

Standard version

