

Hour meters / timers, electronic

LCD time modules	Max. time range 9999.99 h (DC)	194
-------------------------	---------------------------------------	------------



The timer module of the type 194 for PCB mount features a 6-digit LCD display and 2 voltage ranges (4.75...15 V DC and 9...60 V DC).

It is extremely robust and suitable for many different applications thanks to its wide temperature range.



Timer



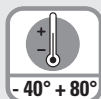
Power supply



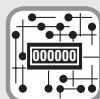
Input type



High shock resistance



Temperature range



PCB mount



LCD display



Electrical reset

Powerful

- Display range up to 9999-99 hours.
- 6-digit LCD display, 6 mm high.
- Low power consumption.
- Wide voltage and temperature range.
- Very high shock and vibration resistance.

Simple

- Non-volatile memory (no battery).
- Counting starts as soon as power supply is applied.
- Electrical reset.
- Very high reliability.
- Small size and low cost.

Order specifications

Power supply

4.75 ... 15 V DC

9 ... 60 V DC

Order no.

6.194.012.F00

6.194.012.G00

Art.-No.

162 137

162 138

Delivery specification

- LCD hour meter module type 194
- Operating instructions

Hour meters / timers, electronic

LCD time modules	Max. time range 9999.99 h (DC)	194
-------------------------	---------------------------------------	------------

Technical data

General technical data	
Display	6 digits, LCD display, figure height 6 mm [0.24"]
Display range	9999.99 h
Data backup	CMOS EEPROM non-volatile memory up to 10 years
Operating temperature	-40°C ... +85°C [-40°F ... +185°F] (non-condensing)
Working temperature	-20°C ... +80°C [-4°F ... +176°F] (non-condensing)
Storage temperature	-50°C ... +90°C [-58°F ... +194°F]

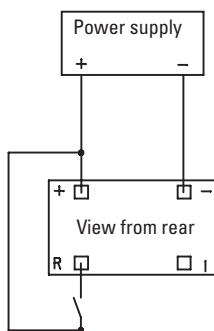
Electrical characteristics	
Power supply	...F00 4.75 ... 15 V DC, with reverse polarity protection ...G00 9 ... 60 V DC
Current consumption	...F00 8 mA at 4.75 ... 15 V DC ...G00 6 mA at 9 ... 60 V DC
EMC standards	EN 55011 class B EN 61000-6-2, EN 61000-6-3 EN 61326-1

The module must be protected against inductive voltage spikes and high energy noise interference.

Mechanical characteristics	
Housing	color black
Weight	approx. 8 g [0.28 oz]
Shock resistance acc. to DIN-IEC 68-2-27	550 m/s ² , 11 ms
Vibration resistance acc. to DIN-IEC 68-2-6	50 ... 200 m/s ² , 10 ... 80 Hz

Inputs	
Reset input	HIGH 4 ... 60 V DC LOW 0 ... 0.7 V DC pulse length min. 1 ms, edge triggered (rising)
Measuring error	a max. error of 36 sec. occur per Start/Stop cycle
Accuracy (Quarz)	max. 200 ppm 25°C [+77°F]

Terminal assignment



Dimensions

Dimensions in mm [inch]

