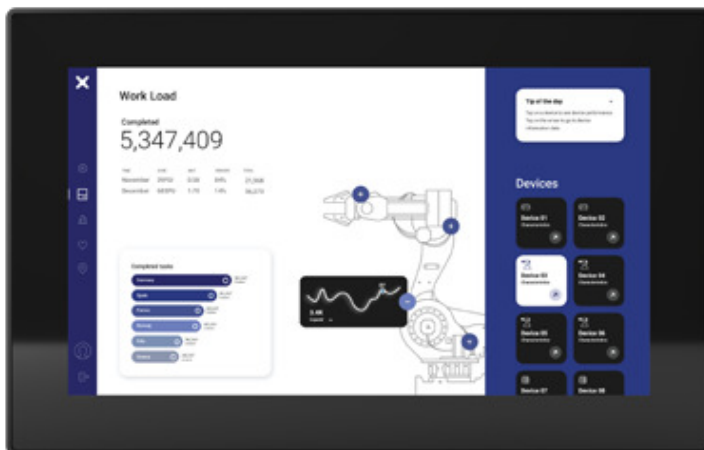


Discover the HMeX200 series

The cost-effective HMI for your IIoT challenges

Main Features

- » 5", 7", 10 and 15" touchscreen
- » Capacitive multitouch terminals support touch gestures (swiping, zooming scrolling)
- » Perfect connectivity:
 - 2 Ethernet ports (supports security), CAN and serial port
 - OPC UA
 - MQTT



The HMeX200 series combines cost-effectiveness with powerful HMI applications:

Each model is running on a 64-bit quad-core CPU to ensure perfect performance.

With their plastic case, the panels are lightweight and easily movable to meet your individual needs. At the same time, they are robust to withstand scratches, UV radiation, and chemicals thanks to their IP66 protection glass.

The In-Plane Switching technology allows a wide viewing angle up to 180 degrees resulting in sharp images that are clearly visible from all directions.



Specifications

	HMeX205	HMeX207	HMeX210	HMeX215
System resources				
Display - Colors	5" – 16.7M	7" – 16.7M	10" – 16.7M	15" – 16.7M
Resolution	800x480	1024x600	1280x800	1920x1080
Touchscreen	Projected capacitive - multitouch			
CPU	64-bit RISC quad core - 1.6GHz			
Operating system	Linux			
RAM / FLASH	4 GB / 2 GB			
RTC	Yes, RTC back-up			
Interfaces				
Ethernet	2 (10/100 Mbit)			
USB	1 (Host v. 2.0, max. 500 mA)			
Serial port	1 (RS-232, RS-485, RS-422, software configurable)			
CAN port	1 (isolated)			
Environment conditions				
Operating temperature	-20 °C to +55 °C (vertical installation) Plug-in modules and USB devices may limit the max. temperature to +50 °C			

Sales region	Telephone number
Austria	+43 223626846
Benelux and Scandinavia	+31 499 372727
Czech and Slovakia	+420 541 217 001
France	+33 1 60 13 57 57
Germany	+49 89 45 354 1000
Italy	+39 0456752711
Poland and CEE countries	+48 42 230 96 33
Spain and Portugal	+34 913293875
Switzerland	+41 417997050
United Kingdom and Ireland	+44 1908 231555

Customers from other countries may contact our European headquarters

Panasonic Industry Europe GmbH

Caroline-Herschel-Strasse 100
85521 Ottobrunn
Tel. +49 89 45354-1000
info.pieu@eu.panasonic.com
industry.panasonic.eu

Copyright © 2024 • Printed in Germany
08/24