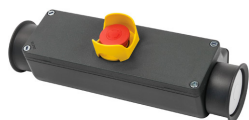


Data sheet

060CL2MA

Ergonomic two-hand control panel, grey, aluminium



Features

Range	060 Safety Control Devices
Product	Two-hand control devices
Type	Aluminium ergonomic two-hand control panel
Item code	060CL2MA
Description	Ergonomic two-hand control panel, grey, aluminium
Colour	Grey RAL7016
Weight - gr	1461,000
Custom tariff no.	85371098
GTIN	8052878050887

Technical data

Approvals	CE
Compliance with standards	IEC-ENC60947-1, IEC-EN60947-5-1
Compliance with standards	IEC-EN60529, IEC-EN60204-1, UNI-EN574, UNI-ISO13849-1
Operating temperatures	-40° ÷ +70° C
Protection degree	IP66 - IP69K (IEC-EN60529 - DIN40050)
Protection against impact	IK10 (IEC-EN62262)
Manufacturing process	Diecasting
Material	Aluminum Al Si 12
Screw material	Stainless steel AISI 304
Painting	Polyester powder coating
Operators plate material	Anodized aluminum
Rated insulation voltage	Ui 690V - Uimp 4KV (IEC-EN60947-1)
Overvoltage category	Class I (IEC-EN61140)
Pushbutton characteristics	See the single items 020PTFAR-020PTFFGR-020GE11
Safety accessory	060MCP2M - 2 hand simultaneous action controller
Warranty period	18 months

Data sheet

060CL2MA

Ergonomic two-hand control panel, grey, aluminium

Technical drawings

