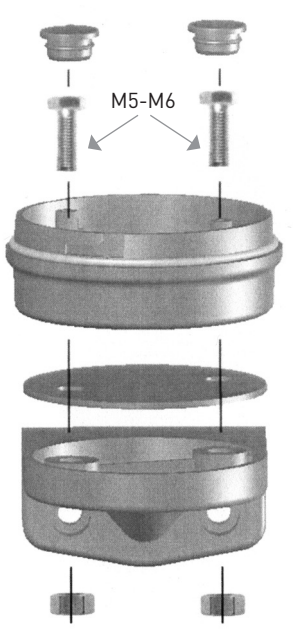
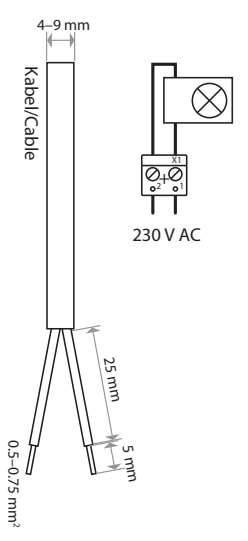
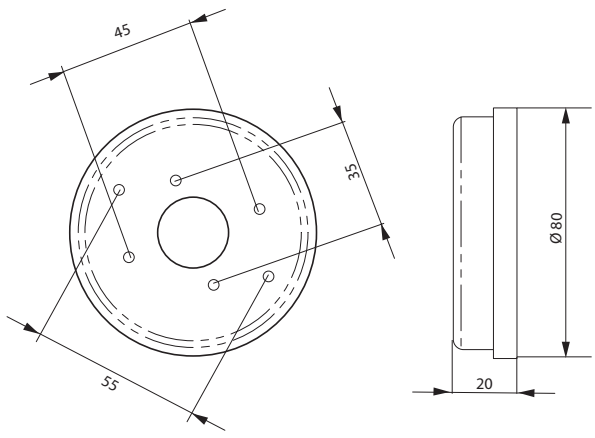


Assembly



Magnetic base



www.compro.de

# Beacon

LED-FLASHLIGHT



- PC-ABS + MPP0
- 25° to +70° C
- IP 65
- 2 Functions
- 230 V AC 50 Hz

V 1.0

**Compro**<sup>®</sup>  
Electronic GmbH

Beim Alten Flugplatz 3 · 49377 Vechta · Germany  
Tel. +49 (0) 4441 89112-50 · Fax +49 (0) 4441 89112-55

**Compro**<sup>®</sup>  
Electronic GmbH

# Beacon

LED-FLASHLIGHT

## Description

The Compro LED lights of the beacon series 50, 70 and 90 with their different adjustable functions can be used in voltage range 230 V AC. The extensive choice of accessories completes this product assortment and turns the LED-light into a highly versatile product.

## Products

<b>CO</b>	<b>BL</b>	<b>XO</b>	<b>XL</b>	<b>230</b>	<b>XF</b>
Compro	Flashlight	Size	Colour	Voltage	Function
		50 70 90	A = amber R = red G = green B = blue CL = white		2F

Order nr.	Version	Lm	Power	∅ x H mm	UB in V
CO BL 50 AL 230 2F	4 x 3 LEDs		0,5 W	61,5	220-240 V AC
CO BL 50 RL 230 2F					
CO BL 50 GL 230 2F					
CO BL 50 BL 230 2F					
CO BL 50 CL 230 2F					
CO BL 70 AL 230 2F	4 x 4 LEDs		0,7 W	74	
CO BL 70 RL 230 2F					
CO BL 70 GL 230 2F					
CO BL 70 BL 230 2F					
CO BL 70 CL 230 2F					
CO BL 90 AL 230 2F	4 x 8 LEDs		1,3 W	95,5	
CO BL 90 RL 230 2F					
CO BL 90 GL 230 2F					
CO BL 90 BL 230 2F					
CO BL 90 CL 230 2F					

Technical modifications reserved.


## Safety instructions

### 1. Intended use

The product serves as signalling and alerting device. It is designed for connection to a system voltage of 220 to 240 V/AC, 50/60 Hz. The product features a short-circuit and overload protection. The product is EMV-certified and meets the requirements of given European and national norms. The CE-conformity has been verified and the respective declaration is kept on file by the manufacturer.

For reasons of safety and approval (CE), it is not allowed to convert and/or modify the product. Other usage than described above is not allowed and can cause damage to the product. Apart from that, it may be dangerous (e.g. short-circuit, fire, electric shock). Read the instruction manual carefully and keep it for future consultation.

### 2. Safety instructions

 In case of damages due to nonobservance of the operating instructions, the warranty/guarantee is no longer valid! We do not assume liability for any secondary damages! We cannot be held responsible for material damages or personal injury, which occur due to false handling of the product or ignoring the operating instructions. In such cases any claim under guarantee is extinguished.

- Connection by qualified electrician only
- Switch off voltage before connecting and in case of damage
- Operate device only when fully assembled
- Pay attention to the correct nominal voltage
- If - by failure of the device - people are in danger or company facilities are likely to be damaged, this should be prevented by installing additional safety measures.

In this manual important instructions, which must absolutely be observed, are indicated by an exclamation mark.

### 3. Persons/Product

The product is not a toy and should be kept out of reach of children!

- Also follow the safety instructions and the operating manuals of the other devices which are connected to this product.
- The product must not be subject to intense mechanical pressure.
- The product must not be exposed to extreme temperatures, direct sunlight, strong vibrations or dampness.
- Never touch the product with wet or damp hands. There is risk of a life-threatening electric shock.
- In commercial facilities the accident prevention regulations of the employer's liability insurance association for electrical facilities are to be observed.

- Operation under adverse environmental conditions is not allowed. These conditions are:
  - in wet conditions or high humidity
  - dust and flammable gases, vapours or solvents
- The product heats up in operation. Ensure adequate ventilation;
  - the case must not be covered!
- If an operation without risk may supposedly not be guaranteed, the product must be put out of operation and be secured against accidental operation. It can be assumed that safe operation is no longer possible when:
  - there is visible damage to the product,
  - the product does no longer work and
  - after extended storage in adverse conditions or
  - after strain through transport.
- Never use the product immediately after it has been brought from a cold room into a warm one. Under adverse conditions, the condensation that has formed could damage the product. Leave the product switched off and wait until it has reached room temperature before turning it on or installing it.

### 4. Other

- The product may only be repaired by a specialist or specialist workshop.
- If you have any questions concerning the handling of the product which are not answered in this manual, our technical support is at your disposal under the following address and telephone number: see front page.

### 5. Commissioning

Connection may only be carried out by a skilled electrician!

Before connection and in case of damage the system voltage should be turned off!



Check the technical safety of the product regularly, for example, if the case is damaged. Always lay the cable in a way that nobody can trip over or get caught in them.

There is danger of injury.

### 6. Disposal

Electronic devices are recyclable material and must not be disposed of in domestic waste. Dispose of the product at the end of its service life in accordance with statutory regulations.