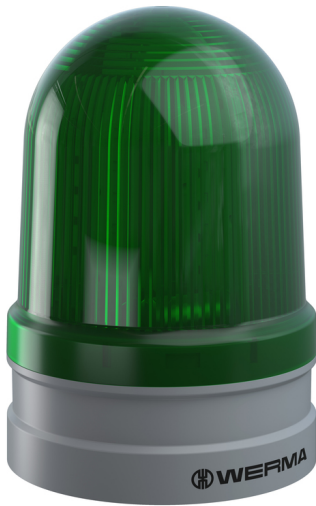


Maxi free-standing Beacons / EvoSIGNAL  
**Maxi TwinFLASH 12/24VAC/DC GN**



Part No.:	262.220.70
Series:	EvoSIGNAL Maxi



MECHANICAL DATA	
Height	173 mm
Diameter	120 mm
Materials	PC PC/ABS
Dome colour	Green
Housing colour	Grey
Protection category	IP66
Connection	Push-in terminal
cross-sectional area minimum	0,25mm <sup>2</sup> / 24AWG
cross-sectional area maximum	1,50mm <sup>2</sup> / 16AWG
Service life optical	50,000 h minimum
Working temperature minimum	-30°C
Working temperature maximum	+60°C
UL Type Rating	Type 12
Weight with packaging	505 g
Product weight	348 g

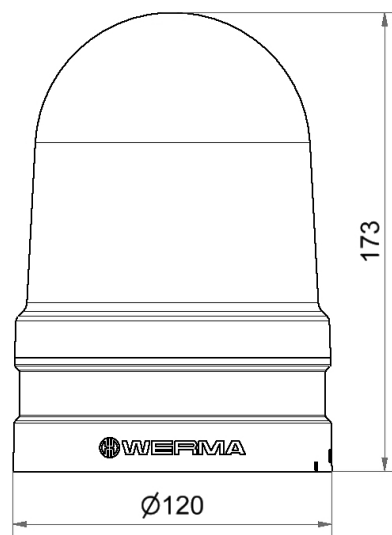
ELECTRICAL DATA	
Operating voltage	12V 24V
Operating voltage type	AC/DC
Operating voltage frequency	50Hz
Operating voltage tolerance	+/- 10%
Rated operational voltage	24 VDC
Rated operational current	760 mA
Rated inrush current	<1700 mA
Protection class	Protection class 2
Pollution degree	3
Overvoltage category	III

OPTICAL DATA	
Light source	LED
Light colour	Green
Optical signal image	EVS Flash TwinFlash
Flash frequency	1 Hz

**!** For additional installation and mounting information, refer to the appropriate user guide at [www.werma.com](http://www.werma.com). This printed copy is for information only and is subject to alteration.

## Maxi free-standing Beacons / EvoSIGNAL Maxi TwinFLASH 12/24VAC/DC GN

### DRAWING



For additional installation and mounting information, refer to the appropriate user guide at [www.werma.com](http://www.werma.com). This printed copy is for information only and is subject to alteration.