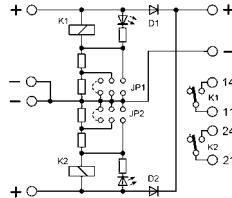


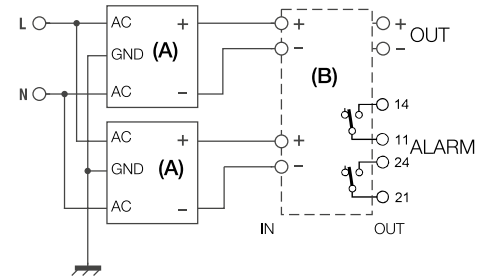
- Suitable for connecting power supplies without ORing diodes
- 12, 24 and 48 Vdc selectable operating voltages
- 2 alarm relays
- Compact dimensions



APPLICATIONS

This module is used for placing two power supplies without blocking diodes in parallel; jumpers can be used to select the desired operating voltage, and each channel has a relay and an LED diode giving you a remote alarm signal in case a power supply switches off.

Connection Diagram



(A) Power supply
(B) CSBD

CODE	XCSBD
TYPE	CSBD
INPUT TECHNICAL DATA	
Input voltage range	12-24-48 Vdc
Input nominal current	2 x 15 A
Internal protection fuse	—
OUTPUT TECHNICAL DATA	
Output voltage range	12-24-48 Vdc selectable
Continuous current	1 x 15 A (max. 30 A peak)
Overload limiting	—
Protections	—
IN-OUT voltage drop	0.7 V at 15 A
Status indication	LED "DC OK"
Alarm contact	2 dry contact, max. 1A @ 24 Vdc
GENERAL TECHNICAL DATA	
Efficiency	—
Dissipated power	—
Operating temperature range	-20...+50°C
Input / output isolation	—
Input / ground isolation	—
Output / ground isolation	—
Standard approvals	—
EMC Standards	—
Overvoltage category / Pollution degree	II / 2
Protection degree	IP 00
Connection terminal IN / OUT	2.5 mm ² / 2.5 mm ²
Housing material	UL94V-0 plastic material
Dimensions	40x130x85
Approximate weight	120 g
Mounting information	vertical on a rail, 10 mm from adjacent components
APPROVALS	
ACCESSORIES	
Mounting rail (IEC60715/TH35-7.5)	PR/3/AC, PR/3/AC/ZB, PR/3/AS, PR/3/AS/ZB
Mounting rail (IEC60715/TH35-15)	PR/3/PP, PR/3/PP/ZB, PR/3/PA, PR/3/PA/ZB
Marking tag	—