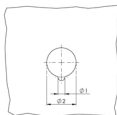
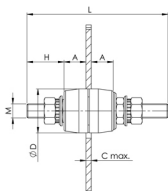


## Durchgangs-Isolator Typ PI/P



Verkleidungsbohrung

| Best.-Nr. | Verpack.-Einheit | Artikel-Gruppe | Artikel | H (mm) | D (mm) | Betriebsspannung | M (Gewinde) |
|-----------|------------------|----------------|---------|--------|--------|------------------|-------------|
| 90166     | 60               | PI/P           | 4       | 50     | 15     | 600              | M4          |
| 90167     | 40               | PI/P           | 6       | 65     | 22     | 1000             | M6          |
| 90168     | 25               | PI/P           | 8       | 80     | 25     | 1000             | M8          |
| 90169     | 20               | PI/P           | 10      | 95     | 30     | 1000             | M10         |
| 90170     | 15               | PI/P           | 12      | 105    | 35     | 1000             | M12         |
| 90171     | 8                | PI/P           | 16      | 135    | 43     | 2000             | M16         |
| 90172     | 4                | PI/P           | 20      | 155    | 54     | 2000             | M20         |



Durchgangs-Isolator Typ PI/P  
Polyestermaterial, rot

| Best.-Nr. | $\varnothing 1$ | $\varnothing 2$ | $C_{max}$ |
|-----------|-----------------|-----------------|-----------|
| 90166     | 2,0             | 8,5             | 2,0       |
| 90167     | 3,0             | 12,0            | 3,0       |
| 90168     | 3,0             | 15,0            | 4,0       |
| 90169     | 4,0             | 17,0            | 4,0       |
| 90170     | 4,5             | 20,0            | 4,0       |
| 90171     | 5,0             | 25,0            | 8,0       |
| 90172     | 5,5             | 31,0            | 10,0      |