

User Manual EMU Professional II

Document Reference: 1451

Version: 3.5

Date: 11.05.2022

Inhaltsverzeichnis

| | | |
|----------|--|-----------|
| 1 | General | 6 |
| | Safety Instructions | 6 |
| | Maintenance | 6 |
| | Disclaimer / Liability Exclusion | 6 |
| | Duties of the Customer | 6 |
| | Data Backup & Security Backup | 6 |
| | Monitoring Obligation | 6 |
| | Access Authorization | 7 |
| | Responsibility for the IT-Environment | 7 |
| | Declaration of Conformity | 7 |
| | Comments | 7 |
| 2 | Scope of Delivery and Reception Inspection | 8 |
| 3 | Product Description | 9 |
| | Versions | 9 |
| | Firmware Versions | 10 |
| | Protection against unauthorized alteration of settings | 10 |
| | Measurement Process | 11 |
| | Operation Concept | 12 |
| | Buttons | 12 |
| | Overview Front EMU Professional II | 13 |
| | Overview Laserprint Right | 14 |
| | Overview Display | 15 |
| | Compatible Devices | 16 |
| | Installation | 17 |
| 4 | Technical Data | 18 |
| 5 | Commissioning / Check-up | 20 |
| | Settings ex Factory | 20 |
| | Measurements | 20 |
| | Connection Diagram Direct Meter | 21 |
| | Connection Diagram Converter Counter | 22 |
| | Tightening Torque | 23 |
| | Spring-Cage Clamps Wire Diameter | 23 |
| | Cable Requirements for Direct Connections >65A | 23 |
| 6 | Operation | 24 |
| | Main Menu Pages | 24 |
| | Sub Menu Pages | 25 |
| | Energy | 25 |
| | Power and Current | 26 |
| | Voltage, Power Factor and Frequency | 27 |
| | Load Profile and Logbook | 27 |
| | Settings | 28 |
| 7 | Configuration Settings | 30 |
| | Tariff Change | 30 |
| | Set Number of Tariffs | 30 |
| | Real Time Clock (RTC) | 31 |
| | Configuration on the Device | 31 |
| | Configuration over External Interfaces | 31 |
| | Automatic Synchronization | 31 |
| | Configuration of Transformer Ratio | 32 |
| | S0 Pulse Ratio | 32 |
| | S0 Impulse Duration | 32 |

| | |
|---|-----------|
| Configuration of the Energy Display | 33 |
| Energy per Tariff: | 33 |
| Energy per Phase: | 33 |
| Overview | 33 |
| 8 Configuration Interfaces | 34 |
| Interfaces | 34 |
| M-Bus | 34 |
| Settings ex Factory | 34 |
| Connection Diagram M-Bus | 34 |
| Configuration of the Primary Address on the Device | 35 |
| Configuration of the Secondary Address on the Device | 35 |
| Configuration of the Baud Rate on the Device | 35 |
| Configuration via MB-Connect | 35 |
| S0 Pulse Output | 36 |
| Settings ex Factory | 36 |
| Connection Diagram S0 Pulse Output | 36 |
| Configuration Type of Read-Out | 36 |
| Configuration of the Pulse Rate | 37 |
| Configuration of the Pulse Duration | 37 |
| Data Available for Read-Out | 37 |
| TCP/IP | 37 |
| Settings Ex-Factory | 37 |
| Connection Diagram TCP/IP | 38 |
| Configuration and Access | 38 |
| ModBus RTU, ModBus TPC/IP | 38 |
| LoRa | 38 |
| Ex Factory | 38 |
| Configuration and Access | 38 |
| 9 In Case of Errors | 39 |
| Possible Errors after Installation | 39 |
| Wrong Meter Readings on the Converter Counter | 39 |
| Behavior with Export and Import | 39 |
| The EMU Professional II Sends Wrong Information on the S0 Interface | 39 |
| Tariff Change Does Not Work | 40 |
| The "L123" Display Constantly Blinks | 40 |
| Error Codes | 40 |
| 10 Extended Information for Load Profile According to PTB-A 50.7 | 41 |
| Measurement Correctness Note | 41 |
| Auflagen für den Verwender im Sinne des § 23 der Mess- und Eichverordnung | 41 |
| Transparenz der Verwendung | 41 |
| Tarifierung | 41 |
| Fehlermeldungen/Uhrzeitverstellungen | 42 |
| Verwendung der Kommunikationsschnittstellen | 42 |
| Zeitsynchronisierung | 42 |
| Messergebnisse, die nicht für Verrechnungszwecke verwendet werden dürfen | 42 |
| Logbuchfunktion | 42 |
| EMU Professional II | 42 |
| CT Ratio and VT Ratio | 43 |
| Real Time Clock | 43 |
| S0 Impulse Output | 43 |
| Use for Billing Purposes | 43 |
| Description | 43 |
| Interval of Recording | 44 |
| Time Synchronization | 44 |
| Tariff Changes | 46 |
| External Read-out over Interfaces | 46 |
| Memory Capacity | 46 |

| | |
|--|----|
| Power Failure and Reboot | 46 |
| Display Load Profile | 47 |
| Display Logbook | 47 |
| In Case of a Time Adjustment | 48 |
| In Case of a Ratio Adjustment | 48 |
| In Case of a Impulse Duration Adjustment | 49 |
| In Case of a Impulse Rate Adjustment | 49 |

| Doc. Ref | Version | Revision Date | Token | Company | Changes |
|----------|---------|---------------|-------|-------------------|---|
| 1452 | V1.0 | 25.01.2021 | met | EMU Electronic AG | Creation of document |
| 1452 | V2.0 | 02.02.2021 | met | EMU Electronic AG | Structuring, completion |
| 1452 | V2.1 | 18.02.2021 | met | EMU Electronic AG | Improvements of Translation, Clean up |
| 1452 | V2.2 | 23.03.2021 | met | EMU Electronic AG | Supplemental information for load profile PTB-A 50.7 |
| 1452 | V2.4 | 24.03.2021 | met | EMU Electronic AG | “Messrichtigkeitshinweise” added |
| 1452 | V2.5 | 12.04.2021 | met | EMU Electronic AG | Customer responsibilities added |
| 1452 | V2.6 | 24.06.2021 | met | EMU Electronic AG | Added: TCP/IP Interface, Update: Number of available Logbook and load profile entries |
| 1452 | V2.7 | 25.06.2021 | met | EMU Electronic AG | Addition NTP error, fixed error TNP -> NTP, updated notes for S0, converter ratios and RTC |
| 1452 | V2.8 | 01.07.2021 | met | EMU Electronic AG | restructuring of interfaces. Interfaces have their own document now. Added annotation to new document |
| 1452 | V2.9 | 22.07.2021 | met | EMU Electronic AG | Aligning with german version. Picture renewal. Tariff note for 4 tariffs. Adjustment of S0 Output |
| 1452 | V3.0 | 21.09.2021 | met | EMU Electronic AG | Added further warnings regarding converter counter |
| 1452 | V3.1 | 30.09.2021 | met | EMU Electronic AG | Improved safety instructions. Revamp of NTP, TNV & TNS |
| 1452 | V3.2 | 10.12.2021 | met | EMU Electronic AG | PTB: Rebootcase added |
| 1452 | V3.3 | 06.04.2022 | met | EMU Electronic AG | Information on spring-cage clamps specified. Updated LoRa interface |
| 1452 | V3.4 | 13.04.2022 | fbo | EMU Electronic AG | added further information about energy direction (display) |
| 1451 | V3.5 | 11.05.2022 | met | EMU Electronic AG | Rework of Doc.Ref numbers. Same document in different language no longer has a different Doc.Ref number |

General

Safety Instructions

Please read this user manual as well as all other supplementary documents for the EMU Professional II carefully.



Please pay special attention to the safety instructions and warnings when using the EMU Professional II and this user manual. Nonobservance can lead to massive damage to persons and property.

Please respect the given electrical, mechanical and other boundaries of the EMU Professional II. Nonobservance of these boundaries can lead to massive damage to persons and property.

Unauthorized changes to the EMU Professional II voids all warranties and precludes any and all rights for compensation on the part of EMU Electronic AG in case of damage.

The usual local security and work rules must be observed. The installation of the meter must be carried out by qualified and trained personnel. Please read the installation instructions carefully.

The following symbols indicate areas where special attention is necessary:

-  This symbol combined with the word "Note:" is used to describe important information, an important procedure or handling.
-  This symbol indicates a potentially very dangerous situation where damage to persons and property could occur if these warnings are not heeded.

Maintenance

The EMU Professional II is maintenance free. In case of damages (for example shipping, incorrect connection or storage) repairs may only be done by EMU Electronic AG.

Disclaimer / Liability Exclusion

The choice of the EMU energy meter and determination of the suitability of the meter type for a particular purpose are solely the responsibility of the buyer. EMU Electronic takes no responsibility for this.

Data / information in catalogs and data sheets do not promise special properties, but are determined by experience and measurements.

Liability for damages caused by improper operation / projecting or malfunction of the energy meter is excluded. The operator/ project engineer has to take care that improper operation/ planning and malfunctions can not cause further damage. For defects or damage caused by improper use of the EMU energy meter or by not following the manual, no warranty is given.

Duties of the Customer

Data Backup & Security Backup

The customer is responsible for a suitable data backup regardless of the type of installation of the EMU Professional II energy meter. The risks and costs of operation rest with the customer. EMU can help with developing possible concepts for operation within the scope of further services.

The responsibility for establishing the required read-out and security-backups for safe operations rests with the customer. The security-backups must be stored securely by the customer.

Monitoring Obligation

The customer is obligated to monitor the energy meters to identify outages of measuring points immediately, 24h later at the latest.

Access Authorization

The customer is responsible for the technical and organizational security against third-party involvement of the EMU Professional II.

Responsibility for the IT-Environment

The customer is responsible for their IT-environment as well as the safeguarding of it's access.

It is brought to the customers attention that the EMU Professional II energy meter as well as it's FW-Updates (Firmware) have certain system requirements. It is the responsibility of the customer to conform to these requirements. It is the exclusive responsibility of the customer to provide the necessary hardware and personnel required for the EMU-Firmware.

The customer is advised to take precautions in case of partial or full failure of the EMU Professional II energy meter (e.g. daily backups, interference diagnosis, regular examination of measurements, contingency plans). It is their sole responsibility to provide necessary infrastructure and ensure functionality of the work environment and it's technical capability.

The initial system requirements can change during operation or due to an update. The customer is responsible for keeping themselves up to date on these requirements and to ensure system compatibility before installing updates.

A daily read-out and archiving of load-profiles for the EMU Professional II LP is required.

Declaration of Conformity

For our full declaration of conformity for the EMU Professional II please refer to the document "Declaration of conformity d f e 2020.pdf"

Comments

Your comments are welcome. If you have any questions after consulting this manual, please contact us via e-mail at helpdesk@emuag.ch

Scope of Delivery and Reception Inspection

Scope of delivery:

- A quick-start guide which explains the most important elements of the meter. Please read that guide thoroughly.
- Your EMU Professional II: Item nr. P2xA0x0xx

If your delivery exhibits obvious damages, please contact us immediately via e-mail at helpdesk@emuag.ch

Product Description

The EMU Professional II is:

- to be used as a 3-phase energy meter only.
- intended for static 3-phase measurements of imported and exported active energy according to EN50470-3:2006 in the residential, business and industrial sector.
 - These measurements can be used for billing purposes.
- intended for static 3-phase measurements of imported and exported reactive energy according to EN62053 in the residential, business and industrial sector.
 - These measurements can be used for billing purposes.
- suitable for installation in static, weatherproof control enclosures in buildings.
- deployable in four-wire systems and TN-grids.
- applicable for direct metering for up to 100A in its 3/100 model.
- only applicable for measurements in medium and high voltage grids if used in conjunction with current and voltage transformers.
- designed to be used in conjunction with external ..1A or ../5A current transformers in its 3/5 model.
- suitable for use in the residential, business and industrial sector.
- certified for load profile according to PTB-A 20.1 and PTB-A 50.7 in the LP version.

You are able to display the measurement data on the display or read them out over diverse interfaces of the EMU Professional II.



Note: The LP version of the EMU Professional II is only certified for active energy measurement billing purposes!



Note: A special chapter at the end of this user manual describes the LP version in detail. Information in the chapter "Extended Information for Load Profile According to PTB-A 50.7" supercedes the corresponding information in the following user manual.



Attention: *Improper use of the EMU Professional II can lead to severe personal or property damage.*

Versions

All meters are certified according to MID B+D. The LP versions are further certified for load profile measurements according to PTB-A 20.1 and PTB-A 50.7.

| Article Number | Description | Supplementary Information | EAN/GTIN Number |
|----------------|--|--|-----------------|
| P20A0000 | EMU Professional II 3/100 | MID B+D Certified | 7649991279014 |
| P20A000M | EMU Professional II 3/100 M-Bus | MID B+D Certified | 7649991279021 |
| P20A000T | EMU Professional II 3/100 TCP/IP | MID B+D Certified | 7649991279038 |
| P20A000MO | EMU Professional II 3/100 Modbus | MID B+D Certified | 7649991279045 |
| P20A000LO | EMU Professional II 3/100 LoRa | MID B+D Certified | 7649991279052 |
| P20A030M | EMU Professional II 3/100 M-Bus LP | MID B+D, PTB-A 20.1 and PTB-A 50.7 certified | 7649991279069 |
| P20A030T | EMU Professional II 3/100 TCP/IP LP | MID B+D, PTB-A 20.1 and PTB-A 50.7 certified | 7649991279076 |
| P21A0000 | EMU Professional II 3/5 | MID B+D Certified | 7649991279090 |

| Article Number | Description | Supplementary Information | EAN/GTIN Number |
|----------------|-----------------------------------|--|-----------------|
| P21A000M | EMU Professional II 3/5 M-Bus | MID B+D Certified | 7649991279106 |
| P21A000T | EMU Professional II 3/5 TCP/IP | MID B+D Certified | 7649991279113 |
| P21A000MO | EMU Professional II 3/5 Modbus | MID B+D Certified | 7649991279120 |
| P21A000LO | EMU Professional II 3/5 LoRa | MID B+D Certified | 7649991279137 |
| P21A030M | EMU Professional II 3/5 M-Bus LP | MID B+D, PTB-A 20.1 and PTB-A 50.7 certified | 7649991279144 |
| P21A030T | EMU Professional II 3/5 TCP/IP LP | MID B+D, PTB-A 20.1 and PTB-A 50.7 certified | 7649991279151 |

Firmware Versions

The EMU Professional II has two firmware versions.

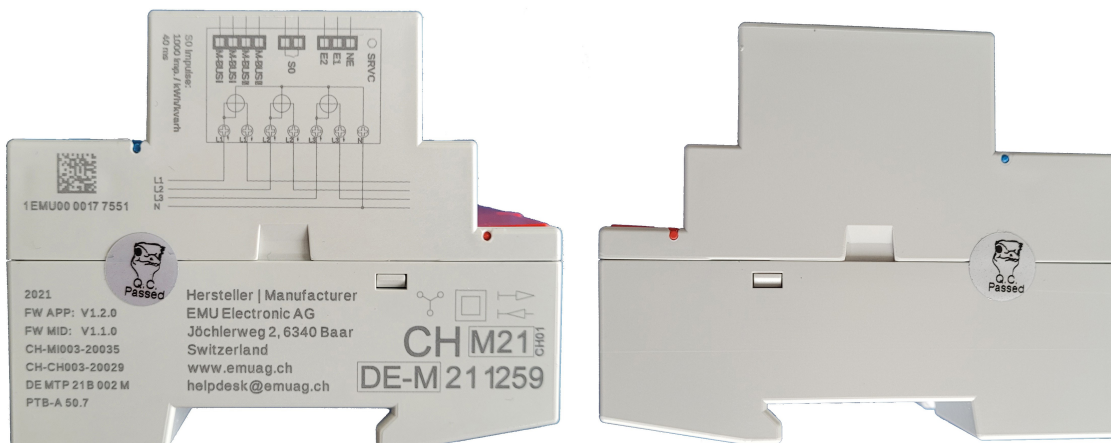
- The device FW-Version: Device firmware version and checksum can be found in the settings menu “SW Version”.
- The certified MID FW-Version: MID firmware version and checksum can be found in the settings menu “SW Version” by pressing the “Arrow down” Button for more than 2 seconds.

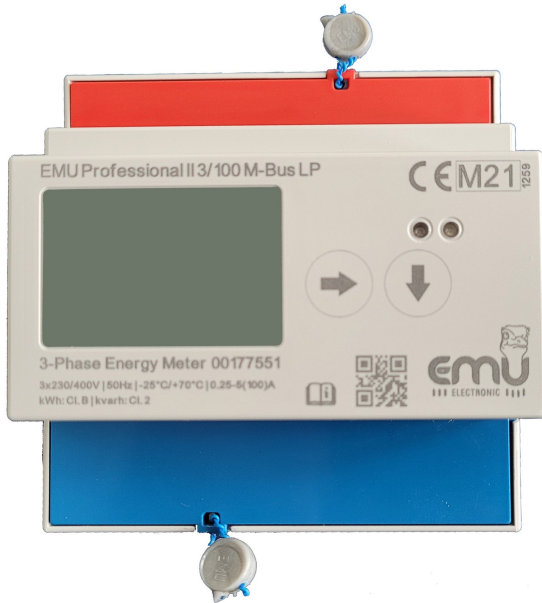
Protection against unauthorized alteration of settings

A lead seal can be affixed to the EMU Professional II to ensure the integrity of the settings. Furthermore an adhesive seal label makes any opening of the meter obvious.



Note: The LP version of the EMU Professional II is secured by an adhesive seal label on both sides of the meter.





Similar to picture.

Measurement Process

The EMU Professional II measures current and voltage as follows:

The EMU Professional II measures current and voltage each for 1 second after which the next measurement starts. During this second the following procedure happens: - The EMU Professional II records 2520 measurement points for current I and voltage U each. These measurement points have a resolution of 32bit. - All measurement values for both the current I and voltage U are squared, added up and divided by the number of measurement points (2520) at the end of the second. After this second the EMU Professional II calculates the square root of this value to get the RMS value for both current and voltage:

$$\sqrt{\frac{U_1^2 + U_2^2 + \dots + U_{768}^2}{2520}} = U_{eff}$$

$$\sqrt{\frac{I_1^2 + I_2^2 + \dots + I_{768}^2}{2520}} = I_{eff}$$

At the same time the following integral is calculated:

$$\int U \cdot I dt$$

Multiplying U_{rms} and I_{rms} results in the apparent power S :

$$S = U_{eff} \cdot I_{eff}$$

The power factor $\lambda(\cos\varphi)$ is calculated with:

$$\lambda = \frac{\int U \cdot I dt}{S}$$

And the active power :

$$P = F \cdot S$$

The calculated integral of current and voltage, as well as power ensures the coverage of non-sine currents up to the 7th harmonic.

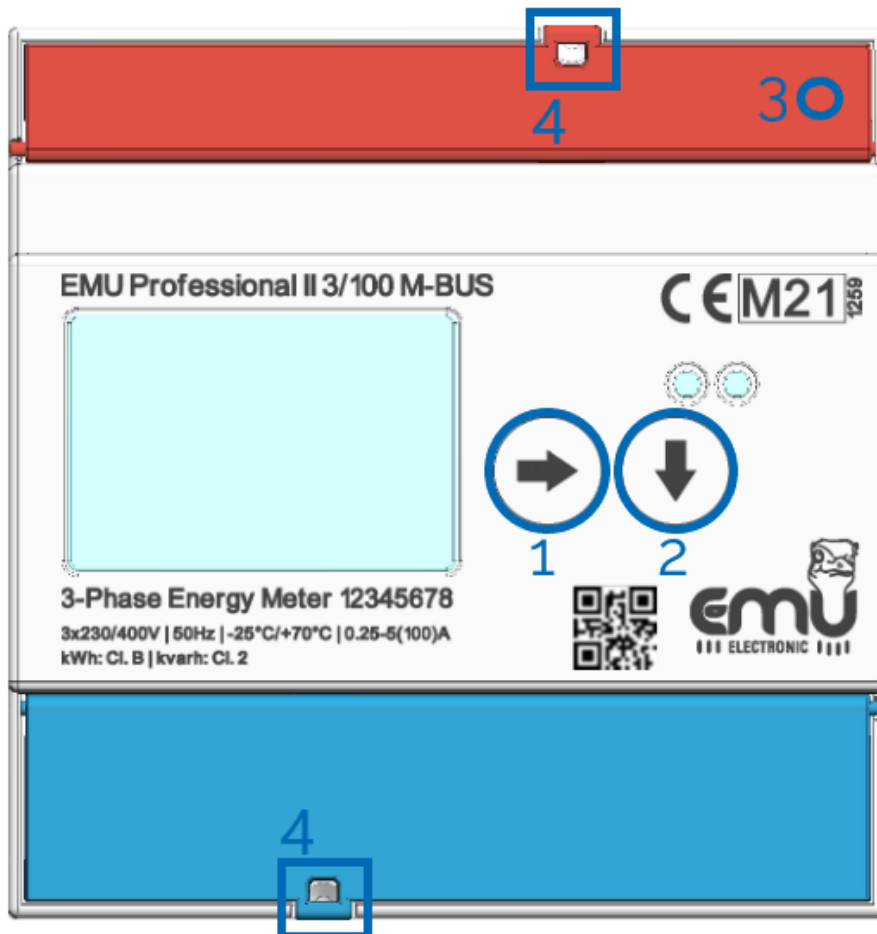
Operation Concept



Note: If you use the EMU Professional II in conjunction with an EMU M-Bus Center you can set the addresses and baud rates of the EMU Professional via the EMU M-Bus Center.

The following explains the control elements of the EMU Professional II.

Buttons



Picture similar

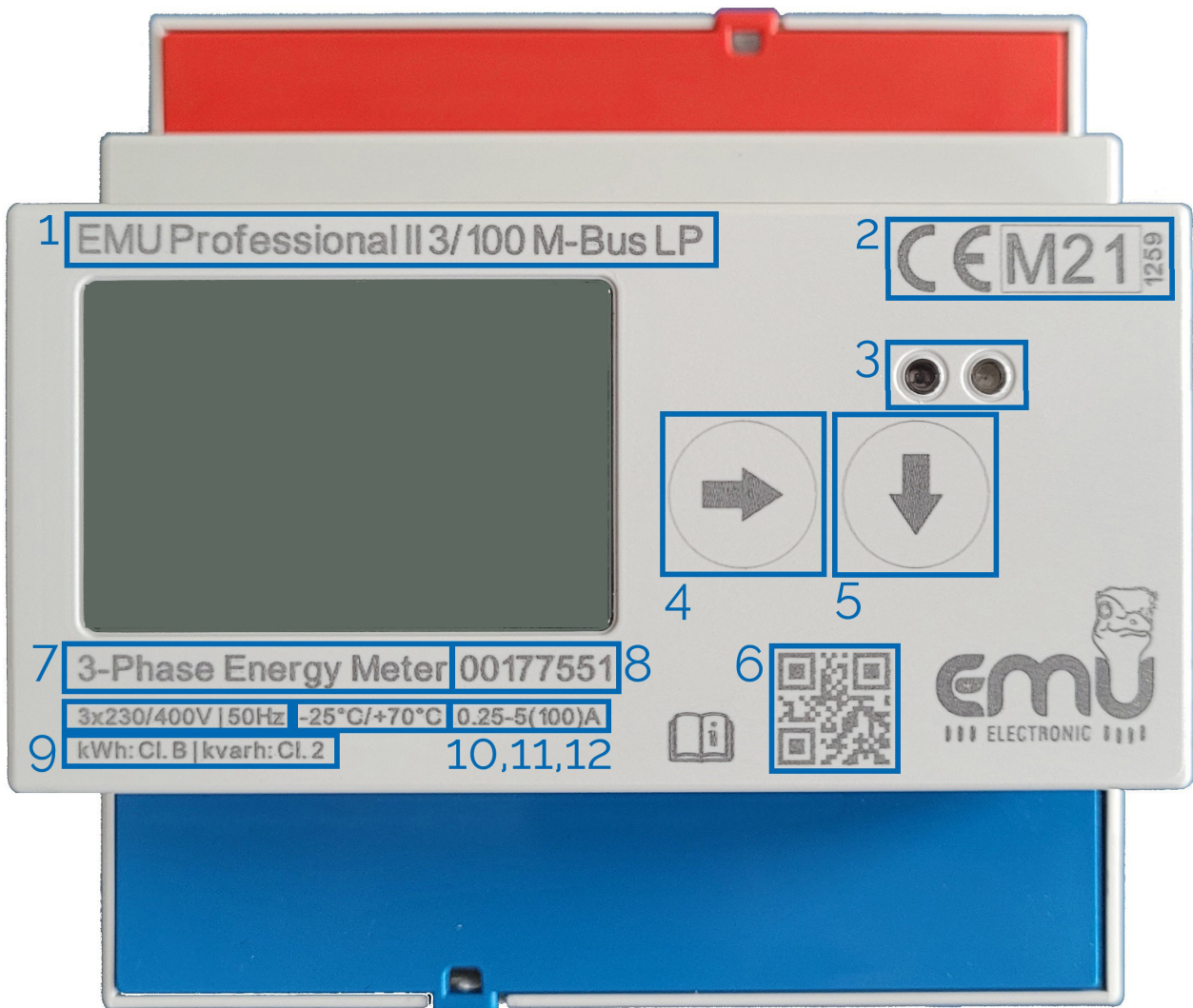
The manipulation of the meter is done via two touch buttons and the service button (SRVC):

- “Arrow right” (Button 1)
- Switch to the next main menu page with a short press (<2s) of the button.
- Switch to the previous main menu page with a long press (>2s) of the button (Device FW 1.3.0 and newer).
- “Arrow down” (Button 2)
- A short press (<2s) lets you switch between sub menu pages of a main menu item.
- A longer press (>2s) lets you use the special functions for that sub menu item.
- “Service Button” (3)
 - A short press (<2s) activates the edit mode of the settings.
 - A longer press (>2s) lets you save adjustments to the settings.

Lead Seal (4): The service button (SRVC) is covered by a cover cap after installation. A lead sealing of this cover secures your device against manipulation from third parties. This secures all settings from unauthorized manipulation.

The current and voltage supply connectors can be similarly secured.

Overview Front EMU Professional II



Similar to picture.

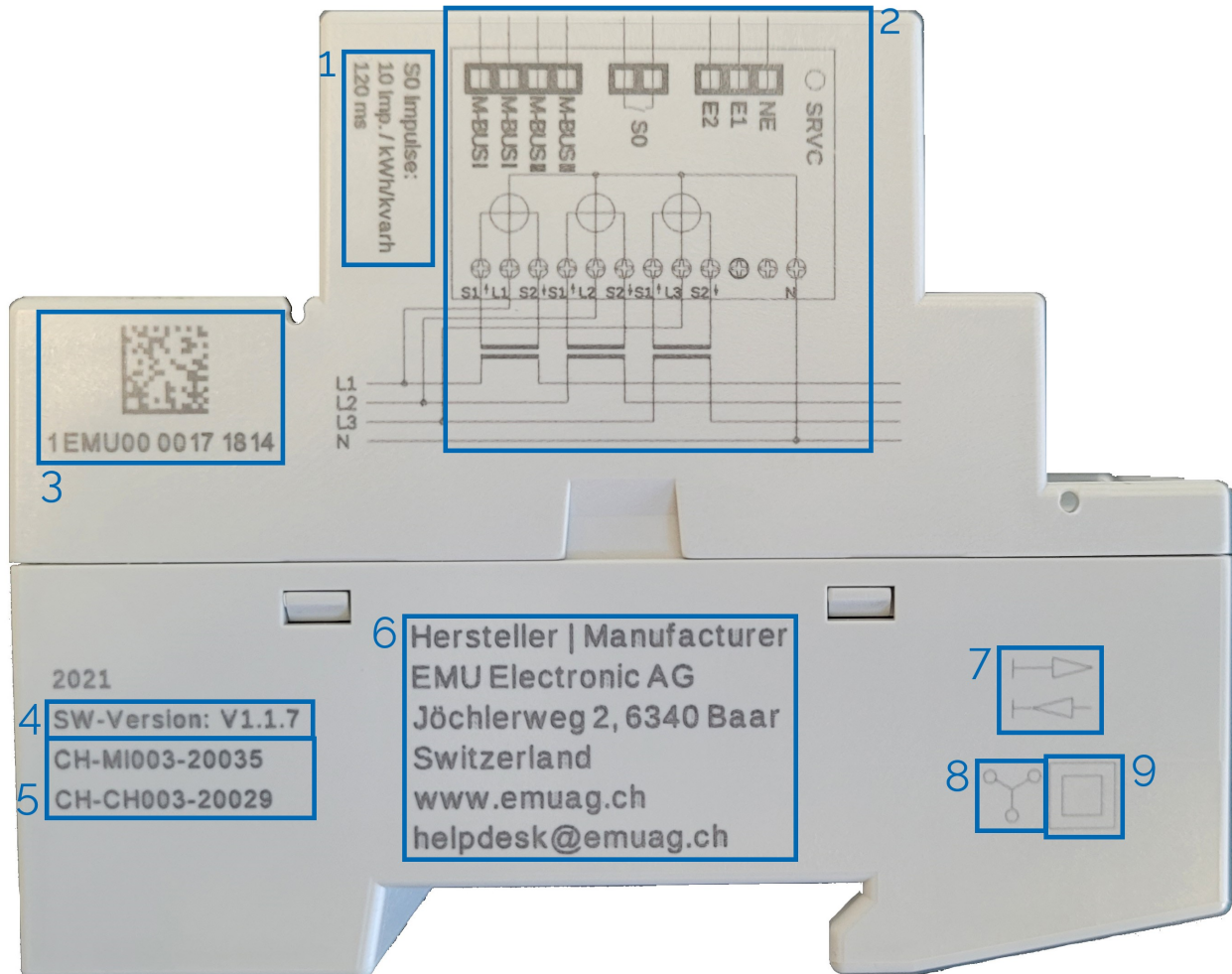
The following primary elements are on the front panel of the EMU Professional II.

1. Type Description
2. Active Energy Certification
3. D0 Interface
4. Operating Key "Arrow right"
5. Operating Key "Arrow down"
6. QR Code with Item Number and Identification number for measuring devices applying for all manufacturers
7. Number of Phases, Number of Conductors
8. Serial number
9. Class identification
10. Reference Voltage, Reference Frequency
11. Operating temperature
12. Current range

The front panel also shows the following secondary element:

- The company logo.

Overview Laserprint Right

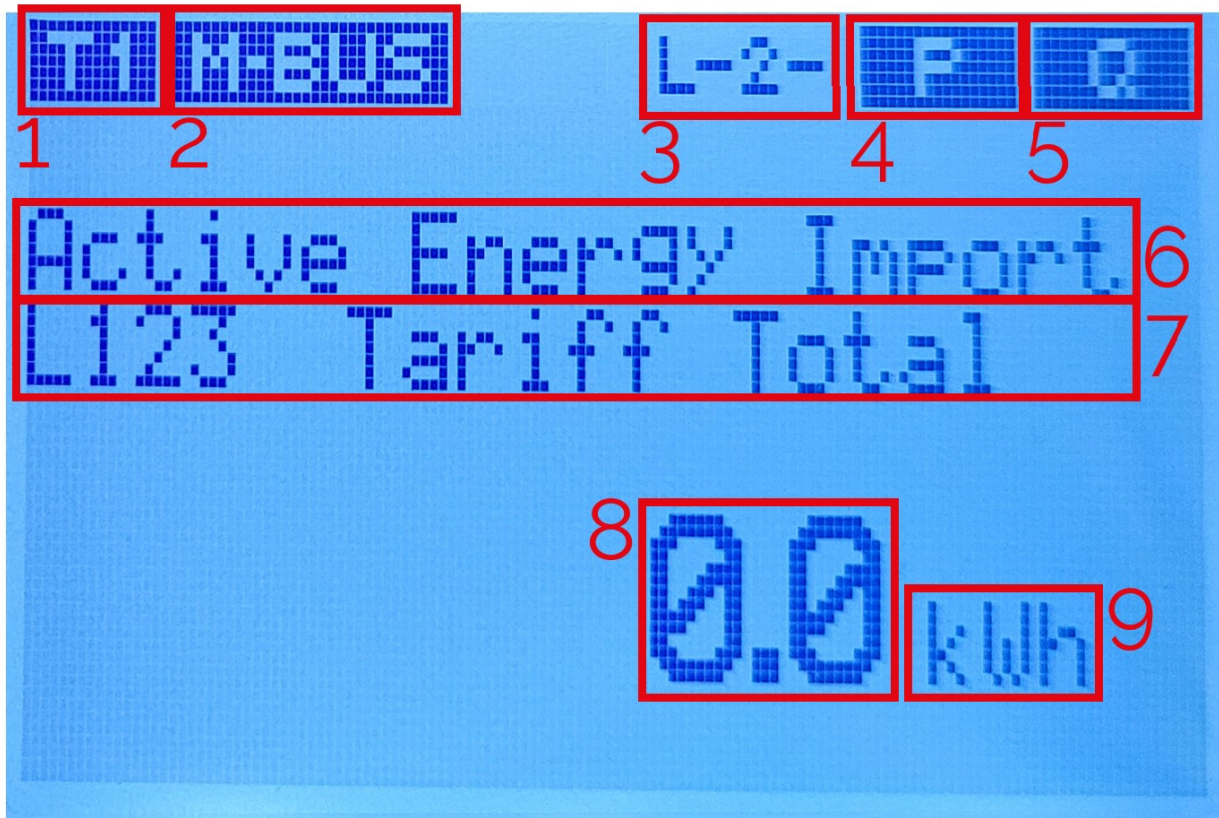


Similar to picture.

The following information is printed on the right side:

1. Meter Constant
2. Connection Diagram
3. Identification number for measuring devices applying for all manufacturers
4. Firmware- and Software-Version
5. Type Test Certificate
6. PTB-A Certificate (only on the LP version)
7. Mark or Manufacturer Identification with Name and Address
8. Connection Diagram, Insulation according to protection rating and Meter class
9. Reactive Energy Certificate
10. Load Profile Certificate according to PTB-A 50.7

Overview Display



Similar to picture.

1. Current Tariff
2. Active Communication Interface
3. Phase Sequence
4. 4 Quadrant display with 5.
 - "<<P" : Export Active Energy
 - "P>>" : Import Active Energy
5. 4 Quadrant display with 4.
 - "<<Q" : Export Reactive Energy (Inductive)
 - "Q>>" : Import Reactive Energy (Capacitive)
6. Measurement / Menu item
7. Sub Menu Item
8. Current Measurement Value
9. Unit of Current Measurement Value

The following table shows and describes all possible symbols that can show on the display.

| Symbol | Description |
|---------------|--|
| T1 | The currently set tariff. The number indicates which tariff. |
| MODBUS | The interface of the meter is Modbus. |
| ETH | The interface of the meter is TCP/IP. |
| M-BUS | The interface of the meter is M-Bus. |
| LoRa | The interface of the meter is LoRa. |
| L123 | All phases are connected. If one or more of the numbers are replaced by a “-” then the corresponding phase is not or incorrectly connected. |
| P→ | The meter is currently measuring active energy consumption. |
| ←P | The meter is currently measuring active energy production. |
| Q→ | The meter is currently measuring reactive energy consumption (Capacitive). |
| ←Q | The meter is currently measuring reactive energy production (Inductive). |
| PTE NW | Only applies to the LP version of the EMU Professional II. The meter is in a invalid calibration state. All further measurements by the meter must not be used for billing purposes. |
| OF | One or more energy registers have detected a overflow. |
| TNW | Only applies to the LP version of the EMU Professional II. The date and time of the meter are invalid. Please synchronize the date and time with the current date and time. |
| TNE | Only applies to the LP version of the EMU Professional II. Date and time on the meter is not synchronized correctly. |
| NTP | Only applies to the LP version of the EMU Professional II with the ETH interface. The meter couldn't synchronize its date and time for at least one hour. |
| MEM | The internal memory of the meter has a defect. Please create a ticket at https://www.emuag.ch/en/support-2/support-form/ . |

Compatible Devices

Interfaces:

- M-Bus
- TCP/IP
- ModBus RTU, ModBus TCP
- LoRa

The EMU Professional II is compatible with the EMU M-Bus Center and our energy management software “Joulio-Web” (ISO 50001). You profit from templates for the meter register configuration of the EMU Professional II as well as an easy incorporation of your EMU M-Bus Center and meters into Joulio-Web.

Installation

The EMU Professional II is not dependent on location or position. The meter is designed to fit on 35mm DIN-rails (EN 50022) or to be installed with a front installation frame. To remove the meter from a DIN-rail just pull the spring loaded bolt on the underside.

The meter weighs about 400g.

To ensure most efficient installation and service of the EMU Professional II meters we recommend using indirect metering such as EMU Professional II 3/5 meters for installations where a quick and inexpensive shut down of the installation is not possible.



Attention: The installation of the meter must be carried out by qualified and trained personnel. Current transformers must not operate open loop as high voltages can occur. These voltages can lead to personal and property damage.



DANGER: Make sure that all connected wires are voltage free before you install / change or check the meter. Touching any live elements is dangerous to life!



DANGER: The EMU Professional II 3/5 has voltage on the current path! Make sure that the voltage connections are voltage free before you install the current transformer. Touching any live elements is dangerous to life!



Attention: According to DIN VDE 0100-557, Punkt 5.3.1, the secondary winding of current transformers must not be grounded in low-voltage-installations!



Attention: Only use the intended screw and spring clamps to connect your meter. It is recommended to use end sleeves.



Attention: Nonobservance of mounting and installation instructions may lead to damage or destruction of this meter. Please keep to the instructions.

Technical Data

| Property | Value |
|---|---|
| Active Energy | Class B (1%) according to EN50470-3 Direct connection meter Class B (1%) according to EN50470-3 Converter counter |
| Reactive Energy | Class 2 (2%) according to EN62053 |
| Supply Voltage | L-L: 400VAC +/- 20% L-N: 230VAC +/- 20% |
| Max Current | Direct connection meter: 100A Converter counter: 5A |
| Initial Current | Direct connection meter <9mA at cosphi 1 Converter counter <1mA at cosphi 1 |
| Frequency | Nominal frequency: 50Hz, 60Hz on demand Critical frequency: 40 - 65Hz |
| Internal Consumption | Voltage route 0.8VA / 0.8W per phase Current route of Converter counter 0.03VA per phase |
| Current and Voltage connectors | Direct connection meter: 1.5-25mm ² , Torque: 2Nm, max. 3Nm Converter counter: 1-16mm ² , Torque: 1Nm, max. 3Nm |
| Tariff Change | 230VAC |
| Repeated adjustments of current transformer | Current transformer /5 A 5/5 A up to 20'000/5 A in 5 A-steps Current transformer /1 A 1/1 A up to 4'000/1 A in 1 A-steps |
| Voltage Transformer | On the transformer-connected meter EMU Professional II 3/5 the voltage transformation can be configured. |
| Display | LC-Display 8-digit with one decimal place 1234567,8 kWh Graphical LCD with backlighting (LxW) 38x28mm |
| S0 Pulse Output | Norm EN62053-31 Output is potential free Pulse rate per kWh 1, 10, 100, 1000 und 10000 imp/kWh Pulse length 2ms, 10ms, 30ms, 40ms und 120ms Pulse rate- and length adjustable on the meter |
| M-Bus | Norm EN13757-2, -3 Current consumption 1.5mA, one standard load Connector diameter 0.5–2.5mm ² Secondary address 8-digit 00000000-99999999 Primary address 0 to 250 Baud rate: 300, 600, 1'200, 2'400, 4'800 and 9'600 Baud Configuration via buttons or the EMU MB-Connect Software Read-out data configurable via EMU MB-Connect Software |
| Modbus RTU | RS485 Connector diameter 0.5–2.5mm ² , Configuration via buttons |
| Optional Data Interfaces | M-Bus Modbus RTU/ Modbus TCP TCP/IP: Web-server, http-get API LoRa |
| Optical (IR) D0-Interface | EN 62056-21 |
| Security of Data | Dead-voltage on the Up Flash or Eeprom, Minimum 10 years Optional: IOTA Tangle (Block-chain technology) |
| Clock | Integrated clock with options to synchronize via NTP, Modbus, M-Bus, LoRa (according to the interface) |
| Installation | Not dependent on location and position On 35mm DIN-rails or with front installation frame Weight ca. 400g |
| Housing | Housing material Polycarbonate, halogen free, recyclable Connectors safety class IP20, Housing safety class IP 51 Protection class II Physical dimensions (LxWxD) 90x91x72mm |

| Continuation of technical data | |
|--|---|
| Property | Value |
| Certificates | CE and MID B + D PTB-A 20.1 and PTB-A 50.7 Suitable for energy management according to ISO 50001 |
| Environmental Conditions | Mechanical: M2 Electromechanical: E2 Temperature operation: -25 °C to + 55 °C Temperature storage: -30 °C to + 70 °C Relative humidity: yearly avg. 75%, short term 90%, non-condensing |
| Final inspection certificate | CH-MI003-13022 CH-MI003-13025 DE MTP 21 B 002 M |
| Frequency independent measurement at 2 kHz up to 150 kHz | According to CLC/FprTR 50579:2012 |

Commissioning / Check-up



Note: To check before operation:

- Phase rotation
- Current per phase, Negative energy direction
- Sequence of phase (L1 L2 L3)
- Current Transformer ratio
- Terminal tightening torque
- Read-out interface: Correct address

The EMU Professional II is to be used exclusively to measure electrical energies and must not be operated outside the specified technical limits.

Settings ex Factory

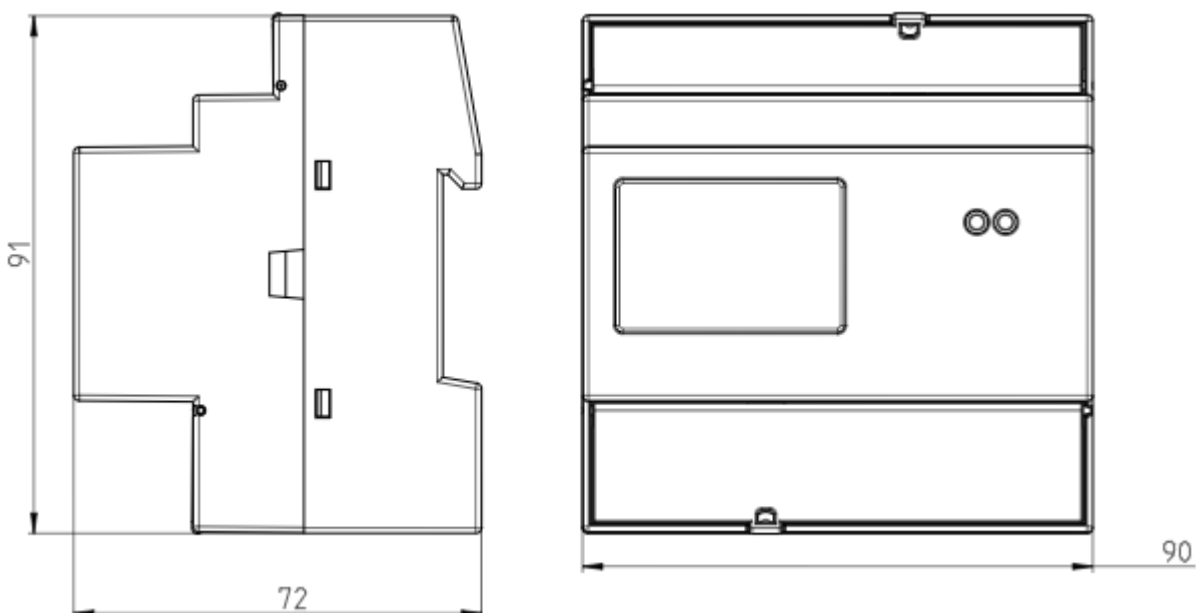
S0 Output : Active Energy Import (Pin 6 + 7)

Highly robust Opto Power MOSFET: 5–60VAC oder VDC

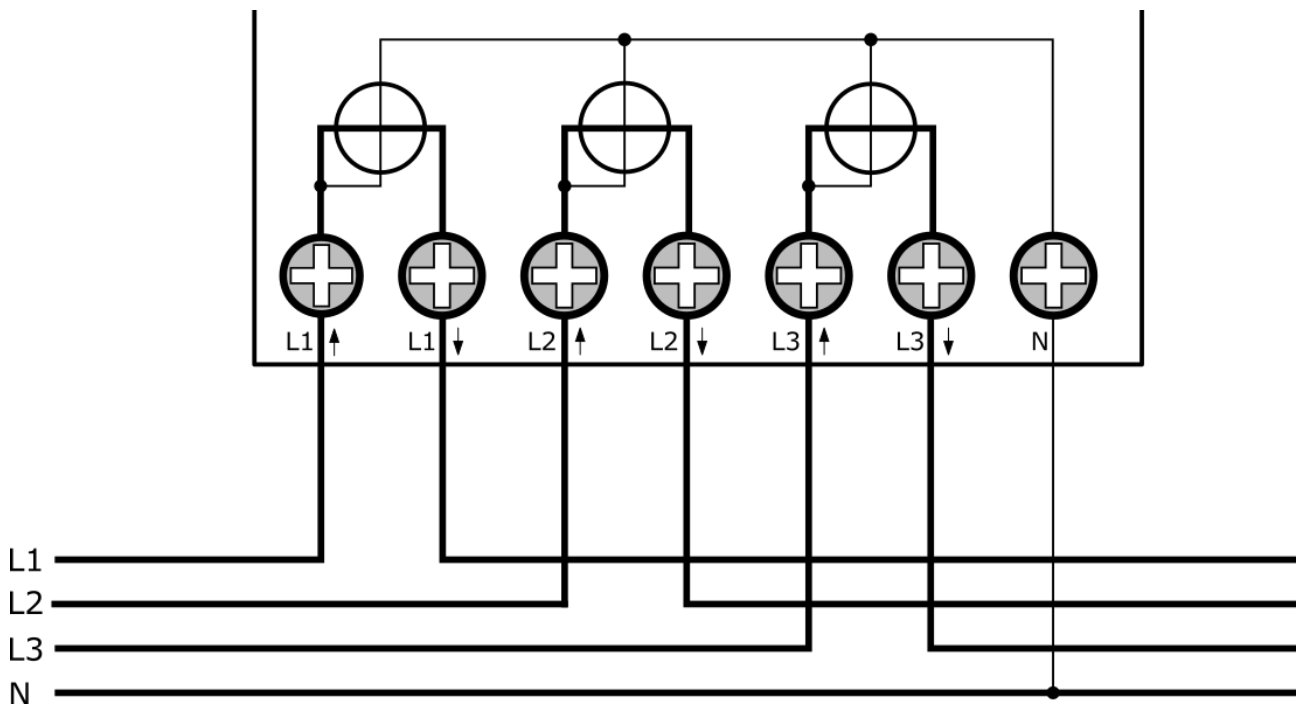
Current transformer meter: 10 Impulse / kWh

Direct meter: 1000 Impulse / kWh

Measurements



Connection Diagram Direct Meter



The direct meter taps the voltage of the phases internally. Connect the neutral conductor to the “N” clamp.

Pay special heed to the arrows on the connection clamps of the meter. “Lx↑” is **always** on the grid side, “Lx↓” **always** on the installation side.



Note: Connect the meter according to the instructions even if the meter only ever measures exported energy! The EMU Professional II measures import as well as export correctly.

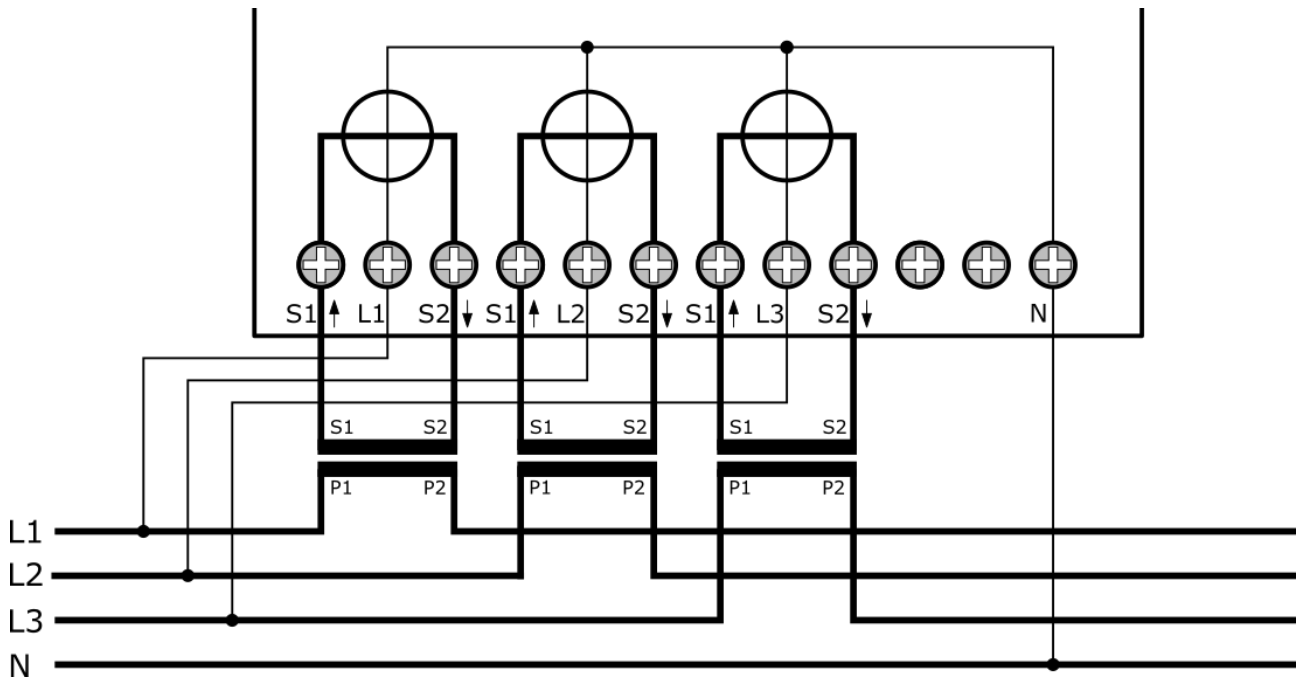
The following table shows the most important characteristics of the direct connections:

| I_{st} | I_{min} | I_{tr} | I_{ref} | I_{max} |
|----------|-----------|----------|-----------|-----------|
| 0.02A | 0.15A | 0.5A | 5A | 100A |



DANGER: Make sure that all connected wires are voltage free before you check or change any connections. Touching any live elements is dangerous to life!

Connection Diagram Converter Counter



The EMU Professional II converter counter needs an external voltage tap. Connect this voltage tap to the corresponding "Lx". Connect the neutral conductor to the "N" clamp.

Pay special heed to the arrows on the connection clamps of the meter. "S1↑" is **always** on the grid side, "S2↓" **always** on the installation side.



Note: Connect the meter according to the instructions even if the meter only ever measures exported energy! The EMU Professional II measures import as well as export correctly.



Attention: Due to the voltage on the current path on the EMU Professional II 3/5 any connected current transformers must not be grounded!



Attention: The two connector clamps between "S2↓" of phase 3 and the neutral conductor are for future functions. Do not connect anything to these clamps. Incorrect connection of these two clamps can lead to severe damage to the meter.



DANGER: The EMU Professional II 3/5 has voltage on the current path! Make sure that the voltage connections are voltage free before you install the current transformer. Touching any live elements is dangerous to life!

The following table shows the most important characteristics of the converter connections:

| | Current /5A | Current /1A |
|-----------|-------------|-------------|
| I_{st} | 0.005A | 0.001A |
| I_{min} | 0.05A | 0.01A |
| I_{tr} | 0.25A | 0.05A |
| I_{ref} | 5A | 1A |
| I_{max} | 5A | 1A |



DANGER: Make sure that all connected wires are voltage free before you check or change any connections. Touching any live elements is dangerous to life!

Tightening Torque

| Net | Direct connections up to 35mm ² strand | Converter connections up to 6mm ² strand |
|-----------------|--|--|
| Supply L1/L2/L3 | 2-3Nm | 1.3 - 1.6Nm |
| Supply N | 2-3Nm | 1.3 - 1.6Nm |



Note: It is recommended to use end sleeves.



Note: The signal outputs have spring-cage clamps.

Spring-Cage Clamps Wire Diameter

| Connection | Diameter | Stripping |
|-----------------|---------------------------|-----------|
| S0 pulse output | 1.5mm ² strand | 10 mm |
| Tariff control | 1.5mm ² strand | 10 mm |
| M-Bus/Modbus | 1.5mm ² strand | 10 mm |

Cable Requirements for Direct Connections >65A

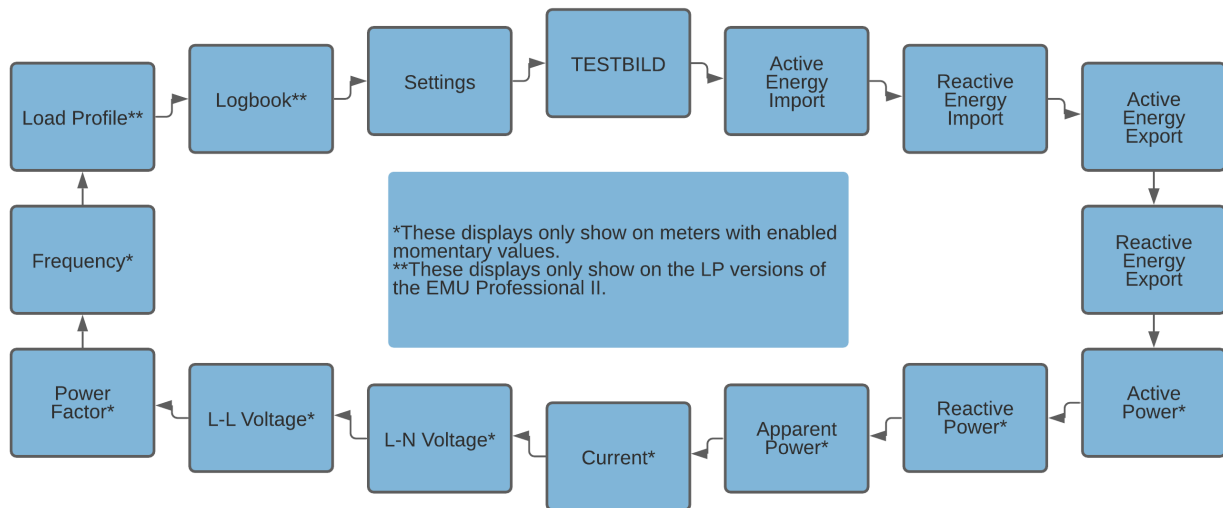
- Type: Wire (Cu)
- Cross-section: 35mm²
- Diameter (with insulation): 9,55 mm
- Example: E-Number 105502800, available from Swiss electrical wholesale

Operation

This chapter explains the navigation through the different menu and sub menu pages.

Main Menu Pages

When you connect the EMU Professional II to a supply voltage for the first time, a “TEST DISPLAY TEST” is shown. After ca. 2 seconds the main menu page “Active Energy Import” is displayed.



Every press of the “Arrow Right” button switches to the next main menu page in a closed loop as follows:

Test Display -> Active Energy Import -> Reactive Energy Import -> Active Energy Export -> Reactive Energy Export -> Active Power -> Reactive Power -> Apparent Power -> Current -> Voltage L-N -> Voltage L-L -> Power Factor -> Frequency -> Load Profile -> Logbook -> Settings -> Test Display -> ...

A longer press (>2s) of the “Arrow right” button lets you go back to the previous page. (FW version 1.3.0 and newer)



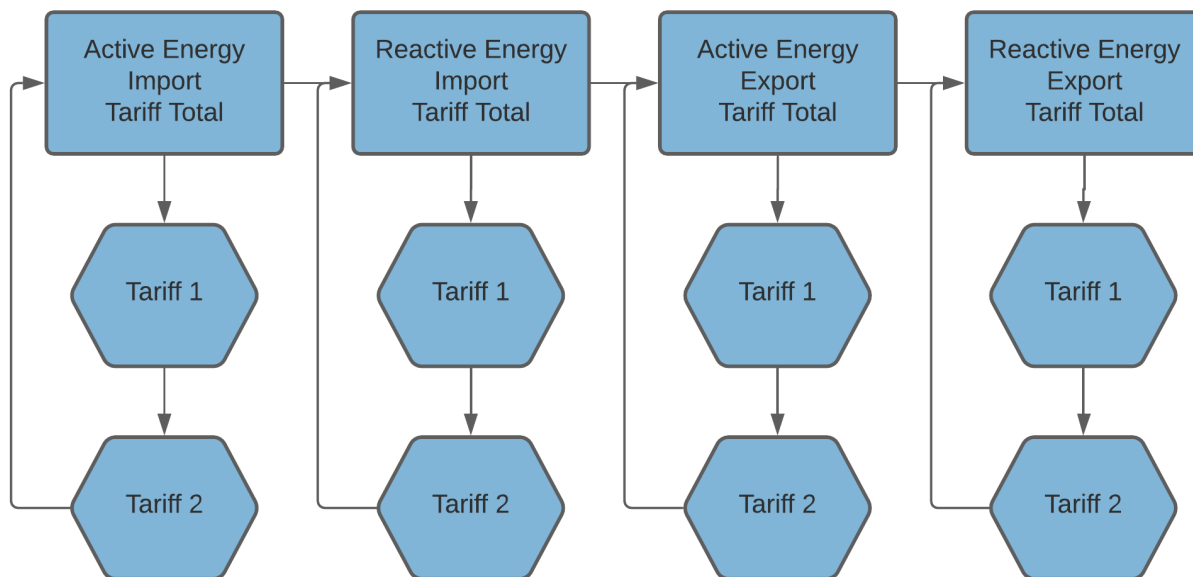
Note: Depending on your meter configuration one or more of these main menu pages do not show up. Please consult the picture above for more information.

Sub Menu Pages

A list of all sub menu pages follows.

Energy

The main menu pages “Active Energy Import / Export” and “Reactive Energy Import / Export” display by default the total Import / Export of the corresponding energy. By default the following diagram applies for their sub menu pages:



Note: It is possible to adjust these displays. Please consult the chapter Settings for the Display.

The EMU Professional II features an auto-range function to guarantee a energy value display as precise as possible. Once the display overflows, a “OF” flag is set on the display. If this flag is set, the display reading that overflowed starts again from zero. Keep in mind that the registers in the background overflow much later (ca. 18 Bn. GWh) than the display (99 Mio. MWh). You can still read-out the correct measurements over the interfaces. The display shows the energy readings as follows:

| Meter count [Wh] | Divider (prescaler) | Divider (decimal digit) | Display Range Start | Display Range End | Unit | Change |
|-----------------------|---------------------|-------------------------|---------------------|-------------------|------|------------------------|
| 1 | 100 | 10 | 0.0 | 0.0 | kWh | |
| 10 | 100 | 10 | 0.0 | 0.0 | kWh | |
| 100 | 100 | 10 | 0.1 | 0.9 | kWh | |
| 1'000 | 100 | 10 | 1.0 | 9.9 | kWh | |
| 10'000 | 100 | 10 | 10.0 | 99.9 | kWh | |
| 100'000 | 100 | 10 | 100.0 | 999.9 | kWh | |
| 1 * 10 ⁶ | 100 | 10 | 1000.0 | 9999.9 | kWh | |
| 10 * 10 ⁶ | 100 | 10 | 10000.0 | 99999.9 | kWh | |
| 100 * 10 ⁶ | 100 | 10 | 100000.0 | 999999.9 | kWh | |
| 1 * 10 ⁹ | 100 | 10 | 1000000.0 | 9999999.9 | kWh | |
| 10 * 10 ⁹ | 1'000 | 1'000 | 10000.000 | 99999.999 | MWh | 3 decimal places; Unit |
| 100 * 10 ⁹ | 10'000 | 100 | 100000.00 | 999999.99 | MWh | 2 decimal places |
| 1 * 10 ¹² | 100'000 | 10 | 1000000.0 | 9999999.9 | MWh | 1 decimal place |

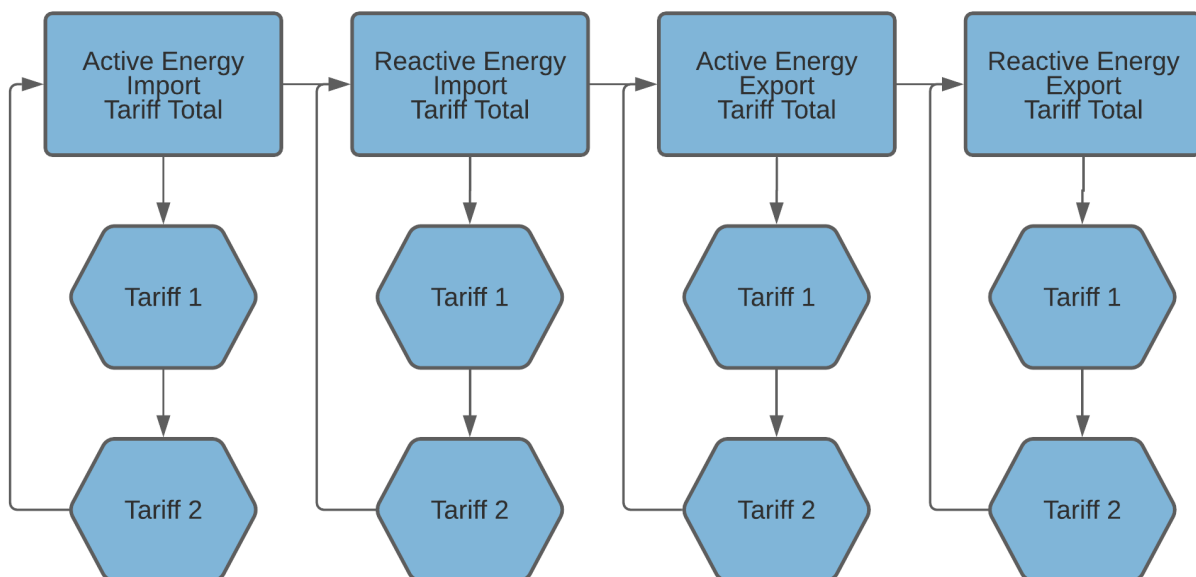
| Meter count [Wh] Range | Divider (prescaler) | Divider (decimal digit) | Display Range Start | Display Range End | Unit | Change |
|------------------------|---------------------|-------------------------|---------------------|-------------------|------|--------------------------------|
| $10 * 10^{12}$ | 1'000'000 | 1 | 10000000 | 99999999 | MWh | no decimal places |
| $100 * 10^{12}$ | | | Overflow display | Overflow display | MWh | Overflow display, REstart at 0 |
| $1 * 10^{15}$ | | | Overflow display | Overflow display | MWh | |
| $10 * 10^{15}$ | | | Overflow display | Overflow display | MWh | |
| $100 * 10^{15}$ | | | Overflow display | Overflow display | MWh | |
| $1 * 10^{18}$ | | | Overflow display | Overflow display | MWh | |
| $10 * 10^{18}$ | | | Overflow counter | Overflow counter | MWh | Overflow counter |

Maximal Value: 18'446'744'073'709'600'000 Wh = 18'446,7 PWh

Power and Current

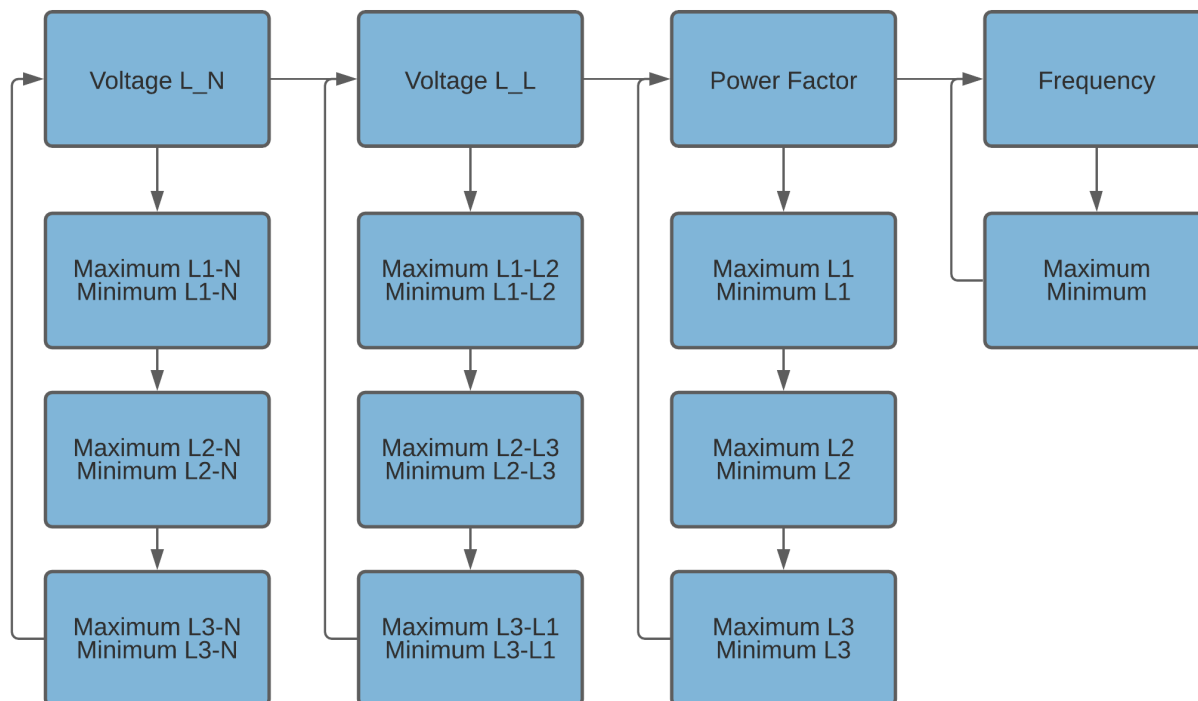
The main menu pages of “Active / Reactive / Apparent power” display the total current power consumption. Pressing the “Arrow Down” button lets you change the display to the power consumption on individual phases.

The main menu pages “Current” displays the total current for all 3 phases. Pressing the “Arrow Down” button lets you change the display to the current of individual phases.



Voltage, Power Factor and Frequency

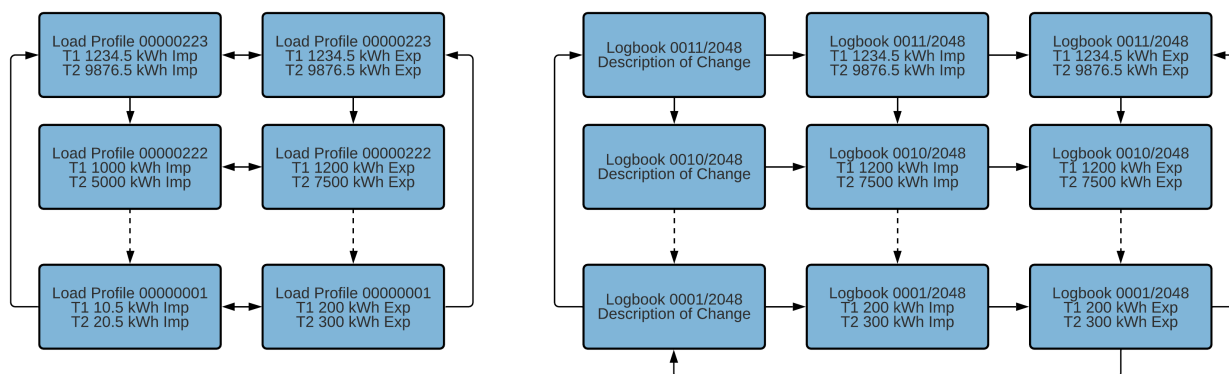
If your EMU Professional II energy meter is configured with momentary values a short press (<1s) of the “Arrow down” button lets you browse the maximal and minimal values of the corresponding measurements. The time and date when those values were recorded are stored as well.



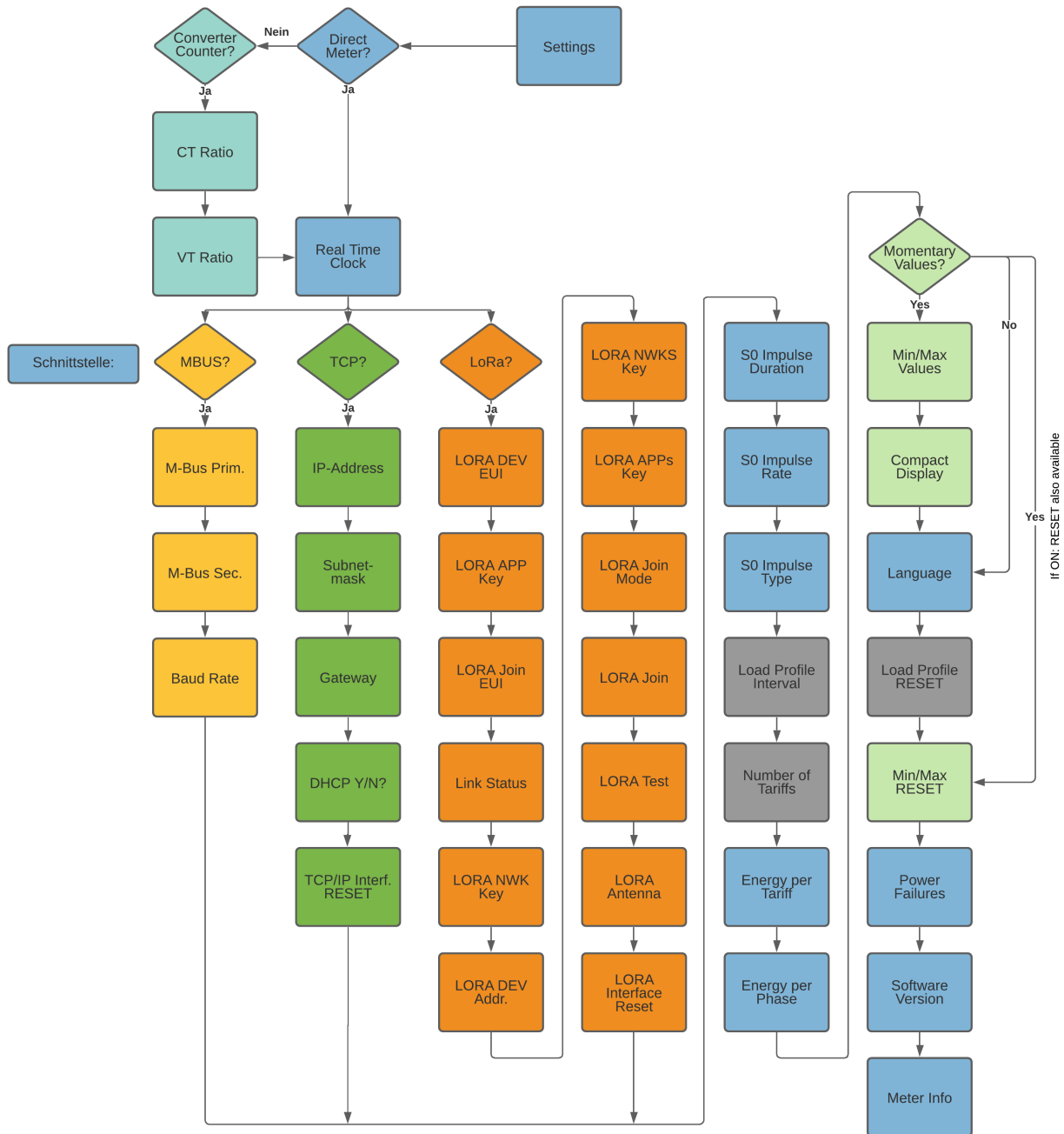
Load Profile and Logbook

A short press (<1s) on the “Arrow Down” button lets you browse the saved load profiles and logbook entries. The entries always start with the latest entry.

A longer press (>1s) of the “Arrow Down” button lets you change between import and export for the load profiles and between the adjustment and the meter readings at the time of the adjustment for the logbook page.



Settings



Every press of the “Arrow Down” button changes the sub menu item according to the arrows in the chart above and where no arrows are, from top to bottom.

A short press on the “SRVC” button (<2s) unlocks the current parameter for editing purposes. The parameter or the currently focused cursor position starts to blink.

A short press on the “Arrow Right” button moves the cursor one digit to the right. If you reach the end of the line, the cursor jumps back to the first digit.

Increment the chosen digit or parameter with a press of the “Arrow Down” button.

Another short press on the “SRVC” button (<2s) lets you leave the edit mode of this parameter, **discarding any changes made**.

A long press on the “SRVC” button (>2s) saves the edited parameter and exits the editing mode automatically. The successful save is acknowledged with a short blinking of the LED backlighting.

Color coding of the flow chart:

- Turquoise: These settings are only available on the converter counter.
- Blue: These settings are available on all versions of the EMU Professional II energy meter.
- Yellow: Energy meters with the M-Bus Interface have these interface-specific settings.
- Green: Energy meters with the TCP/IP Interface have these interface-specific settings.
- Orange: Energy meters with the LoRa Interface have these interface-specific settings.
- Dark Grey: These settings are **not available on any** LP versions of the EMU Professional II.
- Light Green: These settings are only available on meters with optional momentary values.



Note: MID firmware version and checksum are stored in the settings under "SW Version" and accessible by pressing the "Arrow Down" button for more than 2 seconds while on that menu page.

Configuration Settings

Tariff Change

A newly set tariff activates immediately.

The tariff-signal is a AC voltage of 230VAC between NE (Clamp 11) and E2 (Clamp 9)/E1(Clamp 10). Tariffs can be set according to the following truth table. "0" means 0VAC and "1" means 230VAC.

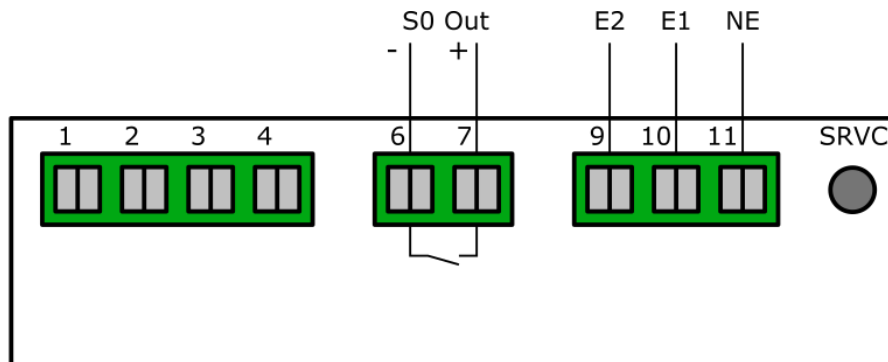
| E2 (Clamp 9) | E1 (Clamp 10) | NE (Clamp 11) | Tariff |
|--------------|---------------|---------------|--------|
| 0 | 0 | 0 | 1 |
| 0 | 1 | 0 | 2 |
| 1 | 0 | 0 | 3 |
| 1 | 1 | 0 | 4 |

Tariff 1 is set ex factory.

The tariff inputs are internally electrically isolated through opto-couplers.



Note: A change of tariff on the LP version of the EMU Professional II is not set until the start of the next load profile interval. A tariff set at the beginning of an interval is set for at least the duration of this interval.



Set Number of Tariffs

Set the number of tariffs in the settings. Choose between a two-rate tariff (2) and a four tariff system (4).

- "Arrow right" to settings
- "Arrow down" to Number of Tariffs
- Press "SRVC" button (<2 seconds)
- "Arrow down" changes between 2 and 4 tariff operation
- Save: Press "SRVC" button (>2 seconds) until the LCD flashes



Note: All pictures in this documentation show only 2 tariffs. The display navigation functions the same with 4 tariffs as with 2 tariffs.

Real Time Clock (RTC)

The real time clock of the EMU Professional II can be set directly on the energy meter or over optional interfaces. The TCP/IP interface allows for a connection to a time server which allows the meter to synchronize itself. The EMU Professional II has an internal clock with a daily deviation of ± 0.4 seconds.

The LP Version of the EMU Professional II has special notifications based on the RTC that can pop up on the display. For more information on the LP version of the EMU Professional II please consult the PTB-A 50.7 specific chapter at the end of this user manual.

Configuration on the Device

The real-time clock can be set directly on the EMU Professional II via the control buttons. The internal RTC is buffered with a super-cap for at least 12 hours while the power is out leading to fewer RTC settings because of brownouts / blackouts. The meter must be powered on for at least 2 hours beforehand to charge the super-cap.



Note: Make sure to start from the right and edit to the left if you set the time via the buttons.

- “Arrow right” to settings
- “Arrow down” to Real-time Clock
- Press “SRVC” button (<2 seconds)
- “Arrow right” chooses the digit, “Arrow down” increments the digit
- Save: Press “SRVC” button (>2 seconds) until the LCD flashes

Configuration over External Interfaces

You can set the time while configuring the M-Bus via the EMU MB-Connect software.

Automatic Synchronization

Time synchronization on M-Bus meters happens through a defined command. The answer entails information about time and date. The meter synchronizes immediately and sends an “ACK” message back as acknowledgement. The time can only be set once per record interval.

Meters with the TCP/IP Interface can synchronize themselves if an NTP time server is specified. For the first synchronization the meter sends time-requests every 1-2 minutes. After the first successful synchronization the request interval goes to once every hour.



Note: Projects with the obligatory load profile certification PTB-A 50.7: Only 2048 entries for a RTC synchronization (or transformer ratio adjustment, S0 ratio adjustment or S0 impulse duration adjustment) are possible before the meter falls into non-valid state. Transformer ratio adjustments can only be done once every load profile interval (15 min).

Configuration of Transformer Ratio

The transformer ratio can be set directly on the EMU Professional II via the control buttons.

- “Arrow right” to settings
- “Arrow down” to CT/VT Ratio
- Press “SRVC” button (<2 seconds)
- “Arrow right” chooses the digit, “Arrow down” increments the digit
- Save: Press “SRVC” button (>2 seconds) until the LCD flashes

Change the current transformer ratio from 5 / 5A up to 20'000 / 5A in 5 A-steps and 1 / 1A up to 4'000 / 1A in 1 A-steps.

Change the voltage transformer ratio from 100 / 100V up to 36'000 / 100V in 100V-steps.

A set ratio of 100:1 means that a primary current of 100A results in a secondary current of 1A on the meter.



Note: Ensure that this ratio matches your current / voltage transformer.



Note: Projects with the obligatory load profile certification PTB-A 50.7: Only 2048 entries for a transformer ratio adjustment (or RTC adjustment, S0 ratio adjustment or S0 impulse duration adjustment) are possible before the meter falls into non-valid state. Transformer ratio adjustments can only be done once every load profile interval (15 min).

S0 Pulse Ratio

The pulse ratio can be set directly on the EMU Professional II via the control buttons.

- “Arrow right” to settings
- “Arrow down” to Pulse Ratio
- Press “SRVC” button (<2 seconds)
- “Arrow right” choose between 1, 10, 100, 1000 and 10000 imp/kWh
- Save: Press “SRVC” button (>2 seconds) until the LCD flashes



Note: Projects with the obligatory load profile certification PTB-A 50.7: Only 2048 entries for a S0 ratio adjustment (or RTC adjustment, transformer ratio adjustment or S0 impulse duration adjustment) are possible before the meter falls into non-valid state. S0 ratio adjustments can only be done once every load profile interval (15 min).

S0 Impulse Duration

In den Einstellungen kann die Impulsbreite festgelegt werden. Wählen Sie zwischen 2ms, 10ms, 30ms, 40ms und 120ms.

- “Arrow right” to settings
- “Arrow down” to impulse duration
- Press “SRVC” button (<2 seconds)
- “Arrow right” choose between 2ms, 10ms, 30ms, 40ms and 120ms
- Save: Press “SRVC” button (>2 seconds) until the LCD flashes



Note: Projects with the obligatory load profile certification PTB-A 50.7: Only 2048 entries for a S0 impulse duration adjustment (or RTC adjustment, transformer ratio adjustment or S0 ratio adjustment) are possible before the meter falls into non-valid state. S0 impulse duration adjustments can only be done once every load profile interval (15 min).

Configuration of the Energy Display

Configure what is shown on the display. You may choose from the following settings.

Energy per Tariff:

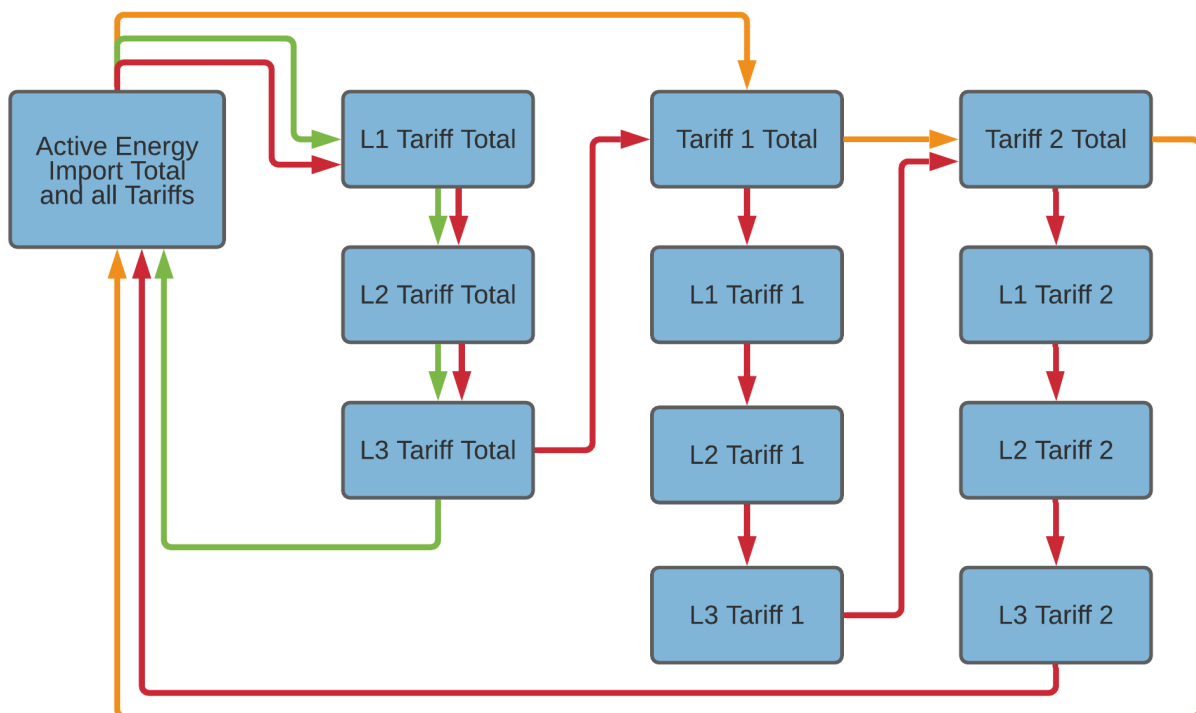
- On: The EMU Professional II displays the imported / exported energy for each tariff on the main menu pages "Active Energy Import / Export" and "Reactive Energy Import / Export".
- Off: The display only shows the total for all tariffs and the chosen setting for "Energy per Phase".

Energy per Phase:

- On: The EMU Professional II displays the imported / exported energy for each phase on the main menu pages "Active Energy Import / Export" and "Reactive Energy Import / Export".
- Off: The display only shows the total for all tariffs and the chosen setting for "Energy per Tariff".

Overview

Depending on which settings for the energy import / export display are on the sub menu pages of the energy displays are as follows:



Legend:

- Green: Only the option "Energy per Phase" is on
- Orange: Only the option "Energy per Tariff" is on.
- Red: Both options are on.

Configuration Interfaces

The EMU Professional II can be fit with several interfaces. There is only one interface possible per meter.

Interfaces

The EMU Professional II possesses one of the following optional interfaces:

- M-Bus
- ModBus RTU
- TCP/IP mit Modbus TCP/IP
- LoRa



Note: A EMU Professional II only ever possesses one of these interfaces.

You can configure your EMU Professional II via different means. One such means is directly on the meter via the touch-sensitive buttons. If you use your EMU Professional II in conjunction with a EMU M-Bus Center you can configure the EMU Professional II via the web-user-interface of the EMU M-Bus Center.



Note: The meter must be connected via M-Bus to the EMU M-Bus Center for this.

M-Bus

The M-Bus interface is implemented according to EN 13757-2,-3 (formerly EN1434-3). Therefore the EMU Professional II M-Bus can communicate with all M-Bus capable devices. The M-Bus interface is integrated into the meter and protected from contamination and manipulation. The interface is located at the back of the meter on pin 1[3] (+) and pin 2[4] (-). Please consult the document “Manual EMU Professional II M-Bus”, DocRef 1480 for further information on the M-Bus interface of the EMU Professional II.

Settings ex Factory

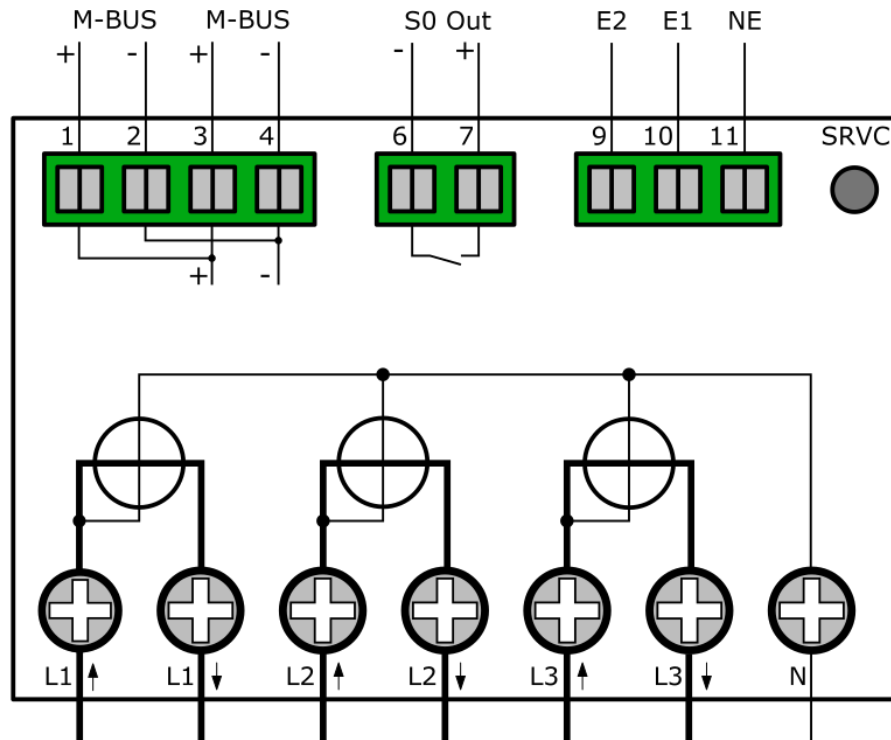
| Setting | Value |
|-------------------|-----------------------------|
| Secondary Address | Serial number of the device |
| Primary Address | 0 |
| Baud rate | 2400 |

Connection Diagram M-Bus

The EMU Professional II M-Bus possesses two internally connected M-Bus clamps. This facilitates an easier serial connection of multiple M-Bus devices while installing.



Note: The M-Bus interface is the same for the EMU Professional II 3/100 M-Bus and the EMU Professional 3/5 M-Bus.



Configuration of the Primary Address on the Device

- “Arrow right” to settings
- “Arrow down” to M-Bus Pri. Address
- Press “SRVC” button (<2 seconds)
- “Arrow right” chooses the digit, “Arrow down” increments the digit
- Save: Press “SRVC” button (>2 seconds) until the LCD flashes

Configuration of the Secondary Address on the Device

- “Arrow right” to settings
- “Arrow down” to M-Bus Sec. Address
- Press “SRVC” button (<2 seconds)
- “Arrow right” chooses the digit, “Arrow down” increments the digit
- Save: Press “SRVC” button (>2 seconds) until the LCD flashes

Configuration of the Baud Rate on the Device

- “Arrow right” to settings
- “Arrow down” to M-Bus Baud Rate
- Press “SRVC” button (<2 seconds)
- “Arrow right” chooses between 300, 600, 1’200, 2’400 (default), 4’800 and 9’600 Baud
- Save: Press “SRVC” button (>2 seconds) until the LCD flashes

Configuration via MB-Connect

The EMU Professional II M-Bus can also be configured over M-Bus with our own software MB-Connect.

For further information on the M-Bus Interface, as well as the software MB-Connect, please refer to the document “Manual Professional II M-Bus” Doc.-Ref: 1480.

S0 Pulse Output

The S0 Pulse Output follows the Norm EN 62053-31 (DIN 83864). Every EMU Professional II possesses a S0 Pulse Output and is therefore capable to communicate with any devices that can receive and interpret such pulses. The Interface is on the backside on pin 6 and pin 7. The internal switch is a highly robust Opto Power MOSFET 5–60VAC or VDC.

The S0 Pulse Output is potential free.

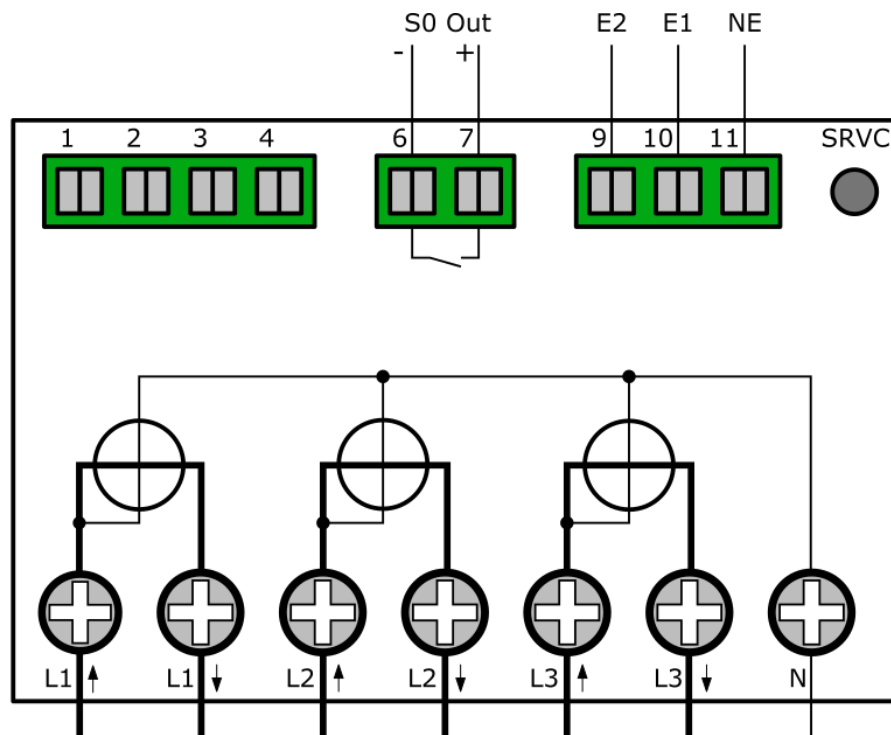


Note: Polarity is no issue.

Settings ex Factory

| | |
|-------------------|---|
| S0 Output | Active Energy Import (Pin 6 + 7) |
| Converter Counter | 10 Pulses per kWh/Kvarh @ 120ms Pulse Duration |
| Direct Meter | 1000 Pulses per kWh/Kvarh @ 40ms Pulse Duration |

Connection Diagram S0 Pulse Output



Configuration Type of Read-Out

- “Arrow right” to settings
- “Arrow down” to S0 Impulse Type
- Press “SRVC” button (<2 seconds)
- “Arrow right” chooses between:
 - Active Energy Diff; All active Energy, either import or export, is output without differentiating.
 - Reactive Energy Diff; All reactive Energy, either import or export, is output without differentiating.
 - Active Energy Import; Only active energy import is output. All other energies are ignored.
 - Reactive Energy Import; Only reactive energy import is output. All other energies are ignored.
 - Active Energy Export; Only active energy export is output. All other energies are ignored.
 - Reactive Energy Export; Only reactive energy export is output. All other energies are ignored.

- Save: Press “SRVC” button (>2 seconds) until the LCD flashes

Configuration of the Pulse Rate

- “Arrow right” to settings
- “Arrow down” to S0 Impulse Ratio
- Press “SRVC” button (<2 seconds)
- “Arrow right” chooses between 0.001, 0.01, 0.1, 1, 10, 100, 1000 and 10'000 pulses per kWh/ kvarh
- Save: Press “SRVC” button (>2 seconds) until the LCD flashes

Configuration of the Pulse Duration

- “Arrow right” to settings
- “Arrow down” to S0 Impulse Duration
- Press “SRVC” button (<2 seconds)
- “Arrow right” increases the duration by 2ms starting from 4ms up to 250ms
- Save: Press “SRVC” button (>2 seconds) until the LCD flashes

Data Available for Read-Out

The S0 Impulse output can be set to the following:

- Active Energy Diff; All active Energy, either import or export, is output without differentiating.
- Reactive Energy Diff; All reactive Energy, either import or export, is output without differentiating.
- Active Energy Import; Only active energy import is output. All other energies are ignored.
- Reactive Energy Import; Only reactive energy import is output. All other energies are ignored.
- Active Energy Export; Only active energy export is output. All other energies are ignored.
- Reactive Energy Export; Only reactive energy export is output. All other energies are ignored.

TPC/IP

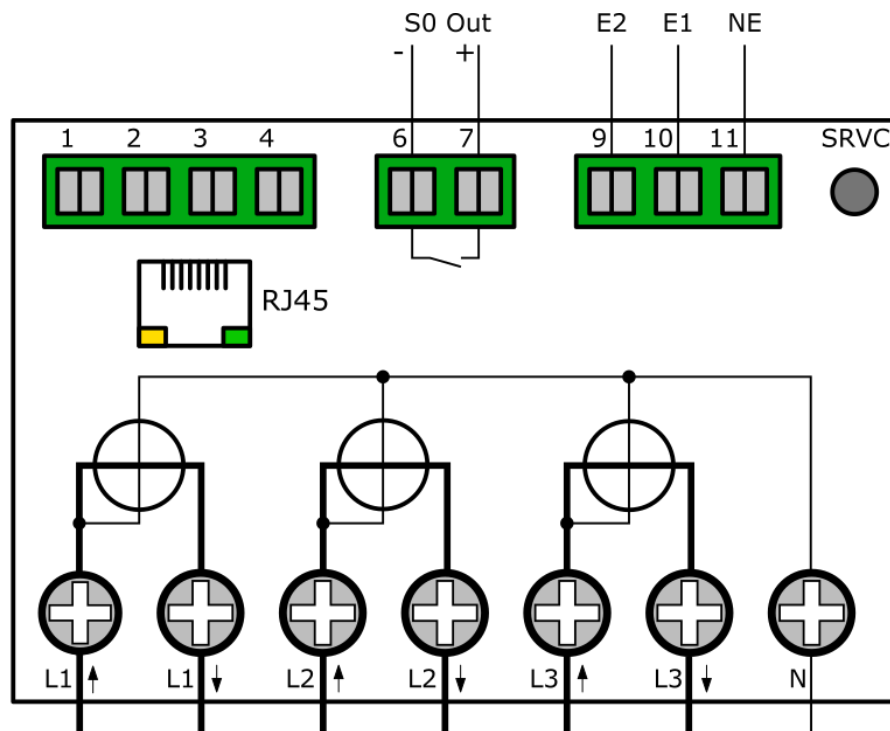
The EMU Professional II TCP/IP is equipped with a 10/100 MBit Ethernet-Interface and a RJ-45 connector. The energy meter automatically arranges the best speed with its remote station.

Settings Ex-Factory

Ex-Factory the EMU Professional II obtains its IP-address via a DHCP-request.

The assigned IP-address can be read out on the display of the meter under “Settings” -> “IP-Address”. Navigate to “Settings” by pressing the “Arrow right” button and then use the “Arrow down” button to reach “IP-Address”.

Connection Diagram TCP/IP



Configuration and Access

For further details on the EMU Professional II TCP/IP and its configuration please consult the document “Manual Professional II TCP/IP” Doc.-Ref. 1475

ModBus RTU, ModBus TPC/IP

The Professional II Modbus supports communication via Modbus TCP, Modbus RTU and Modbus ASCII.

For further details on the EMU Professional II Modbus and its configuration please consult the document “Manual Professional II Modbus” Doc.-Ref. 1485

LoRa

The EMU Professional II LoRa supports the communication via LoRa.

Ex Factory

The EMU Professional II LoRa sends the following values ex factory:

- Timestamp
- Active Energy Import Tariff 1&2
- Active Energy Export Tariff 1&2
- Error Code

Configuration and Access

For further details on the EMU Professional II Lora and its configuration please consult the document “Manual Professional II Modbus” Doc.-Ref. 1490

In Case of Errors

In case you encounter an error on the EMU Professional II please consult the following list of common errors.

Possible Errors after Installation

One or more phase currents show a negative sign: Check if the connections “S1↑” and “S2↓” (“Lx↑” and “Lx↓” for the direct meter) of the corresponding phase are connected correctly. “S1↑” (“Lx↑”) is **always** connected on the grid side, S2↓ (“Lx↓”) **always** on the user side.



DANGER: Make sure that all connected wires are voltage free before you check or change any connections. Touching any live elements is dangerous to life!

Wrong Meter Readings on the Converter Counter

The EMU Professional II displays a way higher consumption than possible: Please ensure that the current and voltage transformer ratios are set corresponding to the used transformers. The two ratios can be set on the EMU Professional II via the two buttons.

5/5 up to 20'000/5 A, in 5 A-steps. 1/1 up to 4'000/1 A, in 1 A-steps.

Behavior with Export and Import

The EMU Professional II records the energy flow in both negative (export) as well as positive (Import) direction in separate registers. The meter readings of import or export are **never** counted down or decreased. All registers are accumulating.

The register “Active Energy Import” adds up all the imported energy from external sources. For this energy the customer receives an invoice from the local utility company. The register “Active Energy Export” adds up all the exported energy from your own sources (e.g. photovoltaics). For this energy the customer receives payment from the local utility company.

Practical example:

Current consumption of your complex at 1 pm: Phase L1: 10kw Phase L2: 20kw Phase L3: 30kw Total ==> 60kw

Current export of your PV installation on this complex at 1 pm: Phase L1: 25kw Phase L2: 25kw Phase L3: 25kW Total ==> 75kW

In this case you produce more power than your complex needs right now. The register “Active Energy Import” stays the same while the register “Active Energy Export” is increasing as you are exporting your surplus energy.

The EMU Professional II Sends Wrong Information on the S0 Interface

Check if the pulse rate and pulse duration of the EMU Professional II correspond with the ones of your receiver. The pulse rate as well as pulse duration can be configured via the two buttons. Possible pulse rates / durations: Pulse rates: 1, 10, 100, 1000 and 10000 Impulse per kWh/kvarh. Pulse duration: 2ms, 10ms, 30ms, 40ms and 120ms.

The following values are set ex factory:

| | |
|-------------------|---|
| S0 Output | Active Energy Import (Pin 6 + 7) |
| Converter Counter | 10 Pulses per kWh/Kvarh @ 120ms pulse duration |
| Direct meter | 1000 Pulses per kWh/Kvarh @ 40ms pulse duration |

Tariff Change Does Not Work

Tariff 1 is set ex factory. Make sure the tariff inputs are connected correctly.

| E2 (Pin 9) | E1 (Pin 10) | Tariff |
|------------|-------------|--------|
| 0 | 0 | 1 |
| 0 | 1 | 2 |
| 1 | 0 | 3 |
| 1 | 1 | 4 |



DANGER: Make sure that all connected wires are voltage free before you check or change the tariff connections. Touching any live elements is dangerous to life!

The “L123” Display Constantly Blinks

The “L123” blinks every second, if the phase shift between L1/L2/L3 is not plus 120 degree. This error happens, when two or more phases are connected incorrectly. The phase sequence is displayed at the top middle of the LCD. Ensure that the individual phases are connected correctly.



DANGER: Make sure that all connected wires are voltage free before you check or change the phase connections. Touching any live elements is dangerous to life!

Error Codes

If an internal error occurs an error flag is set on the display. Such an error cannot be removed and the meter can no longer be read out. Should such an error occur please submit a support ticket at <https://www.emuag.ch/en/support-2/support-form/>. Please fill in the exact error code. All possible error codes are shown in the table below.

| Error code displayed | Description |
|----------------------|--------------------|
| F.F.0(00000000) | No Error, Meter OK |

Extended Information for Load Profile According to PTB-A 50.7

Measurement Correctness Note

Auflagen für den Verwender im Sinne des § 23 der Mess- und Eichverordnung

Die Mess- und Eichverordnung verpflichtet diejenigen, die im Sinne des Eichrechtes Verwender eines Messgerätes sind, so zu messen und Messgeräte so zu handhaben, dass die Richtigkeit der Messung gewährleistet ist. Verwender im Sinne des Eichrechtes unter Berücksichtigung der Regelung von Marktrollen durch das Messstellenbetriebsgesetz sind:

- Messgeräteverwender:
 - Messgeräteverwender sind die Messstellenbetreiber im Sinne des Messstellenbetriebsgesetzes.
- Messwertverwender:
 - Messwertverwender sind die, die im Sinne des Messstellenbetriebsgesetzes Messung und Messwertweitergabe an berechnete Dritte durchführen, sowie Abrechnung der Netznutzung und Energielieferung durchführen.

Die Messgeräteverwender trifft die Aufgabe, den Messwertverwendern die Möglichkeit zu verschaffen, sich über die nachfolgend erläuterten Auflagen in Kenntnis zu setzen.

Transparenz der Verwendung

Der Messwertverwender hat für die Stromkunden, bei denen die Geräte verwendet werden, das Zustandekommen der in Rechnung gestellten Arbeits- und ggf. Leistungswerte transparent zu machen. "Transparent machen" heißt, durch Information die Voraussetzungen für die Stromkunden schaffen, um unter Zuhilfenahme eichrechtkonformer Anzeigen der bei ihnen verwendeten Geräte das Zustandekommen der Rechnungsposten in der Stromrechnung nachvollziehen zu können. Insbesondere ist dabei auch darüber zu informieren,

- Welche der von den Geräten angezeigten Werte überhaupt für Verrechnungszwecke herangezogen werden dürfen,
- Dass nicht angezeigte Werte nicht für Verrechnungszwecke verwendbar sind und dass angezeigte Werte, die Ergebnisse von nicht eichrechtlich relevanten Funktionen sind, rein informativen Charakter haben und ebenfalls nicht für Verrechnungszwecke verwendet werden können. Die Messgeräte müssen im Übrigen so verwendet werden, dass die Ablesbarkeit der verrechnungsrelevanten Messergebnisse und der Fehlermeldungen auch für die Stromkunden gegeben ist.

Tarifierung

Für die eichrechtskonforme Verwendung der Zählerstandgänge können nur die Tarife T1 und T2 verwendet werden.

Dabei ist der § 33 MessEG zu beachten:

Diesbezüglich hat der Messwertverwender dafür zu sorgen, dass Rechnungen, soweit sie auf Messwerten beruhen, von demjenigen, für den die Rechnungen bestimmt sind, in einfacher Weise zur Überprüfung angegebener Messwerte nachvollzogen werden können und für diesen genannten Zweck falls erforderlich geeignete Hilfsmittel bereitzustellen. Es muss immer sichergestellt werden, dass alle Register welche zur Abrechnung verwendet werden auch am Display angezeigt werden.

Fehlermeldungen/Uhrzeitverstellungen

Fehlermeldungen:

In den Begleitdokumenten werden die Geräte-Funktionsfehler beschrieben, die die hier genannten Zähler selbst diagnostizieren und anzeigen können. Bei Auftreten eines oder mehrerer der als „Eichrechtlich relevante Fehlermeldungen“ bezeichneten Ereignisse ist die eichrechtskonforme Verwendung nicht mehr gewährleistet und die gespeicherten Messergebnisse sind als dubios anzusehen. Die Geräte müssen ausgebaut, nötigenfalls repariert und geeicht werden, wenn sie weiterhin für Verrechnungszwecke verwendet werden sollen.

Uhrzeitverstellung:

Bei Zählern mit über Fernsteuerung veränderbarer, interner Uhr muss durch technische Maßnahmen sichergestellt werden, dass am Zähler über eichrechtskonforme Anzeigen nachprüfbar ist, ob die Mess- und Abrechnungsrichtigkeit beeinflussende Verstellung der Uhr während eines Abrechnungszeitraumes erfolgt sind. Bei den hier genannten Zählern wird das wie folgt erreicht:

Ein Kommando zum Verstellen der Zähleruhr über eine der vorhandenen Schnittstellen führt immer zu einem Eintrag in das eichtechnische Logbuch. Die aktuelle Registrierperiode nach dem Zeitpunkt der Uhrverstellung wird ungültig markiert.

Die mit dem Uhrzeitverstellen neu begonnene Registrierperiode endet beim nächsten ganzzahligen Vielfachen der Registrierperiodenlänge (bei x Uhr 15, 30, 45 oder 00) basierend auf der neu eingestellten Zählerzeit.

Verwendung der Kommunikationsschnittstellen

Die Kommunikationsschnittstellen der Zähler sind nicht eichrechtskonform. Über sie ausgelesene Messwerte der hier zuzulassenden Zähler können nur insoweit für Verrechnungszwecke verwendet werden, wie es sich gemäß Anlage 2, Abschnitt 8.1 der Mess- und Eichverordnung um eine unveränderte Wiederholung der im Display der hier zuzulassenden Zähler angezeigten Messergebnisse handelt.

Zeitsynchronisierung

Die hier genannten Zähler synchronisieren sich über die vorhandene Kommunikationsschnittstelle. Für eine eichrechtskonforme Verwendung der Zählerstandgänge muss der Verwender sicherstellen, dass die Uhrzeit des Zählers auf die gesetzliche Zeit synchronisiert wird. Bei den hier zuzulassenden Zählern müssen folgende Voraussetzungen erfüllt sein, bevor das Datentelegramm mit Datum und Uhrzeit gesendet wird:

- Der M-Bus muss zur Kommunikation frei sein
- Die Sekunden der aktuellen Uhrzeit müssen bei 00 sein (das Telegramm darf nur zur vollen Minute übertragen werden)
- Als Zeitquelle muss die gesetzliche Zeit verwendet werden

Können die Voraussetzungen nicht erfüllt werden, dürfen die Zählerstandgänge nicht für abrechnungsrelevante Zwecke verwendet werden.

Messergebnisse, die nicht für Verrechnungszwecke verwendet werden dürfen

Messwerte anderer als der in der Baumusterprüfbescheinigung genannten Messgrößen dürfen nicht für Verrechnungszwecke verwendet werden.

Logbuchfunktion

Die hier genannten Zähler verfügen immer über ein eichtechnisches Logbuch, das nur unter Verletzung einer herstellerseitigen Zugriffssicherung gelöscht werden kann.

EMU Professional II

The following chapter describes the menu items relevant to the load profile in greater detail. The load profile of the EMU Professional II is certified for PTB-A 50.7.

CT Ratio and VT Ratio

These ratios set the applied factor while measuring the energy and must be set according to the used current and/or voltage transformers. The adjustment of these ratios is only possible using the SRVC button. The SRVC button can be sealed with a lead seal.

Real Time Clock

The real time clock (RTC) displays the currently valid time of the device. We recommend setting the RTC to UTC as the meter does not support timezones and daylight-saving time. The adjustment of the real time clock is only possible using the SRVC button. The SRVC button can be sealed with a lead seal.

S0 Impulse Output

The S0 Impulse output can be set to the following:

- Active Energy Diff; All active Energy, either import or export, is output without differentiating.
- Reactive Energy Diff; All reactive Energy, either import or export, is output without differentiating.
- Active Energy Import; Only active energy import is output. All other energies are ignored.
- Reactive Energy Import; Only reactive energy import is output. All other energies are ignored.
- Active Energy Export; Only active energy export is output. All other energies are ignored.
- Reactive Energy Export; Only reactive energy export is output. All other energies are ignored.

The interface outputs an electrical pulse per set energy unit. The interface can be configured as follows:

- Impulse ratio: Set the amount of pulses per unit of energy measured.
- Impulse length: Set the length of the pulse.

Use for Billing Purposes

The LP version of the EMU Professional II is only certified for billing purposes of active energy measurements. These measurements can be accessed at any time over the display or the meter's interface

All other measurements are purely of an informative nature and may not be used for billing purposes. All measurements not shown on the display but retrievable over an interface are of a purely informative nature as well and may not be used for billing purposes.

Description

The load profile functionality according to PTB-A 50.7 consists of 2 separate functionalities:

- The load profile storage for the recording of measurements.

This storage space is a ring buffer. After reaching the maximum possible entries, the oldest 27 entries are deleted and overwritten. This overwriting happens in batches of 27 entries due to technical factors.

- The logbook storage (official calibration certified logbook) for the recording of changed made to the parameters relevant for the load profile. The logbook cannot be tampered with without destroying the adhesive seal labels. The changes that are recorded are the following:
 - Adjustment of time and date
 - An adjustment of time and date is defined as follows: The difference between old and new time is more than 9 seconds. If the difference is smaller than 9 seconds, the adjustment is interpreted as automatic time synchronization and will therefore not be recorded.
 - Adjustment of voltage of current transformation ratio.
 - Adjustment of S0 impulse ratio, S0 impulse duration

Each of the values mentioned above can only be adjusted once in every measurement interval. The next change can only be made in the next interval.

Internal memory only suffices for 2048 logbook entries. These entries can neither be deleted nor overwritten. Once this logbook memory is depleted the meter goes into the “not certified” status if one of the parameters mentioned above is changed again.

Once this status is set, a “PTB NV” message is shown on the display. All measured load profiles after this setting are marked as “NV” (Not valid).



Note: This “NV”-Status of the meter cannot be reversed in any way due to legal restrictions.

Interval of Recording

The interval for recording load profiles is fixed at every 15 minutes and cannot be changed.

Time Synchronization

Synchronizing of the time may be done over a predefined command over the M-Bus/TCP-IP interface. The data sent includes time and date. The synchronization is immediate and is acknowledged by the meter with a “ACK” message. The time can be synchronized or set only once every measurement interval (15min). The time set must be the legal time.

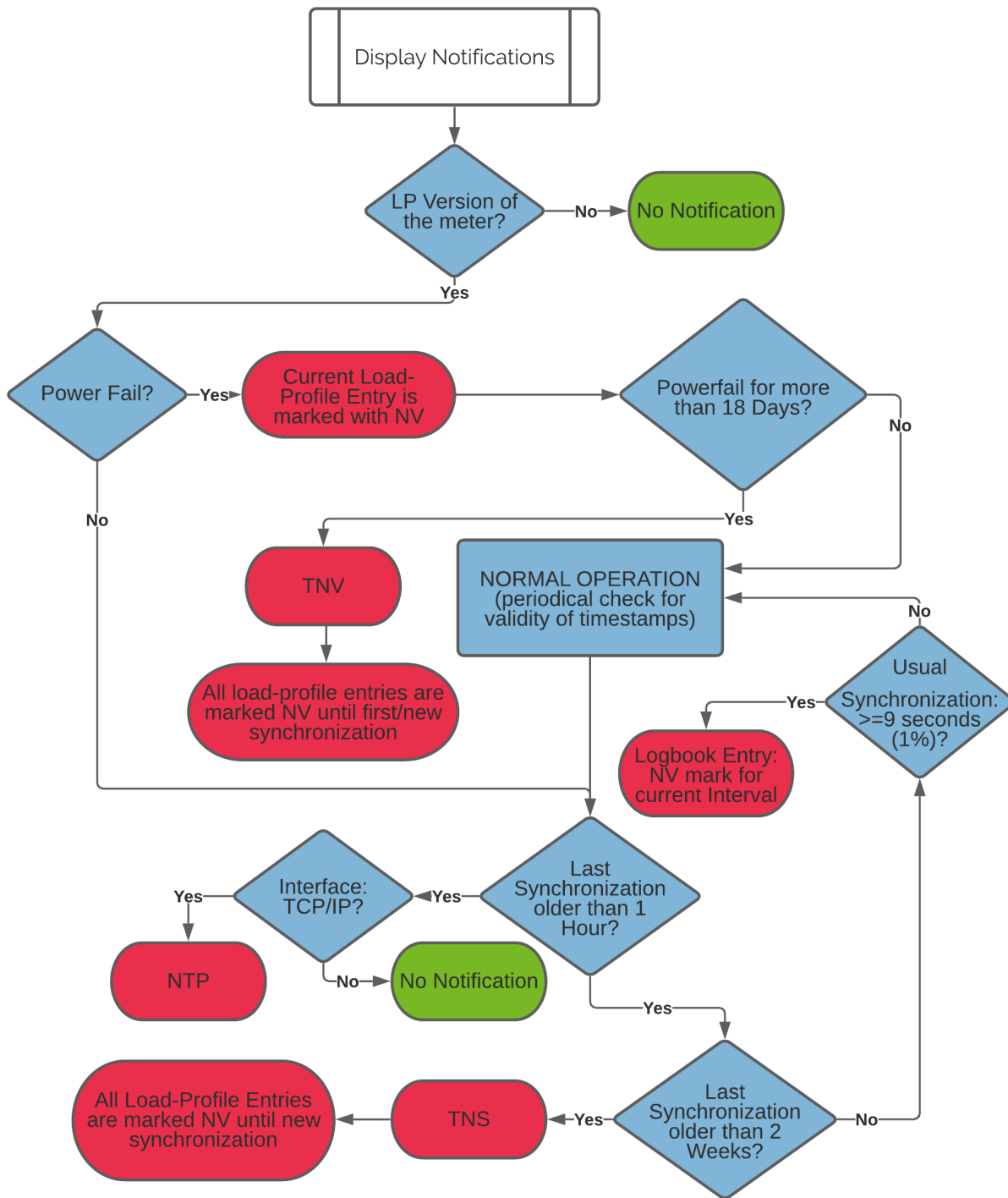
An internal buffer supplies the RTC for at least 18 days (The meter needs to be powered for at least 2 hours to charge this buffer). The EMU Professional II LP differentiates between the following two time adjustments:

- Synchronization: If the difference between old and new time is less than 9 seconds (1% of load profile interval) the meter sets the new time without generating a logbook entry.
- Time set: If the difference is more than 9 seconds the time change will not count as a regular synchronization and will generate a logbook entry.



Note: The EMU Professional II operates with internal timestamps therefore it knows if more than 2 weeks have passed since the last synchronization even if it is powered down for more than 2 weeks (but less than 18 days).

The notifications TNV, TNS or NTP can appear on the display. The following diagram explains when and why they appear and the consequences:



Note: According to the PTB-A 50.7 Certificate the time must be synchronized at least once every 2 weeks. If no synchronization occurs within these 2 weeks all load profiles after these 2 weeks are marked as "NV" until the next synchronization occurs. The message "TNS" is displayed.



Note: Ex Factory the internal buffer for the RTC is not charged.

Tariff Changes

A change of tariff on the LP version is set at the beginning of the next interval. A tariff is therefore always set for at least one interval period. For the LP version only the two-rate tariff is available.



Note: It is possible for a wrong tariff to be displayed after a power failure. The first load profile is set as “NV” regardless and the correct tariff is set correctly at the start of the next interval according to the tariff inputs NE, E1 and E2.



Note: For load profile measurements according to PTB-A 50.7 the two-rate tariff is mandatory. Tariff changes are set at the start of the next regular interval.

External Read-out over Interfaces

Read-out over external interfaces can be used for billing purposes. The interfaces send the same information as is shown on the display.

Memory Capacity

The internal memory capacity can store:

- Continual entries for the load profile: 105378
 - With a save interval of 15 minutes this memory capacity can store load profiles reaching back approx. 3 years. Once the last entry is stored the memory handler deletes the first 27 entries and jumps back to the first entry. Once all 27 entries are filled again, the next 27 entries are deleted. This means only the newest 105351 load profile entries are available and older ones are deleted.
- Logbook entries: 2048
 - Each adjustment of the current or voltage ratio, the real time clock or the S0 interface results in an entry into the logbook. Once all 2048 entries are used the meter sets all load profiles after the next change to one of the above factors to “NV” according to PTB-A 50.7. A meter in this status must be replaced.

Power Failure and Reboot

Power Failure

All load profiles are saved and stored in a fixed 15-minute interval e.g. XX:00, XX:15, XX:30 and XX:45. After a power failure, the normal interval continues.

An Example:

- Current time: 07:37 => last load profile entry was at 07:30
- Power failure until 08:12
- Next entry happens on schedule at 08:15 (This entry is marked “NV” automatically)
- The entries for 07:45 and 08:00 are missing.

After every power failure the first load profile is marked as “NV”. In case the internal buffer for the RTC sustained the meter through the power failure all further entries are **not** marked “NV”.

Reboot

In some instances an internal meter reboot may occur. In these cases the corresponding load profile entry is marked with “NV”.

Display Load Profile



The load profile menu always shows the latest entry on call up. Once all 110'457 entries are full, the EMU Professional II automatically deletes the oldest entry. The numeration of the load profiles however does not jump back to 0 but continues as if nothing happened.

Example: Your EMU Professional has already saved 200'000 load profiles. If you go through the list of load profiles you will start with load profile nr. 200'000. If you go back 105'378 entries you will jump back to load profile nr. 200'000. The data for load profile nr. 1-94'622 has been overwritten.

The following information is shown on the display:

000006: Index of the shown entry. The first entry has index 1 and the button "Arrow Down" lets you go through all stored load profiles (chronologically descending).

01.01.2021 01:30:55: Time stamp of the entry. Current time and date. This is the time the device had on the internal clock at the time of saving. There is no internal differentiation of timezones. The time is always in UTC.

NV: Validity flag. The following situations result in a load profile being marked with "NV":

- If any of the above mentioned device parameters are adjusted, the load profile of that time interval is marked with "NV"
- The first entry after the startup of the meter is always marked as "NV". This is due to the assumption that the startup happens because of a prior power fail.
- If a time synchronization does not happen within 2 weeks of the last one, all entries after these 2 weeks are marked "NV".

Valid entries do not have any markings.

T1/T2 00000000.0 kWh: Meter reading per tariff. Value of the active energy register at the time of the entry.



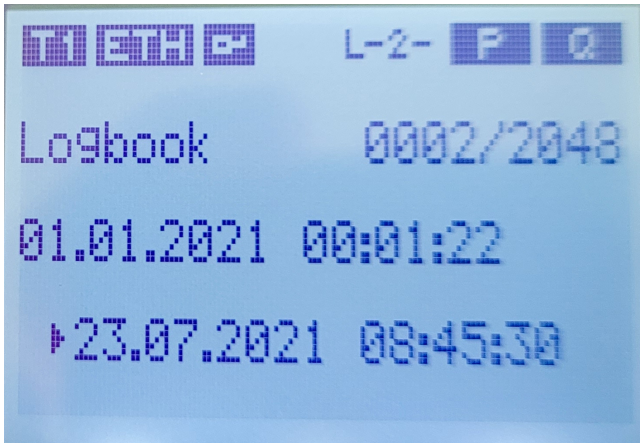
Note: For load profiles according to PTB-A 50.7 only a two-rate tariff is available. Tariff changes are set at the start of the next interval.

Imp/Exp: Change between import and export register. A long (>1s) press on the "Arrow Down" button lets you change between import and export data.

Display Logbook

The logbook always shows the latest entry on call up. The following information are shown on the display:

In Case of a Time Adjustment



001/070: Index of the current entry. The entries start with 1 and can be browsed by pushing the “Arrow Down” button (chronologically descending).

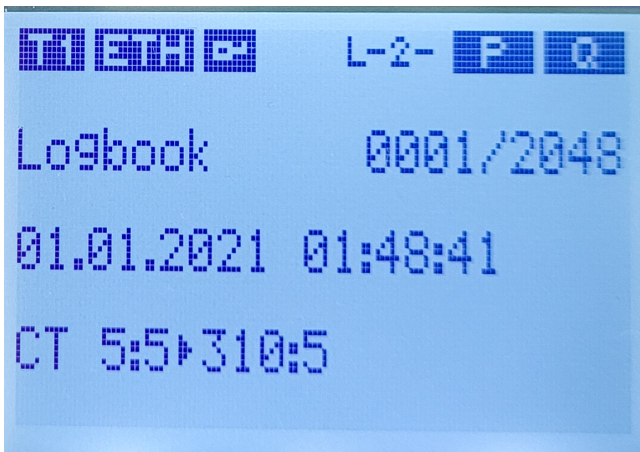
01.01.2000 00:06:37: Valid time up until now. This also corresponds to the time of adjustment.

05.01.2021 10:40:00: Newly set time.

A short press (<1s) on the “Arrow Down” button lets you browse the saved logbook entries. The entries always start with the latest entry.

A longer press (>1s) of the “Arrow Down” button lets you see the meter readings at the time of adjustment (Import and Export).

In Case of a Ratio Adjustment



003/070: Index of the current entry. The entries start with 1 and can be browsed by pushing the “Arrow Down” button (chronologically descending).

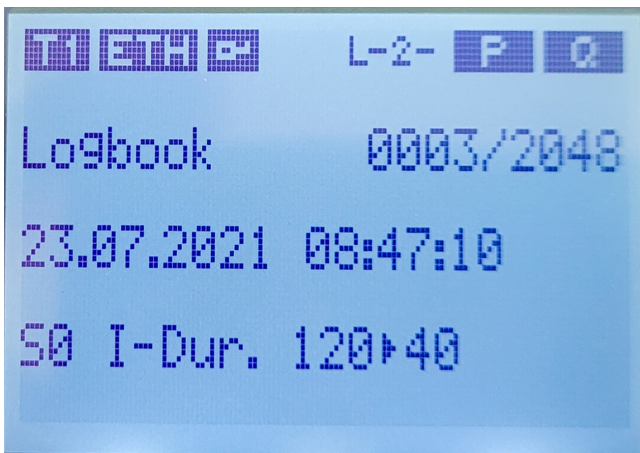
05.01.2021 11:35:24: Time of the adjustment.

VT 5:5 -> 150:5: Old factor and new factor.

A short press (<1s) on the “Arrow Down” button lets you browse the saved logbook entries. The entries always start with the latest entry.

A longer press (>1s) of the “Arrow Down” button lets you see the meter readings at the time of adjustment (Import and Export).

In Case of a Impulse Duration Adjustment



002/070: Index of the current entry. The entries start with 1 and can be browsed by pushing the “Arrow Down” button (chronologically descending).

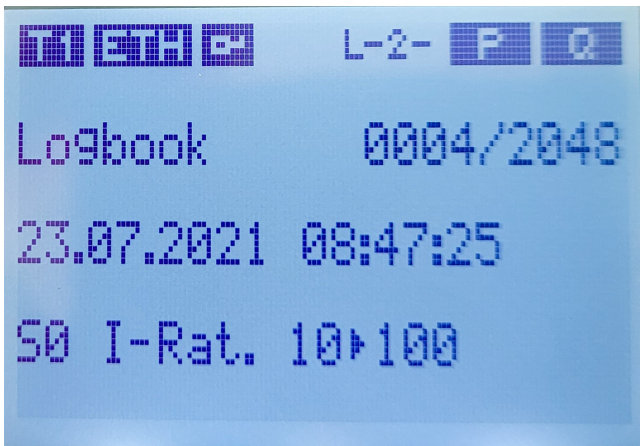
05.01.2021 11:35:24: Time of the adjustment.

S0 I-Dur. 2 -> 10: Old factor and new duration in ms.

A short press (<1s) on the “Arrow Down” button lets you browse the saved logbook entries. The entries always start with the latest entry.

A longer press (>1s) of the “Arrow Down” button lets you see the meter readings at the time of adjustment (Import and Export).

In Case of a Impulse Rate Adjustment



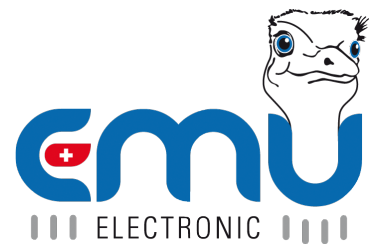
006/070: Index of the current entry. The entries start with 1 and can be browsed by pushing the “Arrow Down” button (chronologically descending).

05.01.2021 11:35:24: Time of the adjustment.

S0 I-Rat. 10000 -> 10: Old ratio and new ratio in Imp/kWh

A short press (<1s) on the “Arrow Down” button lets you browse the saved logbook entries. The entries always start with the latest entry.

A longer press (>1s) of the “Arrow Down” button lets you see the meter readings at the time of adjustment (Import and Export).



EMU Electronic AG

Jöchlerweg 2
CH-6340 Baar
Switzerland

Phone: +41 (0)41 545 03 00

helpdesk@emuag.ch
www.emuag.ch