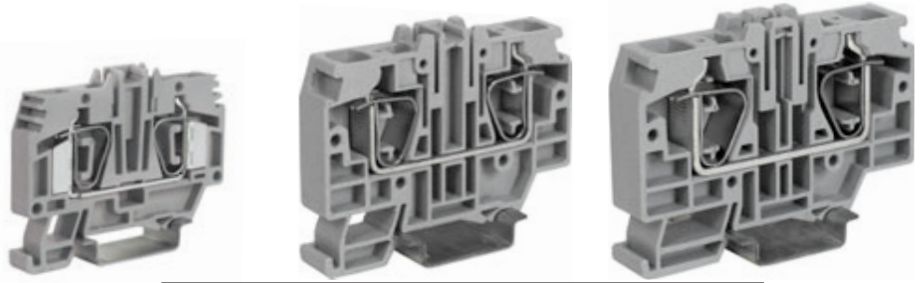


# HMM Series

with polyamide insulating body

- UL94V-0
- mounting onto PR/3 type rails according to IEC 60715 Std., "TH/35" type
- available in standard (grey RAL 7042 colour) or (Ex)i "intrinsic safety" circuits (blue RAL 5015 colour) version



PTC jumper configurations					
SINGLE OR PARALLEL EXTENDING	POLE SKIPPING	ADJACENT WITHOUT BARRIER	ADJACENT WITH BARRIER	STAGGERED MODE	PARALLEL SKIPPING

The /GR tag indicates the grey colour version.

Morsetto	Ponte	Insulation voltage in the above configurations (V) acc. to IEC 60947-7-1					
HMM.6	PTC/8	500	500		500	500	500
HMM.10 (HMM.16)	PTC/11 (/16)	1000	1000		800	1000	800

grey version	HMM.6/GR	HMM.10/GR	HMM.16/GR
	Cat. No. <b>HM320GR</b>	Cat. No. <b>HM330GR</b>	Cat. No. <b>HM340GR</b>
(Ex)i version	HMM.6 (Ex)i	HMM.10 (Ex)i	HMM.16 (Ex)i
	Cat. No. <b>HI320</b>	Cat. No. <b>HI330</b>	Cat. No. <b>HI340</b>
TECHNICAL CHARACTERISTICS			
function / type	feed-through	feed-through	feed-through
rated cross-section (mm <sup>2</sup> )	6	10	16
connecting capacity			
flexible (mm <sup>2</sup> )	0,2 ÷ 10	1,5 ÷ 16	1,5 ÷ 25
rigid (mm <sup>2</sup> )	0,2 ÷ 10	1,5 ÷ 16	1,5 ÷ 25
max. flexible with ferrule (mm <sup>2</sup> )-ferrule type	6 - WP60/20	10 - WP100/21	16 - WP160/22
rated voltage / rated current / gauge conf. to IEC 60947-7-1	800 V / 41 A / A5	1000 V / 57 A / A6	1000 V / 76 A / A7
rated impulse withstand voltage / pollution degree	600 V / 41 A / 24-8 AWG	-	-
insulation stripping length (mm)	8 KV / 3	12 KV / 3	12 KV / 3
height / width / thickness	18	18	18
height / width / thickness	44 / 62 / 8,2	53 / 71 / 10	56 / 80 / 12
height / width / thickness	52 / 62 / 8,2	61 / 70 / 10	64 / 80 / 12
height / width / thickness	-	-	-

## APPROVALS



ACCESSORIES	Type	Cat. No.	Type	Cat. No.	Type	Cat. No.
End sections	HMT.6/PT/GR	HM321GR	HMT.10/PT/GR	HM331GR	HMT.16/PT/GR	HM341GR
	HMT.6/PT (Ex)i	HI321	HMT.10/PT (Ex)i	HI331	HMT.16/PT (Ex)i	HI341
Permanent cross connection (intrinsically IPXXB protected once mounted)	PTC/8/02 poles	PTC0802	PTC/11/02 poles	PTC1102	PTC/16/02 poles	PTC1602
	PTC/8/03 poles	PTC0803	PTC/11/03 poles	PTC1103	PTC/16/03 poles	PTC1603
	PTC/8/05 poles	PTC0805	PTC/11/05 poles	PTC1105	PTC/16/05 poles	PTC1605
	PTC/8/10 poles	PTC0810	PTC/11/10 poles	PTC1110	PTC/16/10 poles	PTC1610
	PTC/8/00 (30 poles)	PTC0800	PTC/11/00 (25 poles)	PTC1100	PTC/16/00 (20 poles)	PTC1600
Rated current carrying capacity of jumper (A)	<b>41</b>		<b>57</b>		<b>76</b>	
Cross-connection identification strip (100 mm)	PTC/SP	PTC0990	-		-	
Multiple common bar	-		-		-	
Shunting screw and sleeve	-		-		-	
Coloured partition	DFH/1	DH01..	DFH/4	DH04..	DFH/4	DH04..
Cross connection barrier	-		-		-	
Test plug socket	-		-		-	
Test plug	SDD/1	DD001	SDD/1	DD001	SDD/1	DD001
Modular test plug	-		-		-	
End section for modular test plug	-		-		-	
Numbering strip	CNU/8/51	NU0851	SNZ/10	SN..	-	
Screwdriver for the activation of the spring	CCH/2,5-4	CCH02	CCH/4	CCH02	CCH/4	CCH02
Warning plate	-		-		-	
Marking tag	CNU/8/51	NU0851	CNU/8/51	NU0851	CNU/8/51	NU0851
End bracket	BTU for PR/DIN and PR/3	BT005	BTU for PR/DIN and PR/3	BT005	BTU for PR/DIN and PR/3	BT005
	BTO	BT007	BTO	BT007	BTO	BT007
	BT/3 for PR/3 only	BT003	BT/3 for PR/3 only	BT003	BT/3 for PR/3 only	BT003
Mounting rail according to IEC 60715 Std.	-		-		-	
	PR/3/AC of steel	PR003	PR/3/AC of steel	PR003	PR/3/AC of steel	PR003
	PR/3/AS same with slots	PR005	PR/3/AS same with slots	PR005	PR/3/AS same with slots	PR005